

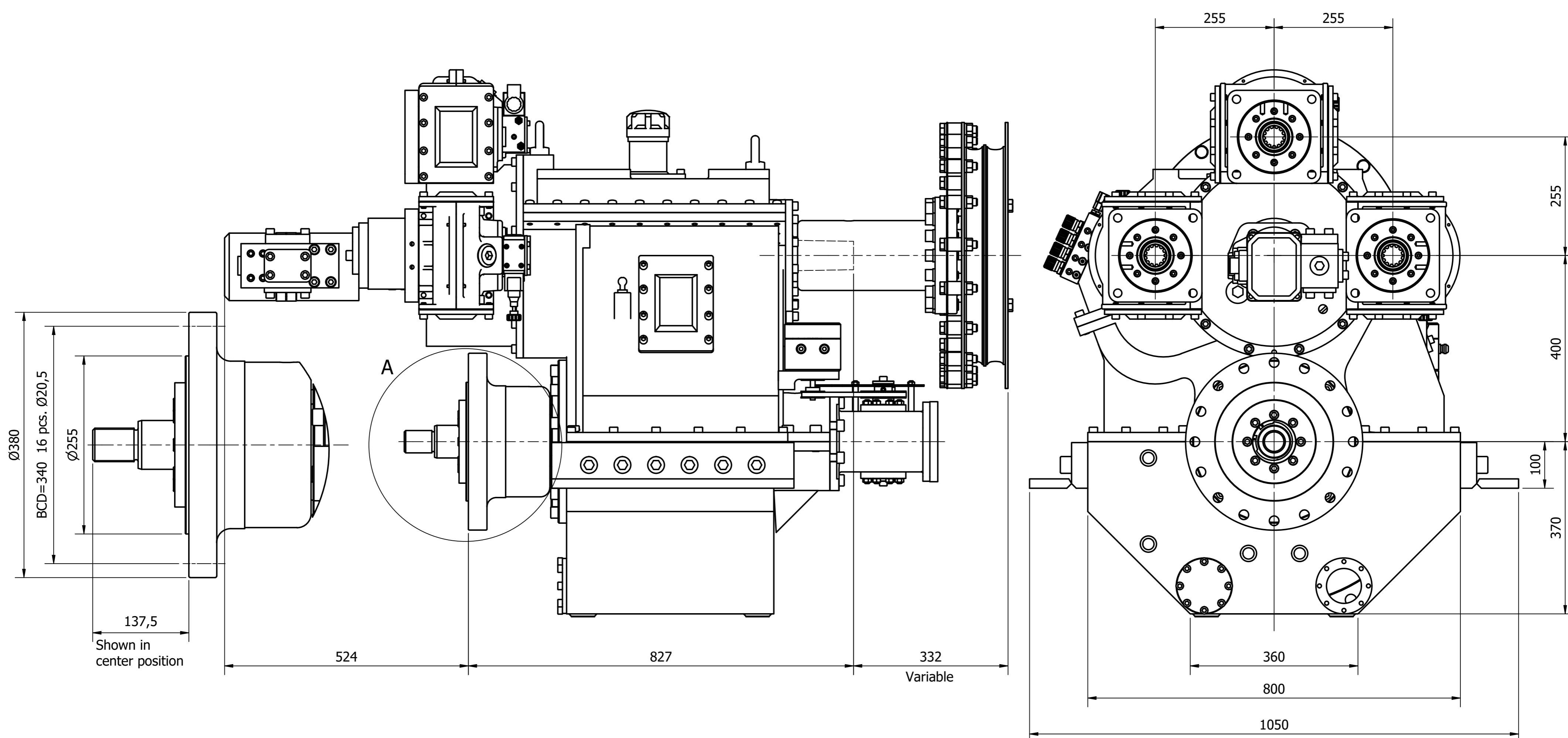
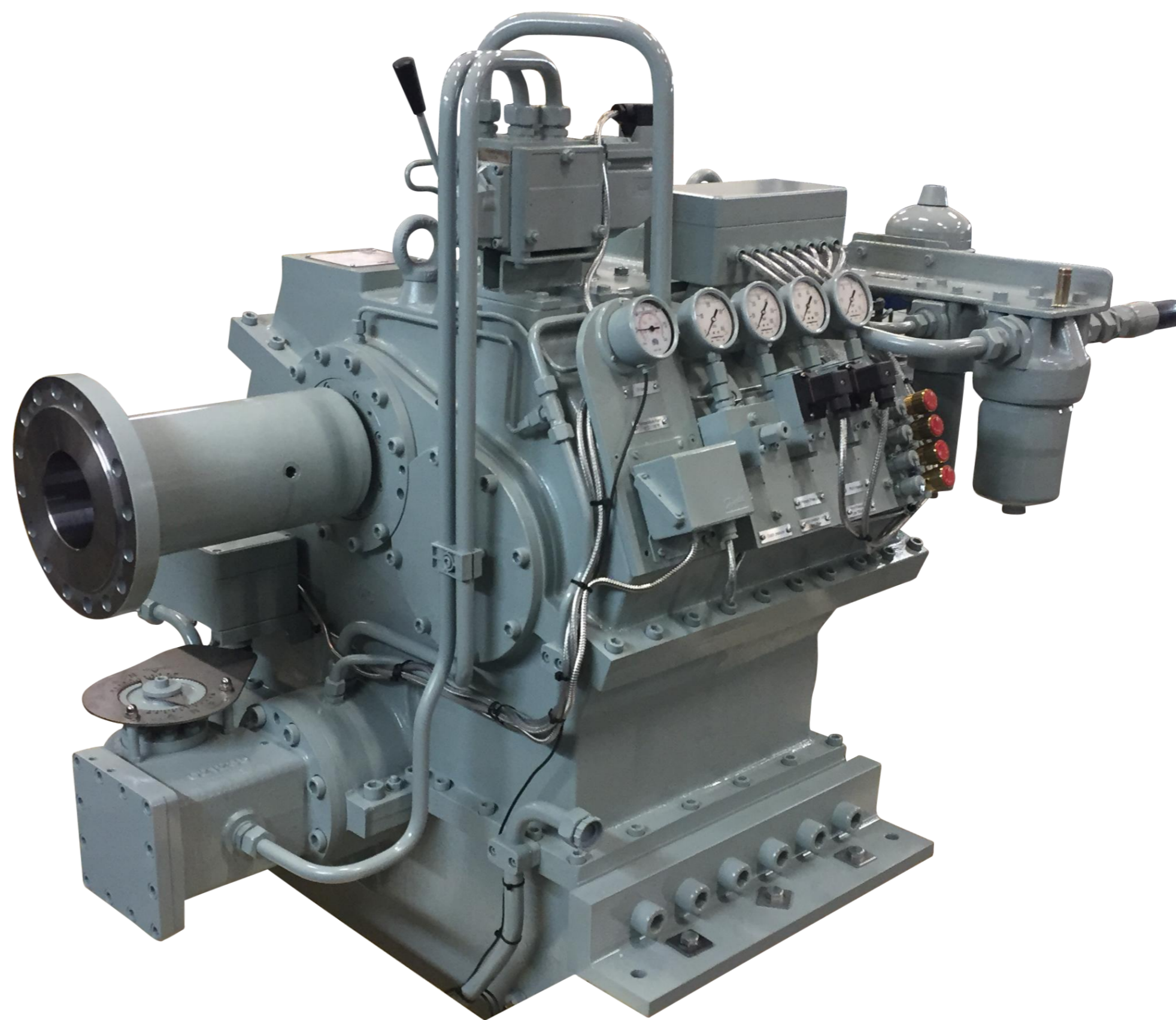
DATA SHEET

MARINEGEAR CPGD50

With safety according to class

Gear ratios	Torque [Nm]	J-Factor [kW/rpm]	J-Factor [HP/rpm]
7,28 : 1	3600	0,38	0,51
8,04 : 1	3390	0,35	0,48
8,75 : 1	3420	0,36	0,49
9,38 : 1	3070	0,32	0,44
10,86 : 1	2760	0,29	0,39
11,68 : 1	2560	0,27	0,36
12,38 : 1	2380	0,25	0,34

OTHER RATIOS AVAILABLE ON REQUEST



Servo for propeller:

- Max. force: 28,9t
- Max. stroke 145mm
- Suitable for feathering propeller

Options:

- Semi flexible foundation
- Semi flexible output coupling

PTO standard specifications:

- Max. 3 PTO's - each with hydraulic clutch or as live PTO.
- Max. torque f. 1 PTO: 1300Nm
- Max. total torque: 2600Nm
- Rpm speed-up ratio: 1,22:1
- SAE-C / SAE-D / SAE-E flange
- other PTO & flanges available on request

Weight (Approx.):

- Weight without PTO: 1540kg
- Weight with 3 PTO's: 1620kg

Direction of rotation:

- Double step gearbox
- Standard left in / left out



1-048-032187-0

HUNDESTED PROPPELLER A/s

E-mail: sales@hundested.com