

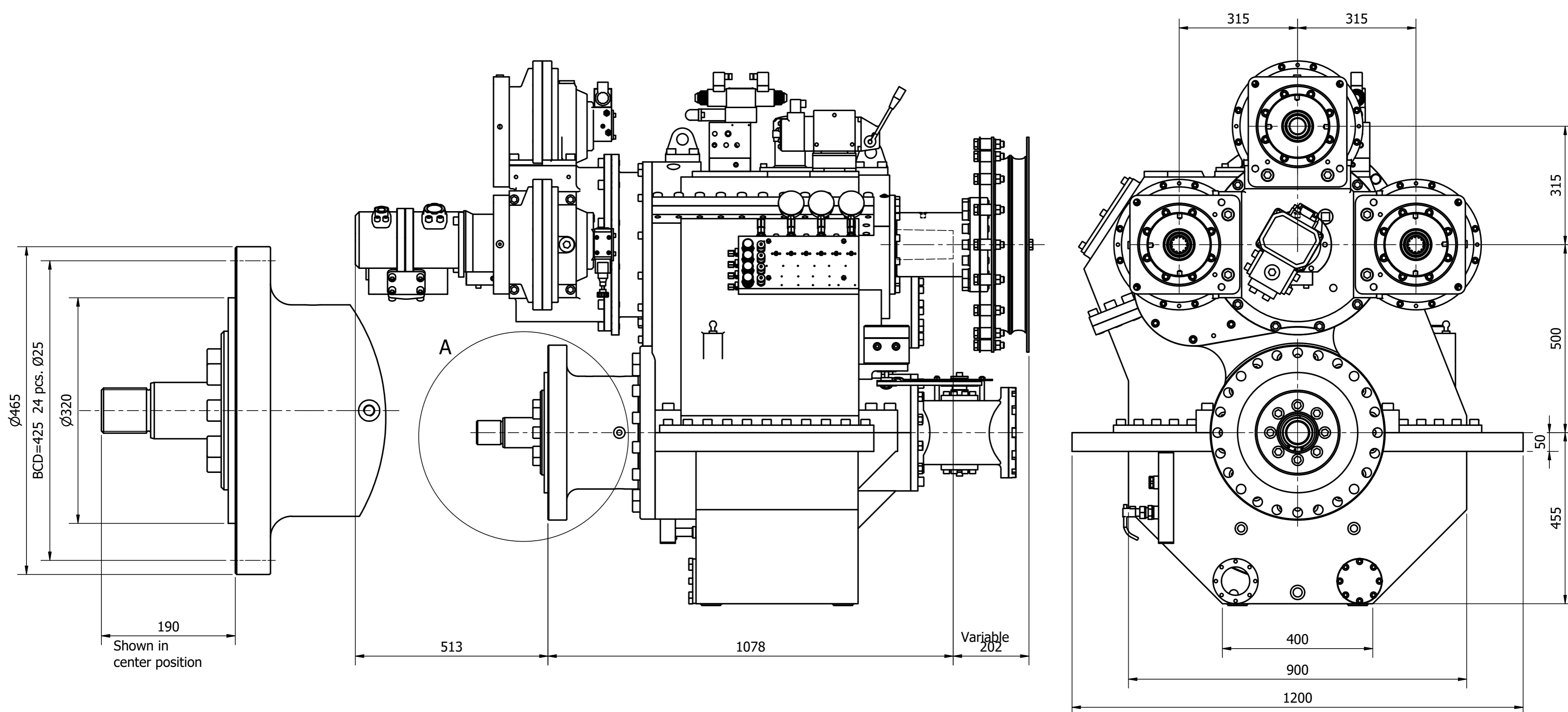
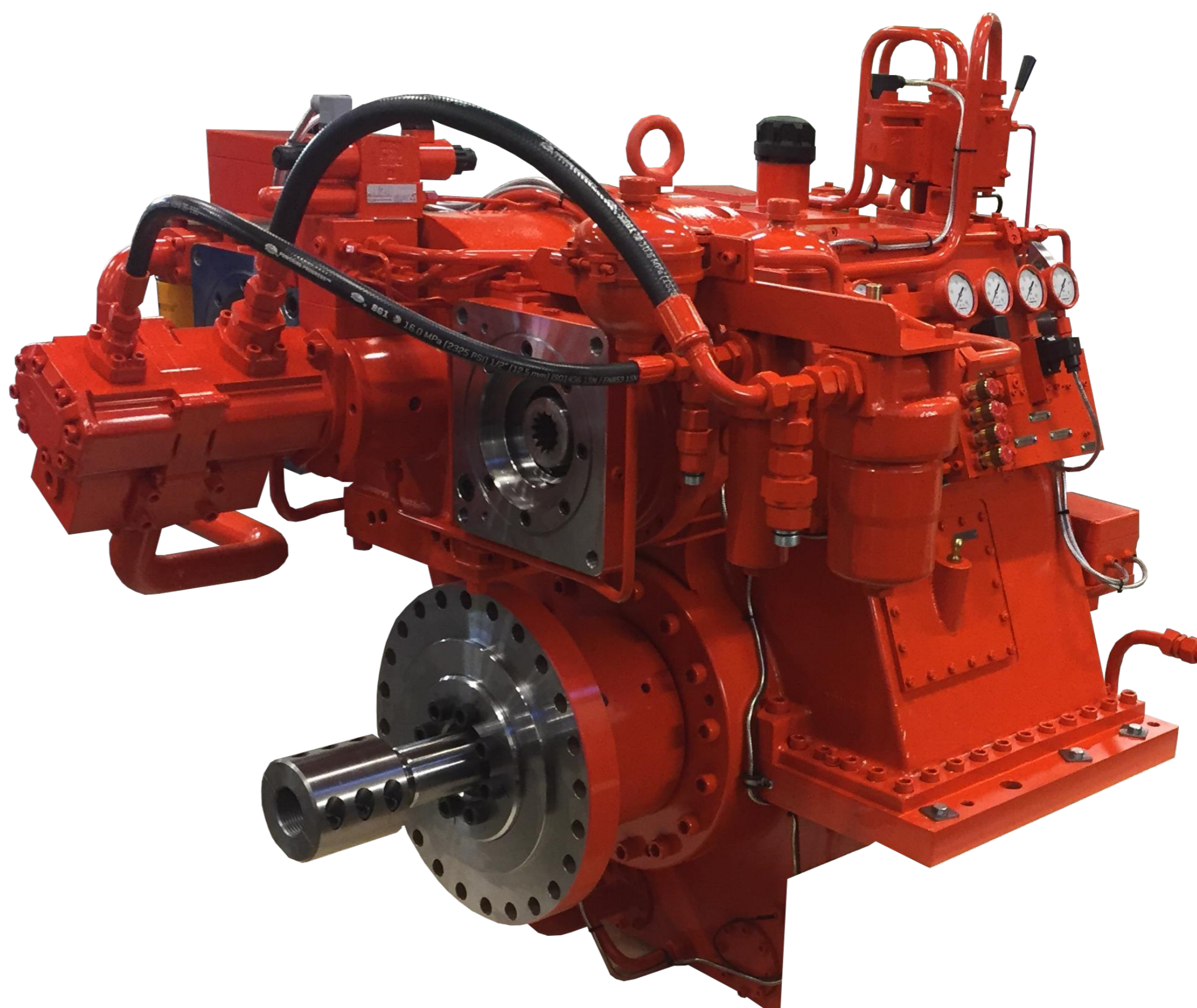
DATA SHEET

MARINEGEAR CPGD120

With safety according to class

Gear ratios	Torque [Nm]	J-Factor [kW/rpm]	J-Factor [HP/rpm]
5,93 : 1	9780	1,02	1,39
7,04 : 1	9780	1,02	1,39
8,99 : 1	8340	0,87	1,19
9,58 : 1	7820	0,82	1,11
10,07 : 1	7440	0,78	1,06
10,60 : 1	6790	0,71	0,97
11,93 : 1	6100	0,64	0,87
13,99 : 1	5360	0,56	0,76
15,67 : 1	3440	0,36	0,49

OTHER RATIOS AVAILABLE ON REQUEST



Servo for propeller:

- Max. force: 45,6t
- Max. stroke 160mm
- Suitable for feathering propeller

Options:

- Semi flexible foundation
- Semi flexible output coupling

PTO standard specifications:

- Max. 3 PTO's - each with hydraulic clutch or as live PTO.
- Max. torque f. 1 PTO: 2000Nm
- Max. total torque: 4000Nm
- Rpm speed-up ratio: 1,69:1
- SAE-C / SAE-D / SAE-E flange
- other PTO & flanges available on request

Weight (Approx.):

- Weight without PTO: 3080kg
- Weight with 3 PTO's: 3250kg

Direction of rotation:

- Double step gearbox
- Standard left in / left out



1-048-032186-0

HUNDESTED PROPELLER A/s

E-mail: sales@hundested.com