

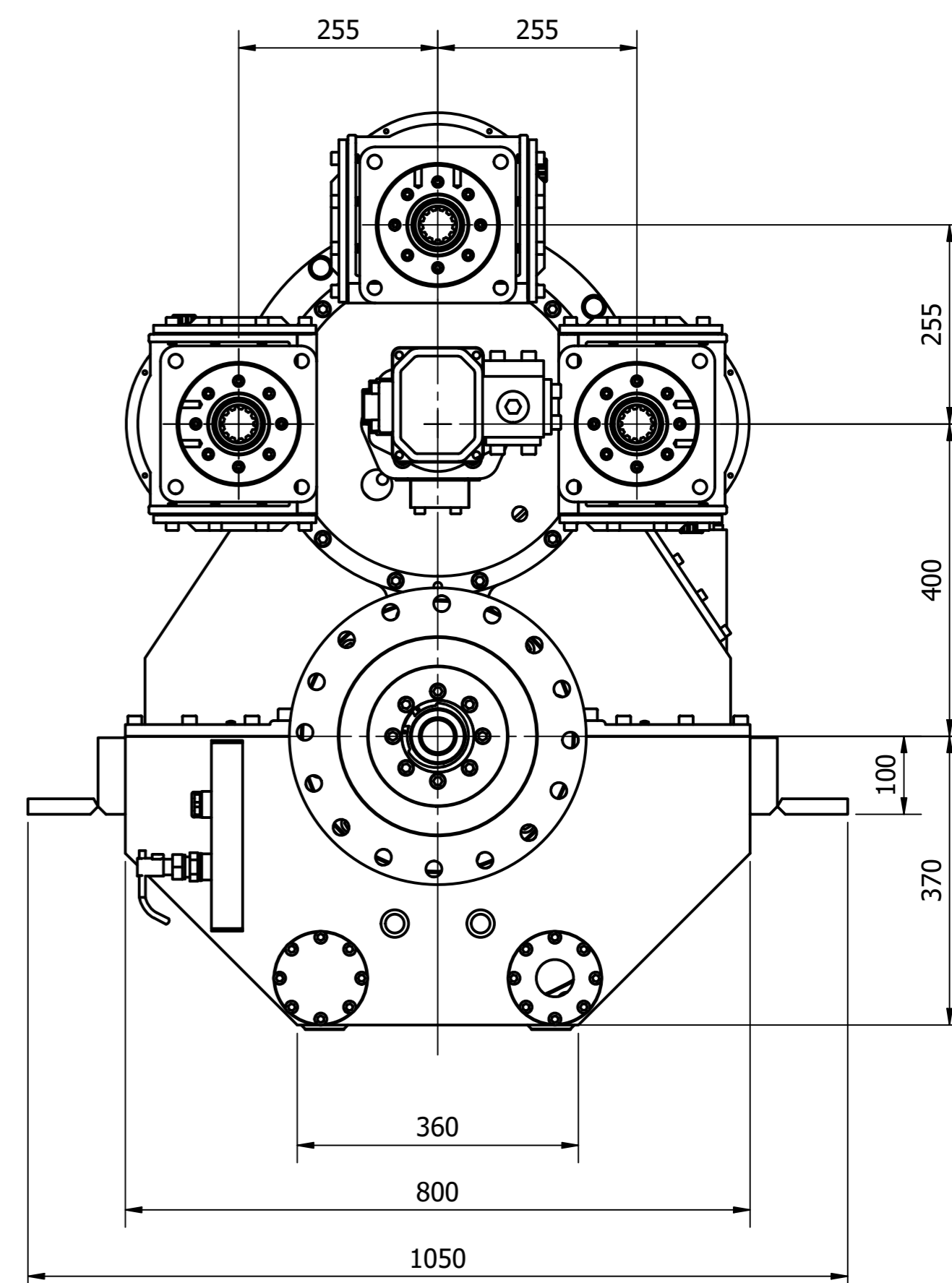
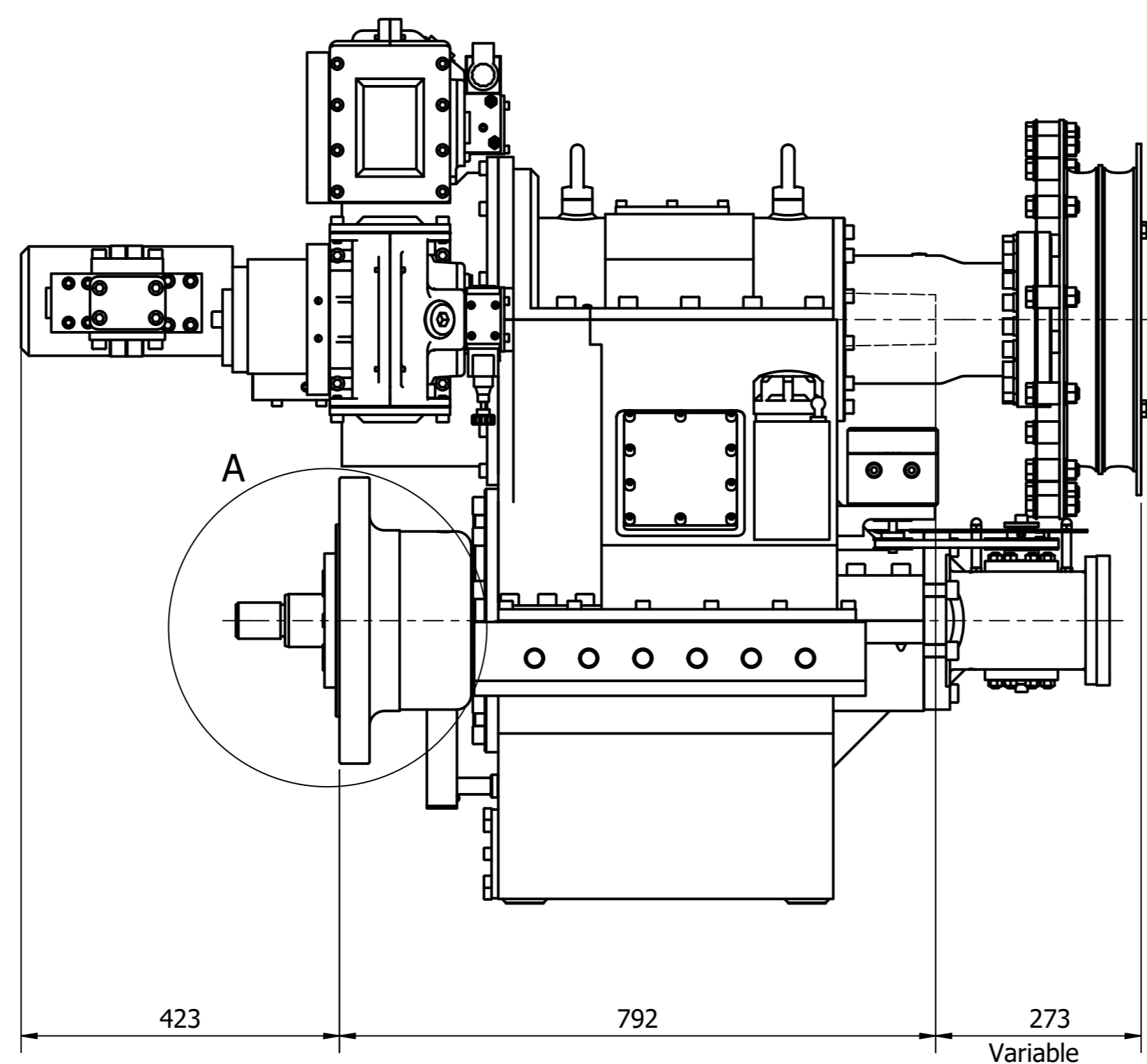
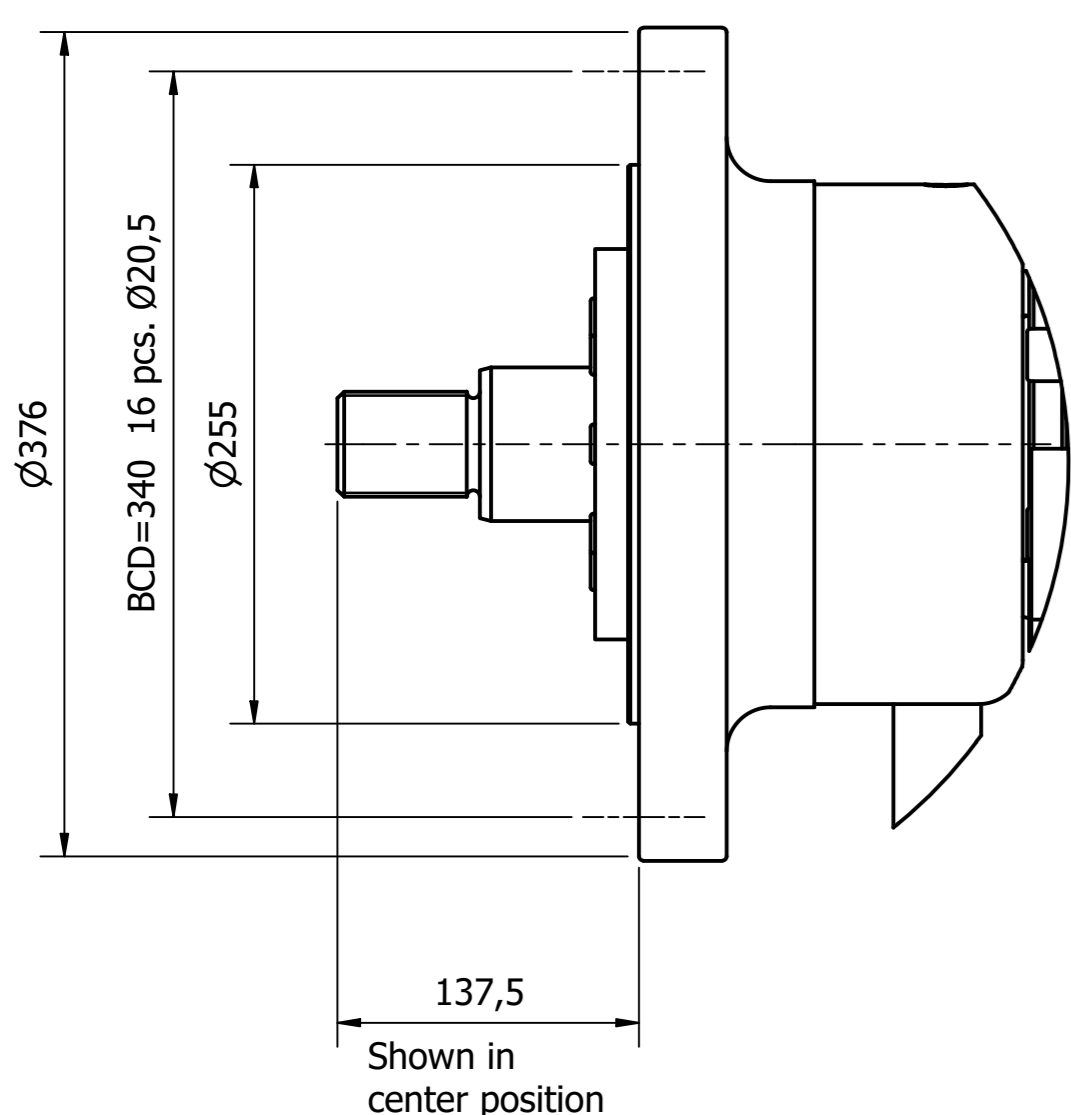
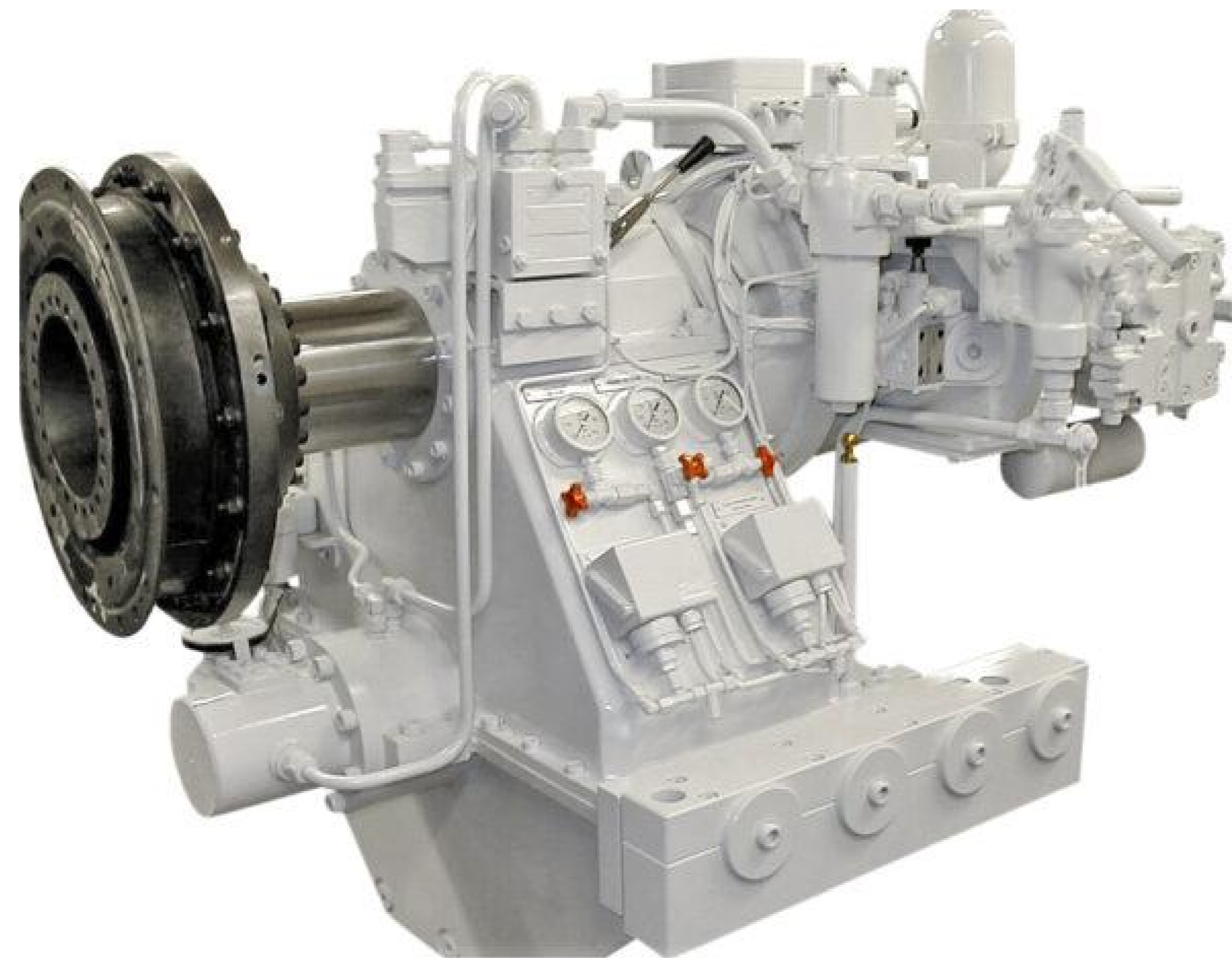
DATA SHEET

MARINEGEAR CPG50

With safety according to class

Gear ratios	Torque [Nm]	J-Factor [kW/rpm]	J-Factor [HP/rpm]
2,909 : 1	5700	0,60	0,81
3,571 : 1	5700	0,60	0,81
4,120 : 1	5700	0,60	0,81
4,565 : 1	5700	0,60	0,81
5,095 : 1	5700	0,60	0,81
5,450 : 1	5700	0,60	0,81
5,875 : 1	5300	0,55	0,75
6,111 : 1	4980	0,52	0,71
6,381 : 1	4450	0,47	0,63

OTHER RATIOS AVAILABLE ON REQUEST



Servo for propeller:

- Max. force: 28,9t
- Max. stroke 145mm
- Suitable for feathering propeller

Options:

- Semi flexible foundation
- Semi flexible output coupling

PTO specifications:

- Max. 3 PTO's - each with hydraulic clutch or as live PTO.
- Max. torque f. 1 PTO: 1300Nm
- Max. total torque: 2600Nm
- Rpm speed-up ratio: 1,22:1
- SAE-C / SAE-D / SAE-E flange
- other flanges available on request

Weight (Approx.):

- Weight without PTO: 1520kg
- Weight with 3 PTO's: 1600kg

Direction of rotation:

- Single step gearbox
- Standard left in / right out



1-048-032175-0

HUNDESTED PROPPELLER A/s

E-mail: sales@hundested.com