

Propeller 18" – 20"

Single Pitch for shaft

- 1) OPERATING INSTRUCTIONS 3-blade Gori Folding Single Pitch Propeller
- A) Disassemble complete propeller hub for mounting
- B) Assemble hub on shaft
- C) Exchange of "rubber blade stop"
- D) Exchange of "zinc anodes"
- E) Cleaning of "Gearwheel"
- F) Service sets & Spare Parts List
- G) Supplied Tools

## DK

**Læs instruktionen før der arbejdes med propellen.**

### **Vigtigt!**

Udskift zink hvis de er korroderet mere end 50%.

### **Advarsel!**

Pas på skarpe kanter.

## GB

**Read the Instructions before any work on the propeller.**

### **Important!**

Replace Zinc if eroded more than 50%.

### **Warning!**

Beware of sharp edges.

## D

**Bitte die Anweisung lesen, bevor Sie mit dem Propeller arbeiten.**

### **Wichtig!**

Zinkteile auswechseln, wenn sie mehr als 50% korrodiert sind.

### **Warnung!**

Achten Sie auf die scharfe Kanten.

## F

**Lire les instructions avant toute intervention sur l'hélice**

### **Important!**

Remplacer l'anode zinc si elle est corrodé à plus de 50%

### **Attention!**

Attention aux bords coupants

## IT

**Leggere attentamente le Istruzioni prima di qualsiasi operazione sull'elica.**

### **Importante!**

Sostituire l'anodo di zinco se usurato più del 50%

### **Avvertenza!**

Prestare attenzione alle parti taglienti

## ESP

**Lea las instrucciones antes de efectuar cualquier trabajo en la hélice.**

### **¡ Importante !**

Reemplazar el ánodo si observa mas de un 50 % de corrosión.

### **¡ Advertencia !**

Tenga cuidado con las esquinas afiladas.

## **OPERATING INSTRUCTIONS 3-blade Gori Folding Single Pitch Propeller**

CONGRATULATIONS on choosing the 3-blade Gori Folding Propeller.

### **Under sail**

When sailing under sail the blades usually fold, however, you should put the lever in reverse if the engine is not turned on. This will lock the shaft and ensure that the propeller folds and does not spin.

When under sail, and boat is moving forward thru the water, the propeller will usually fold, to make sure this is the case, the shaft must be stopped before the engine is turned off.

With a mechanic gear box, you may leave the lever in reverse. The shaft is stopped, and the propeller will not spin.

With a hydraulic gear box, you need to put the lever in reverse (boat moving forward thru the water), before turning off the engine, to make sure the shaft is stopped, and propeller will fold.

### **MOVING AHEAD UNDER POWER**

When the engine is turned on, and lever moved from neutral to forward position, the propeller will automatically open (Centrifugal Power), and the boat start moving forward.

### **MOVING ASTERN UNDER POWER:**

When moving backwards from a stand still position (lever moved from neutral to astern), centrifugal power will open the blades, and the boat start moving backwards. When putting the lever back to neutral, the blades will not fold (Moving Backwards), when putting the lever back to forward, the propeller will just start turning the other way, and boat will move ahead.

In reverse, the curved edge on the blade will always be the leading edge. When moving forward from a standstill (folded blades), the curved edge of the blade is the leading. When switching from reverse to forward (Maneuvering), the straight edge of the blade will always be the leading edge when moving forward. The single pitch propeller (SP) operates the same pitch on both sides of the blades.

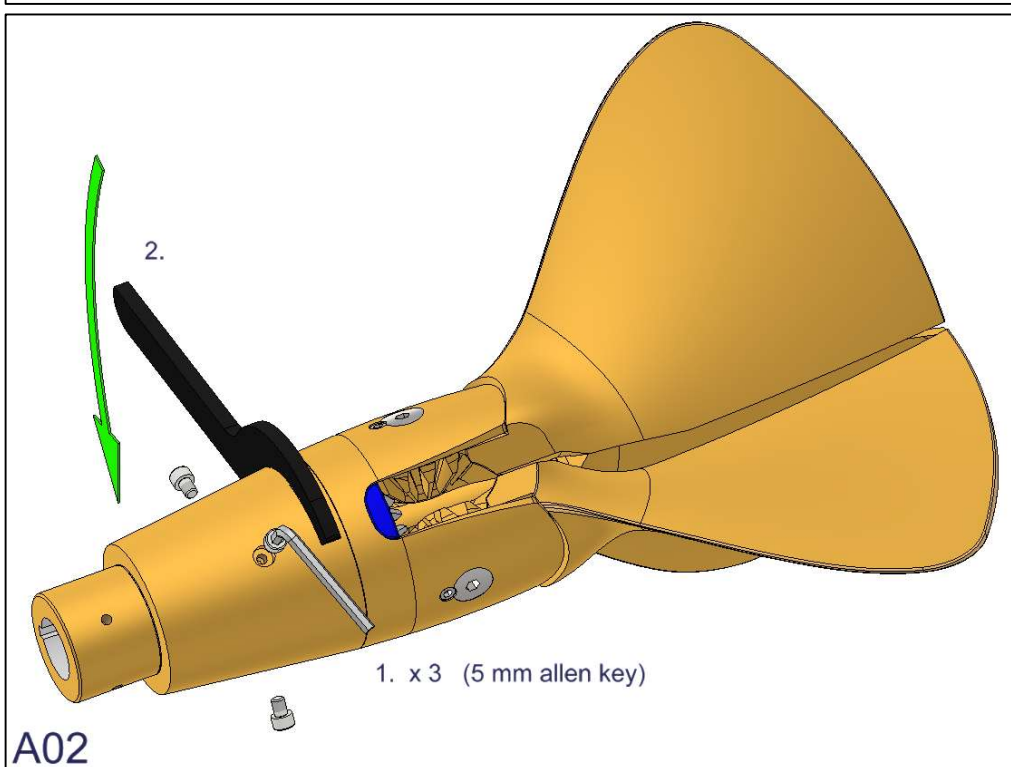
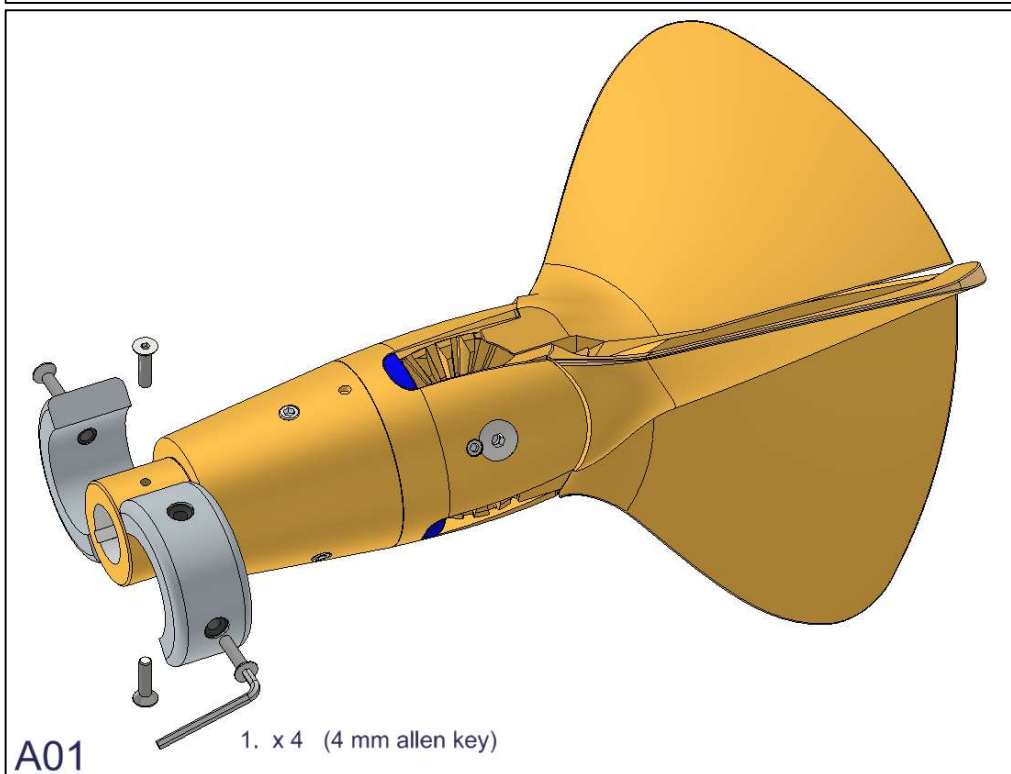
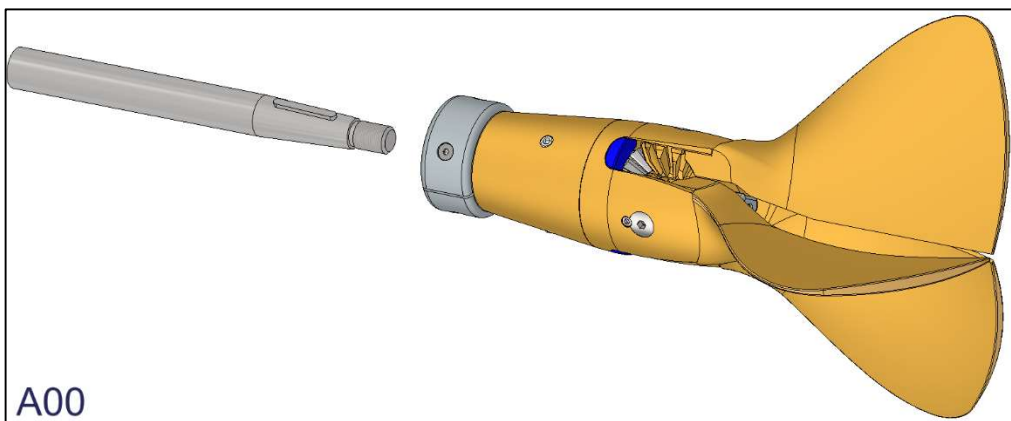
### **Before going sailing, check that the propeller works in both forward and reverse.**

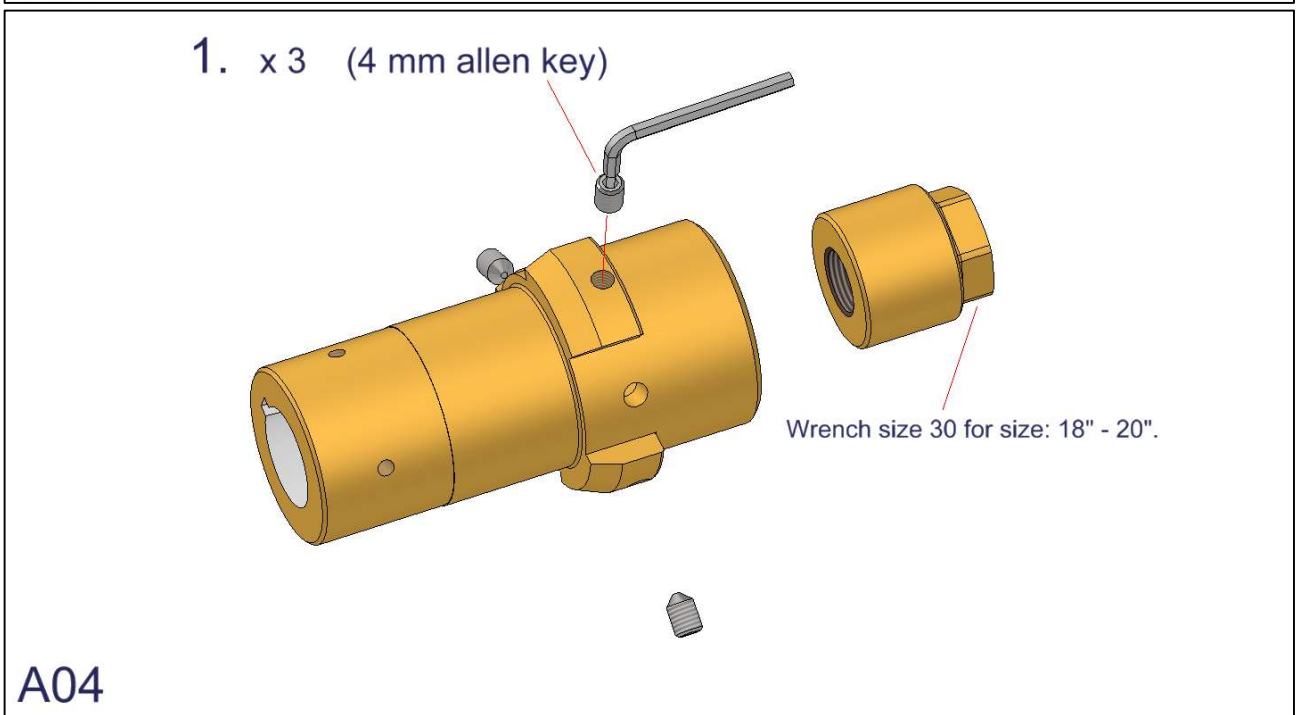
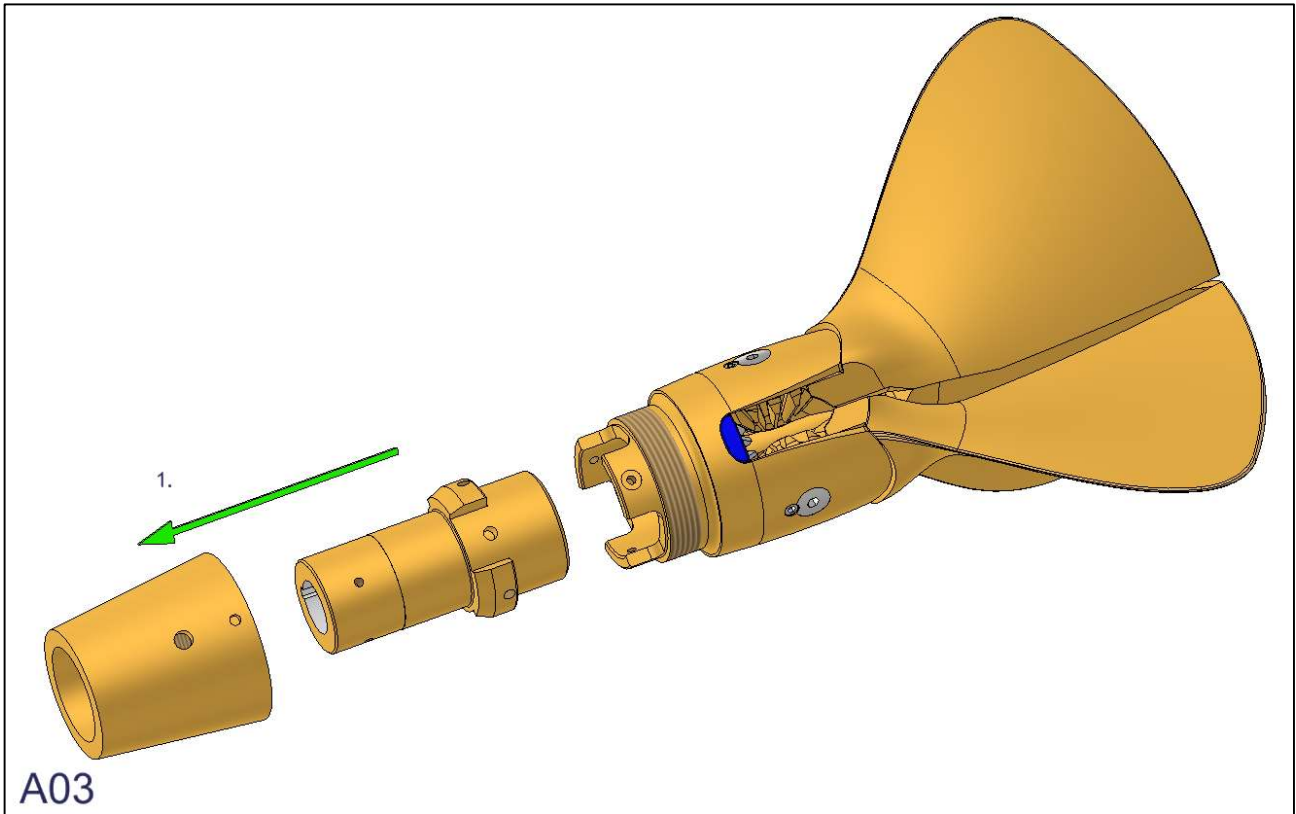
For the propeller to operate properly, the propeller must be clean and the blades able to move easy and freely. If the boat has not been used for some time, you should shift cautiously between forward and reverse a few times before sailing to clean the teeth of the blades and the gears from fouling.

## **WARNING !**

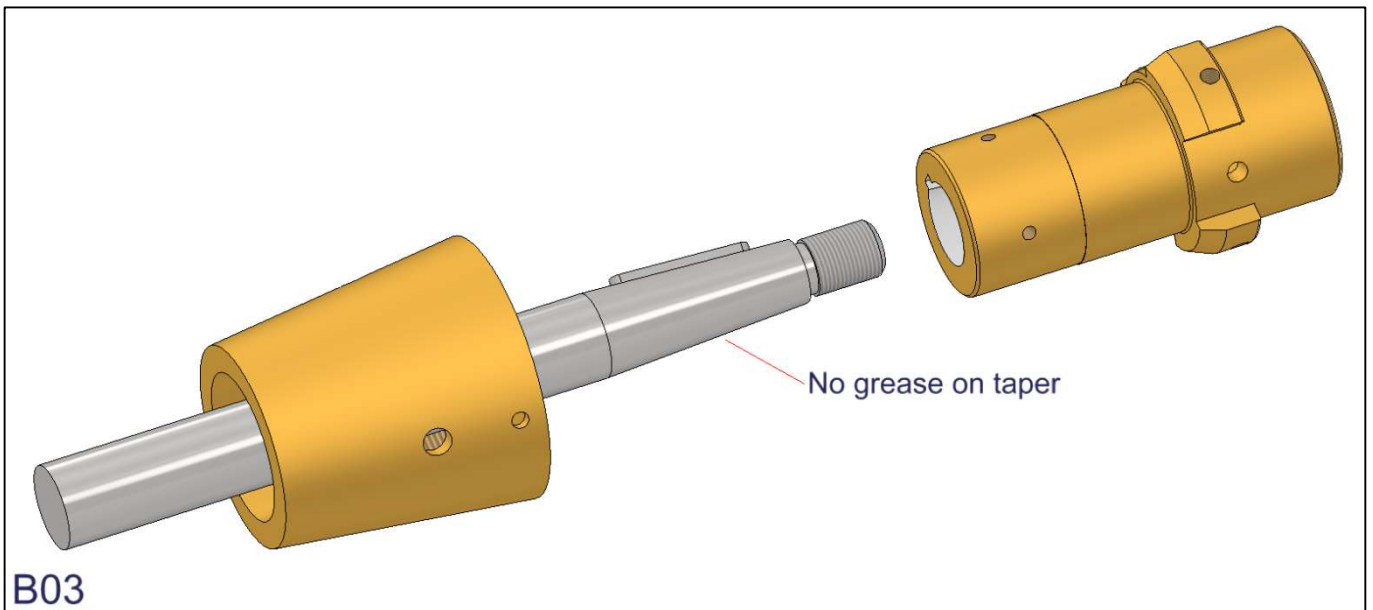
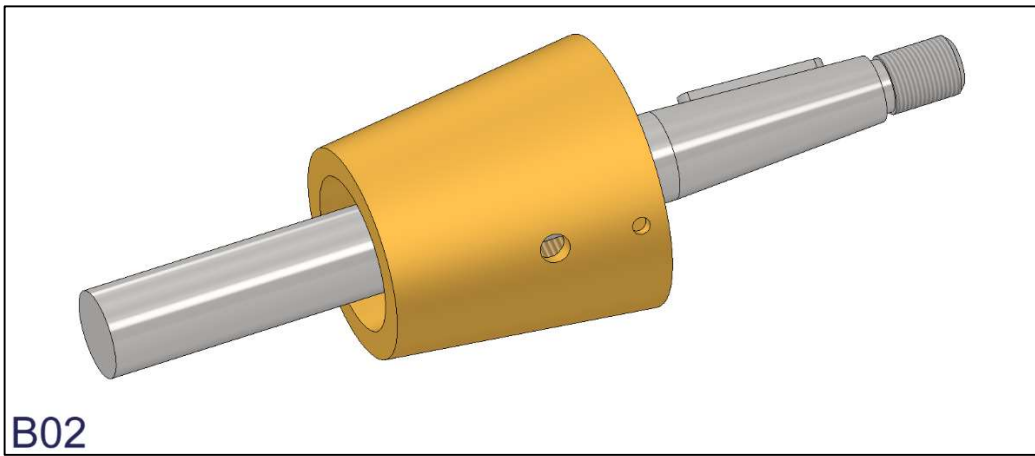
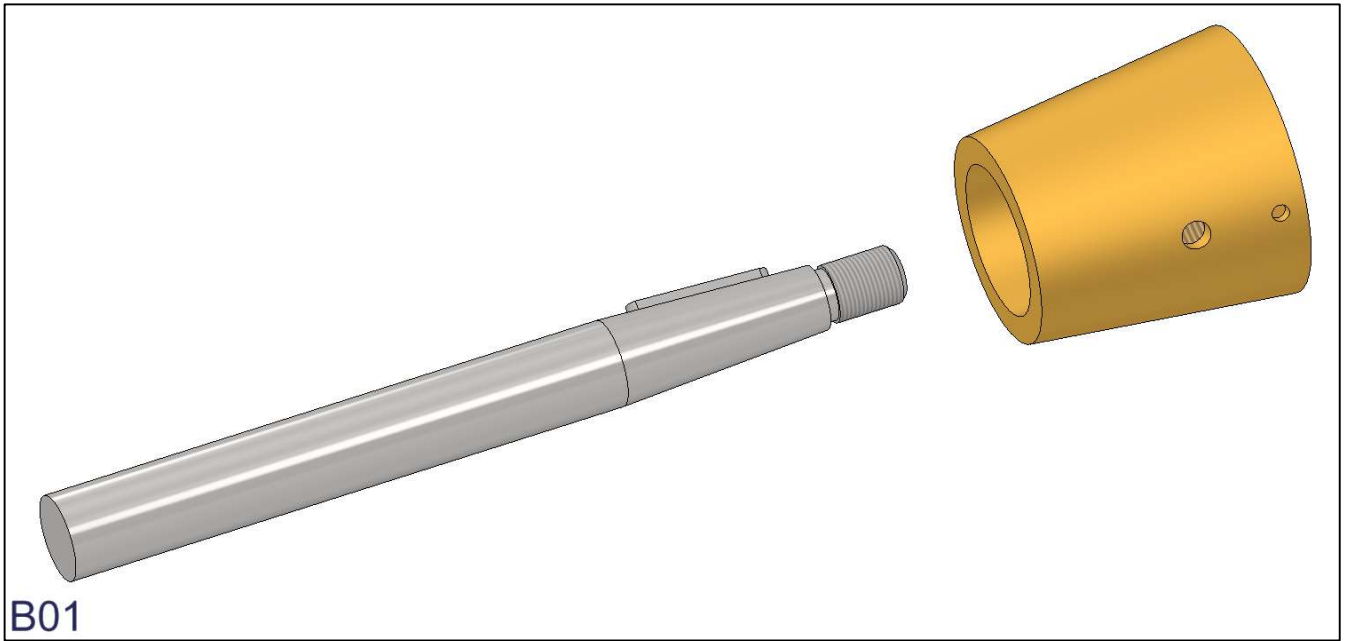
- **Do not start the engine when the boat is out of the water.**
- **The propeller has sharp edges. Be careful not to cut your fingers !**
- **Make sure that the propeller blades do not suddenly open or close and trap your fingers for example.**
- **Do not turn the propeller/engine shaft until the boat is in the water.**
- **Stop the engine before diving or swimming in the vicinity of the boat.**
- **The propeller blades are like knives and can cause considerable damage when rotating. Be careful!**
- **Do not attempt to remove fishing net or ropes from the propeller when the engine is in motion.**
- **Check that the propeller works in both forward and reverse before starting each trip.**
- **If any strange sounds or vibration are noticed coming from the propeller, stop the engine immediately and solve the problem.**
- **In case of problems in connection with the mounting, use or function of the propeller, contact Gori Propeller or the importer in your country.**

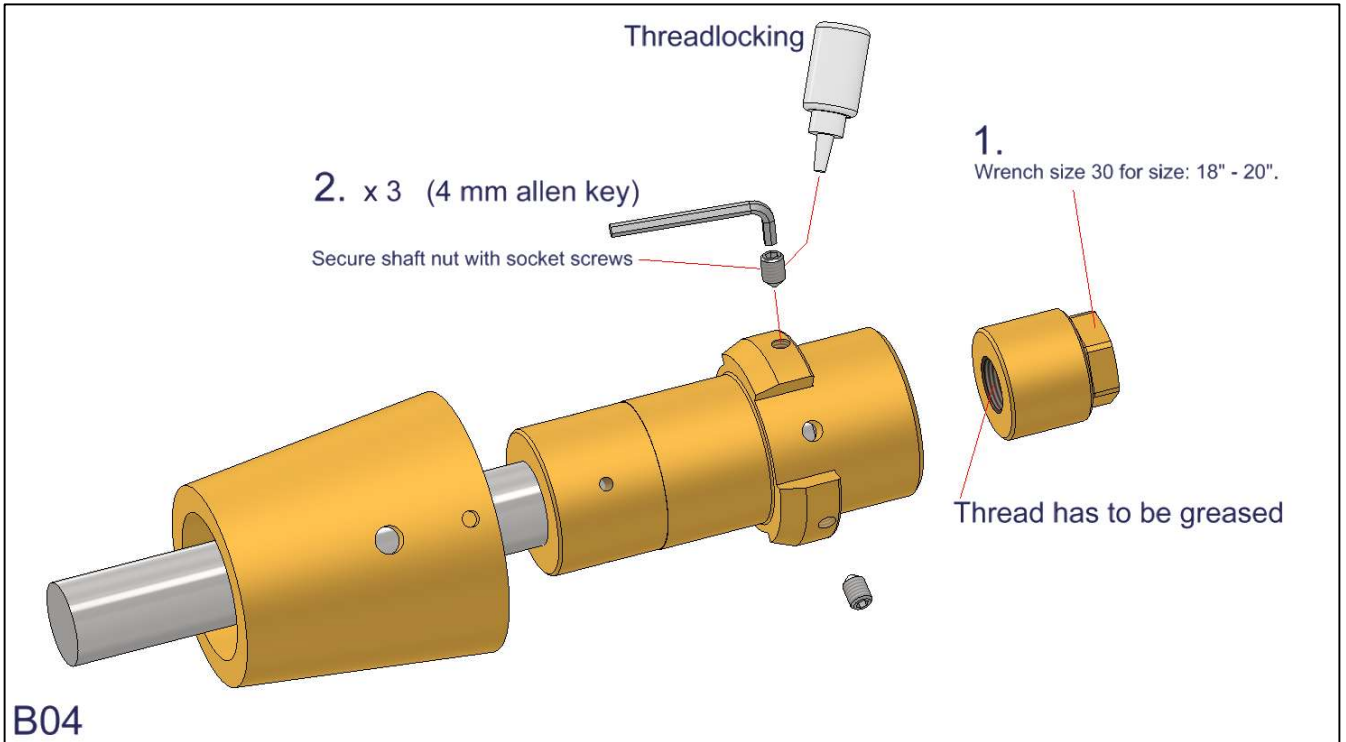
# Disassemble complete propeller hub for mounting – (A)





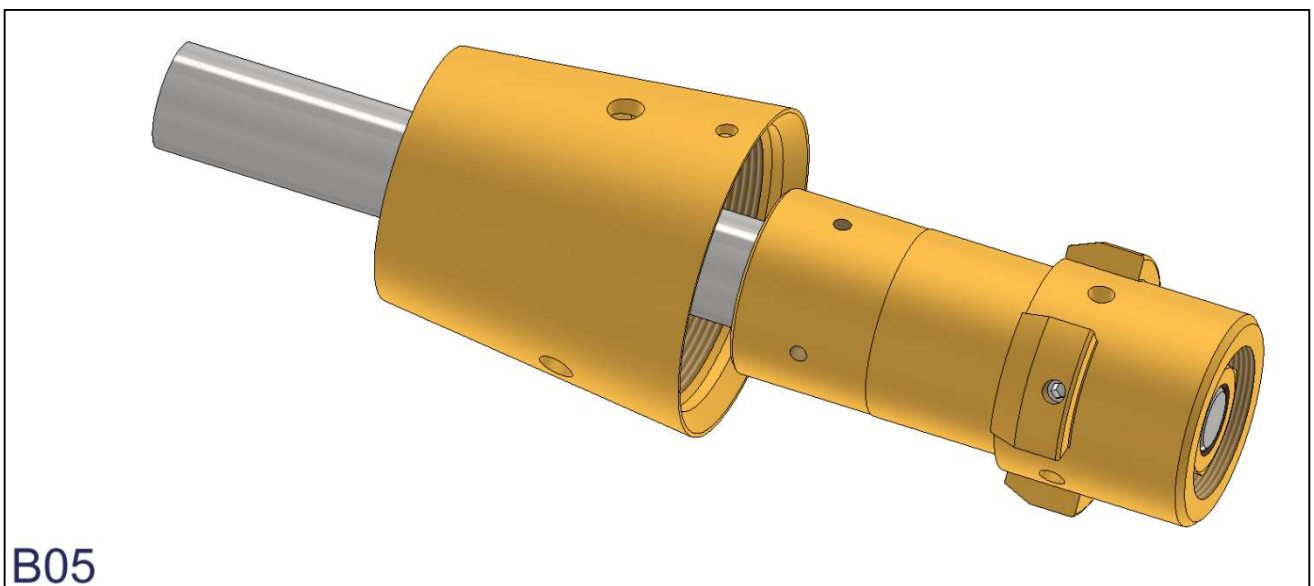
Assemble hub on shaft – (B)



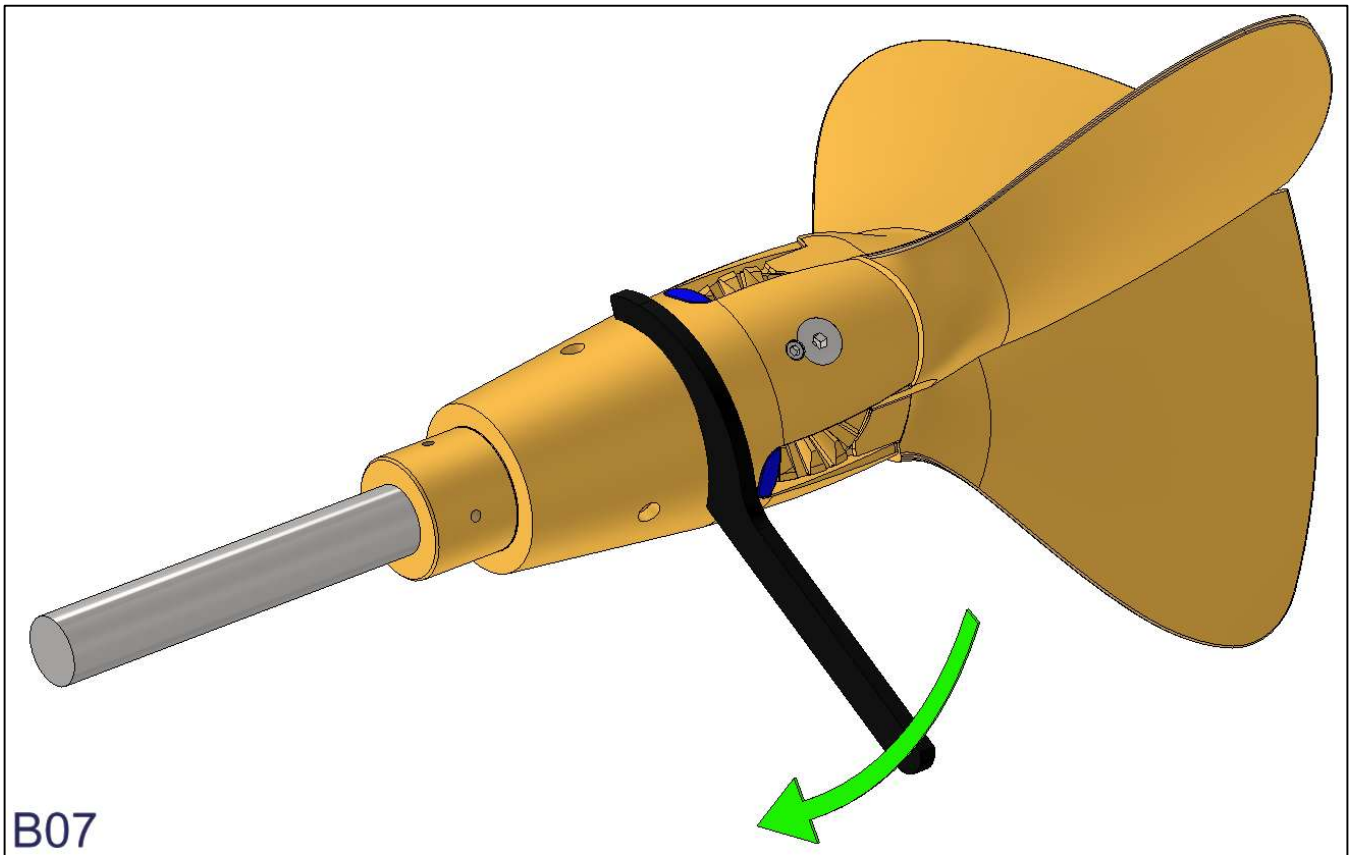
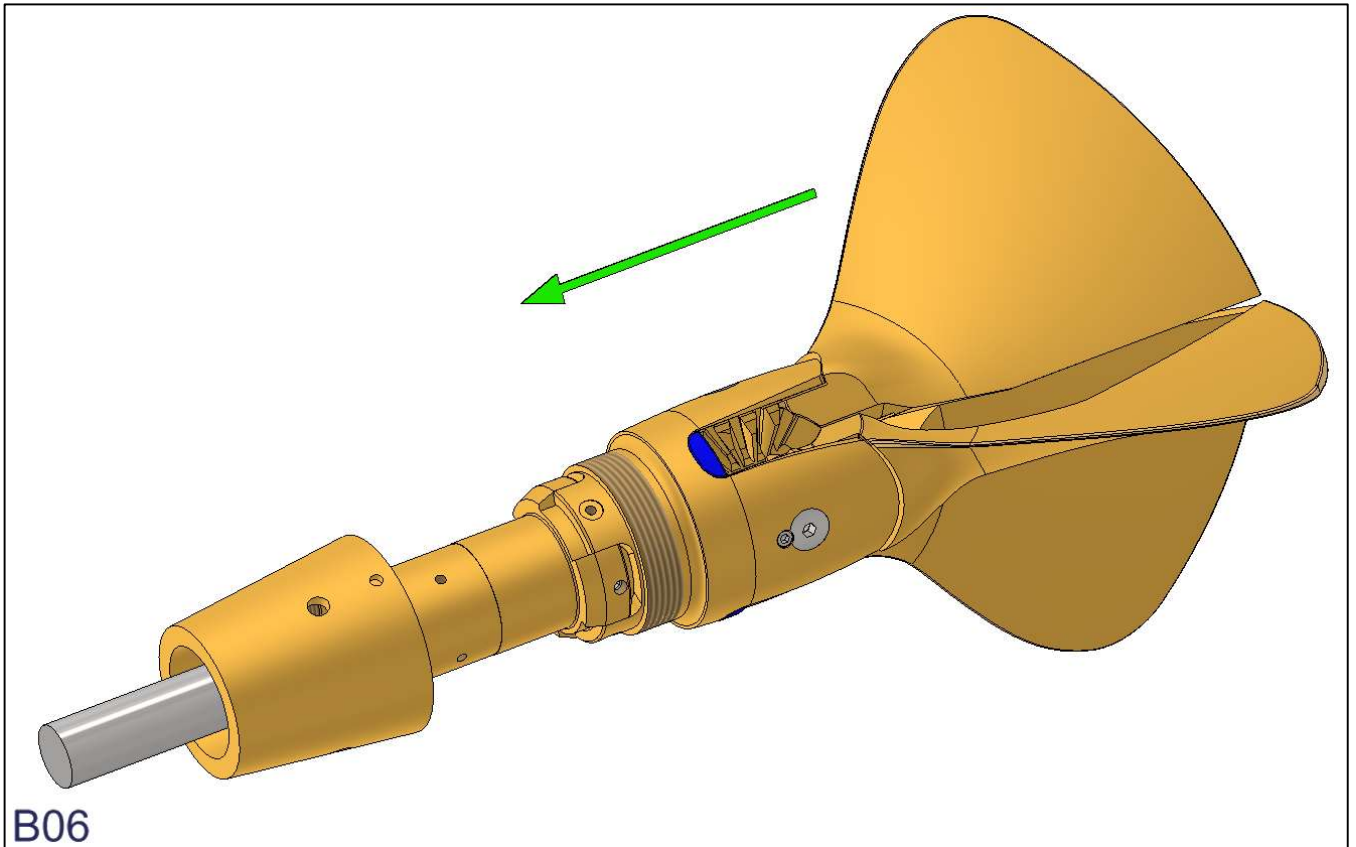


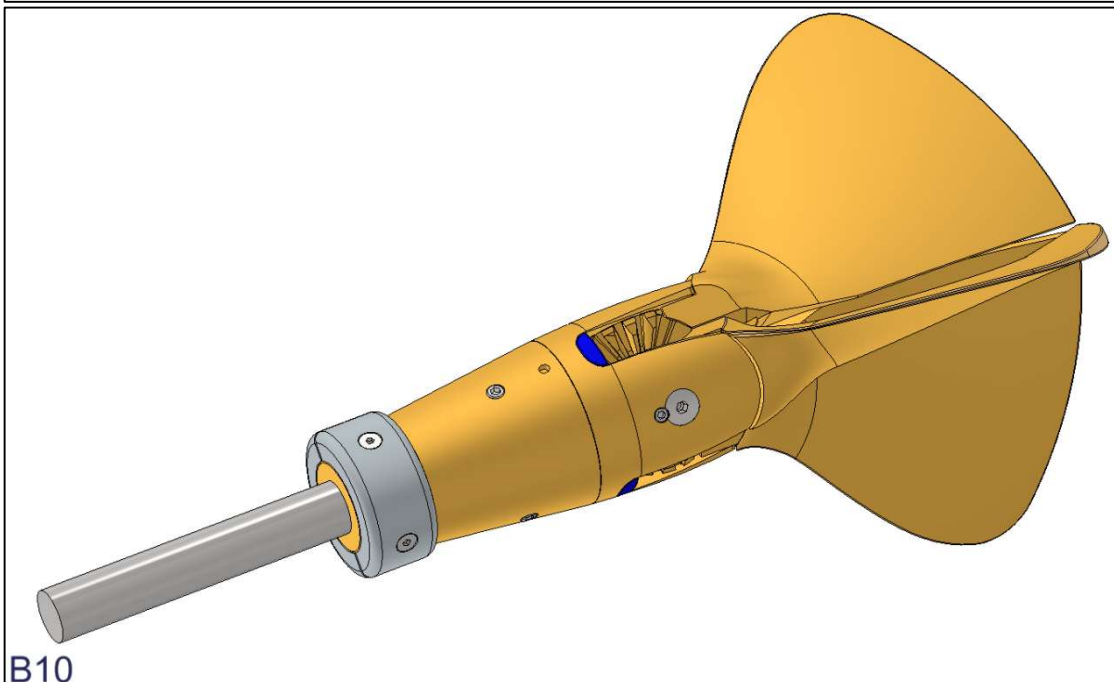
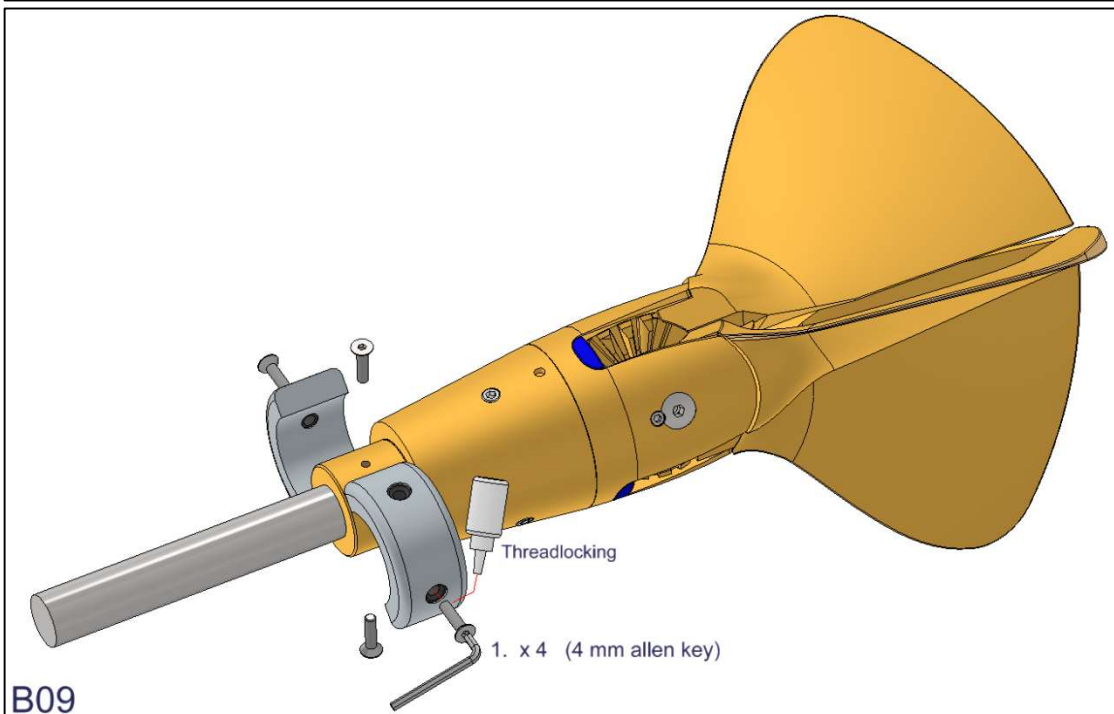
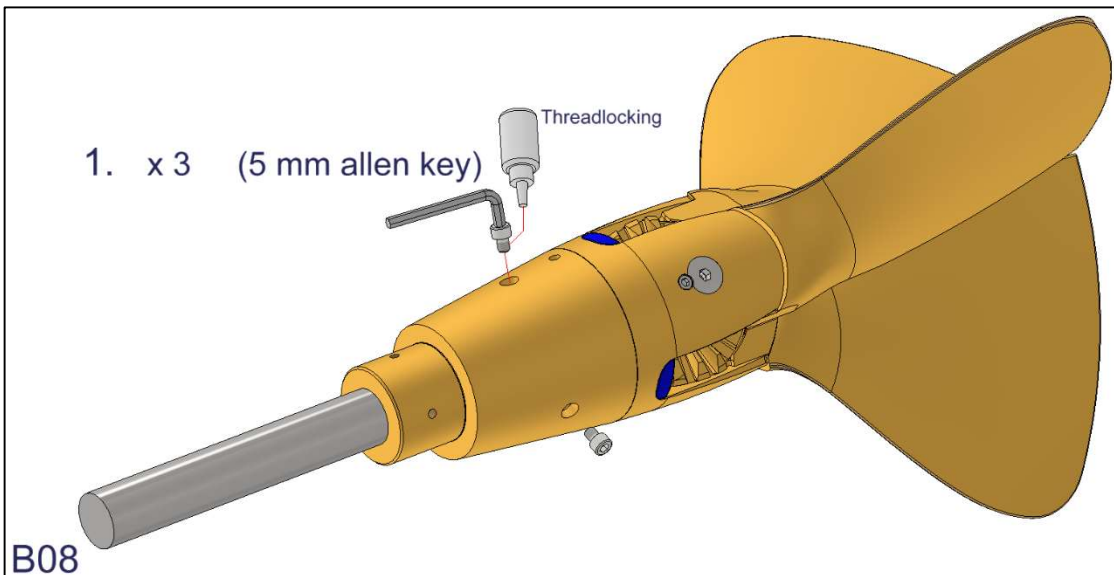
Torque settings for Gori shaft nuts in Nm		
Norm Thread		Torque
Diameter	Pitch	
mm	mm	Nm
Table: See section "F".		

Thread has to be greased
No grease on taper on shaft

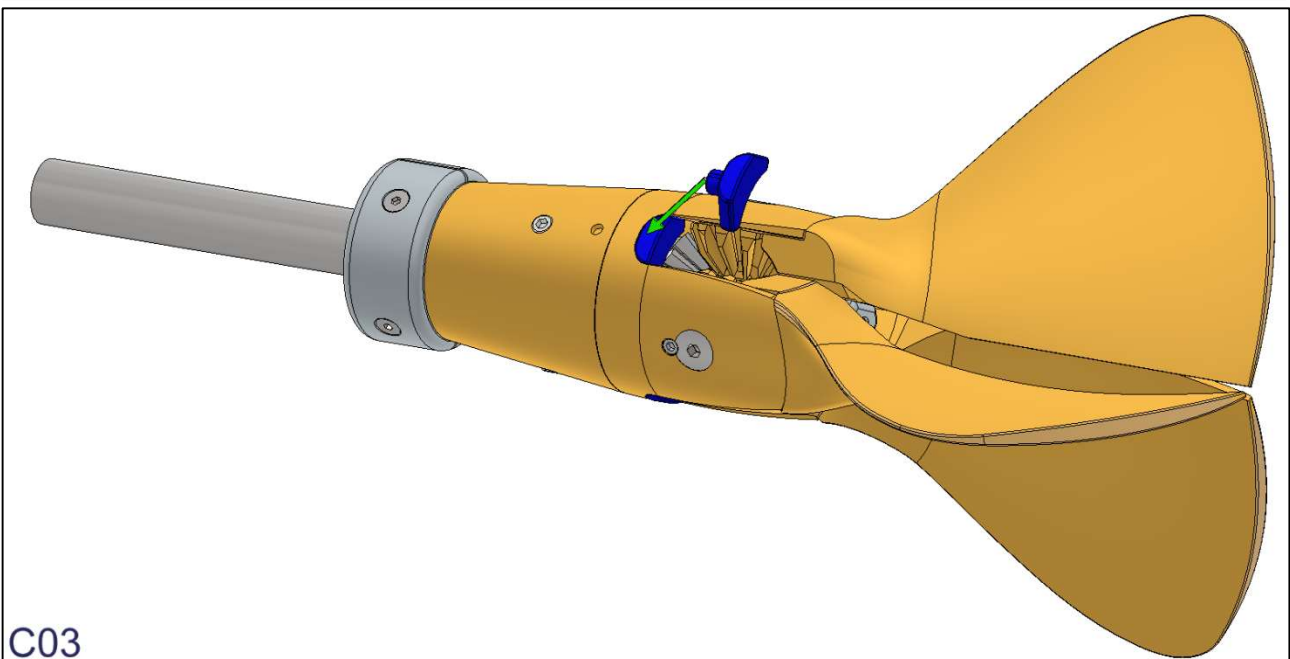
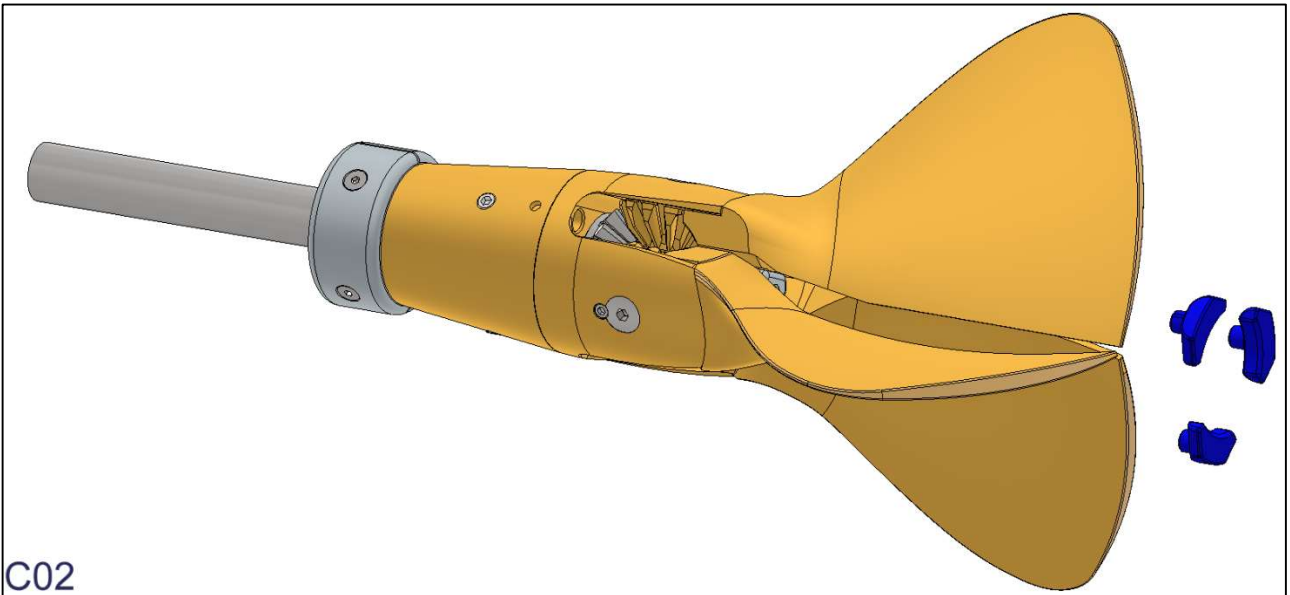
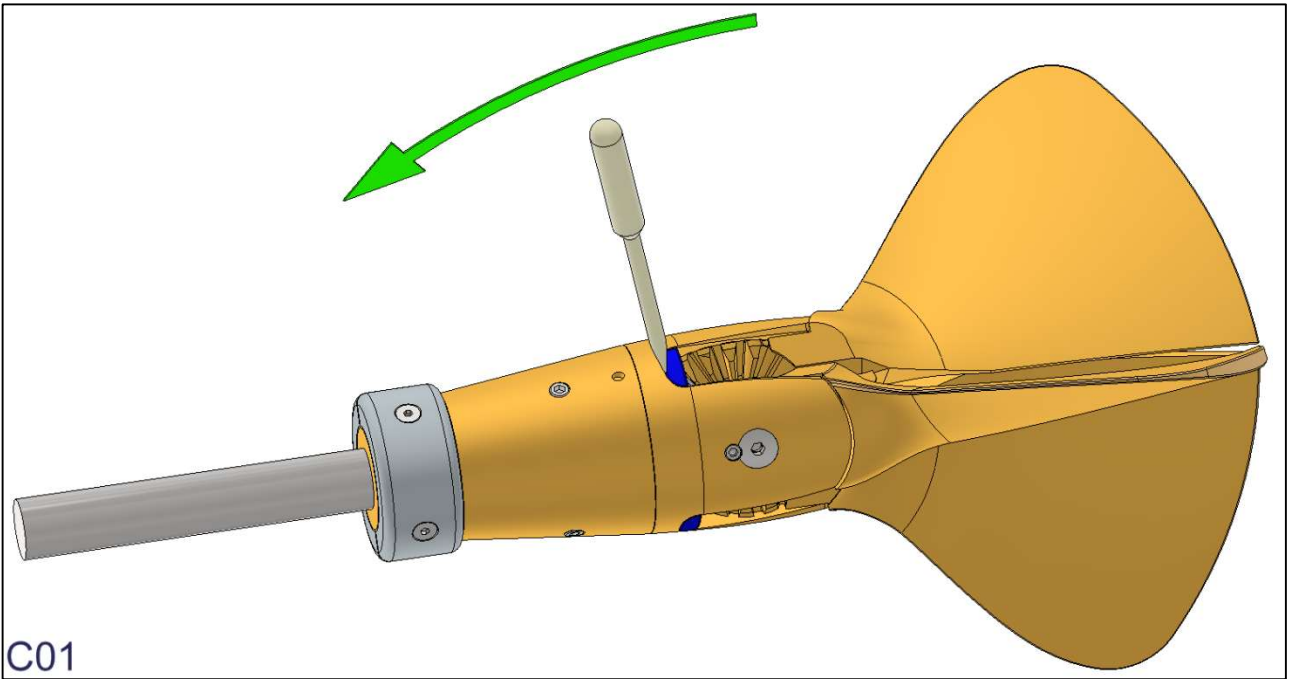




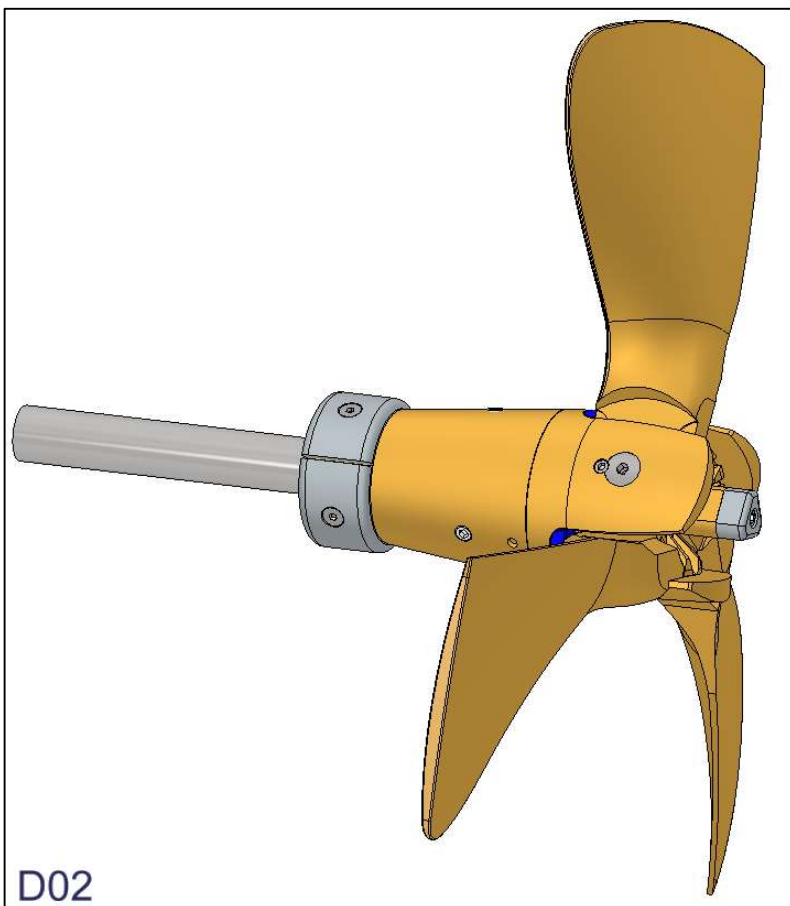
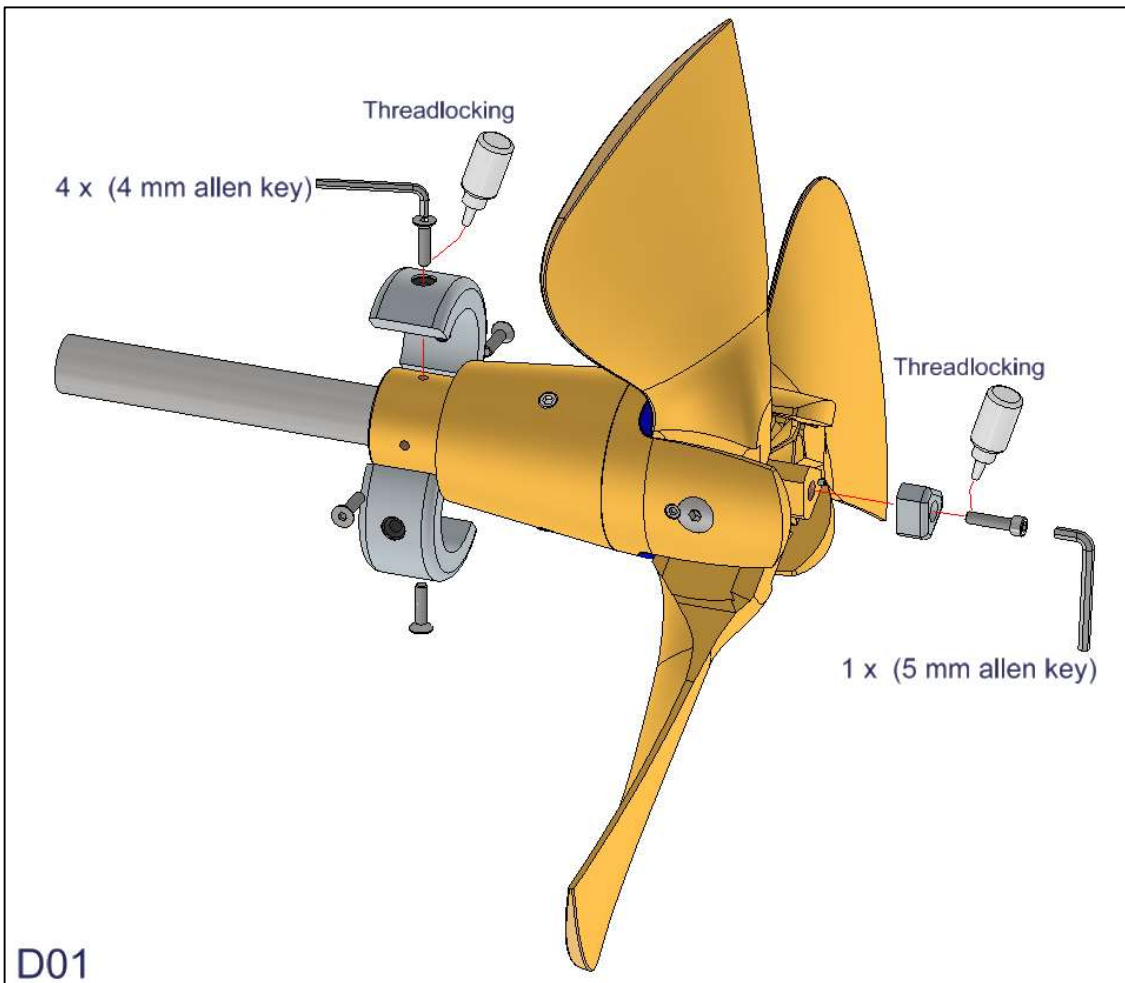


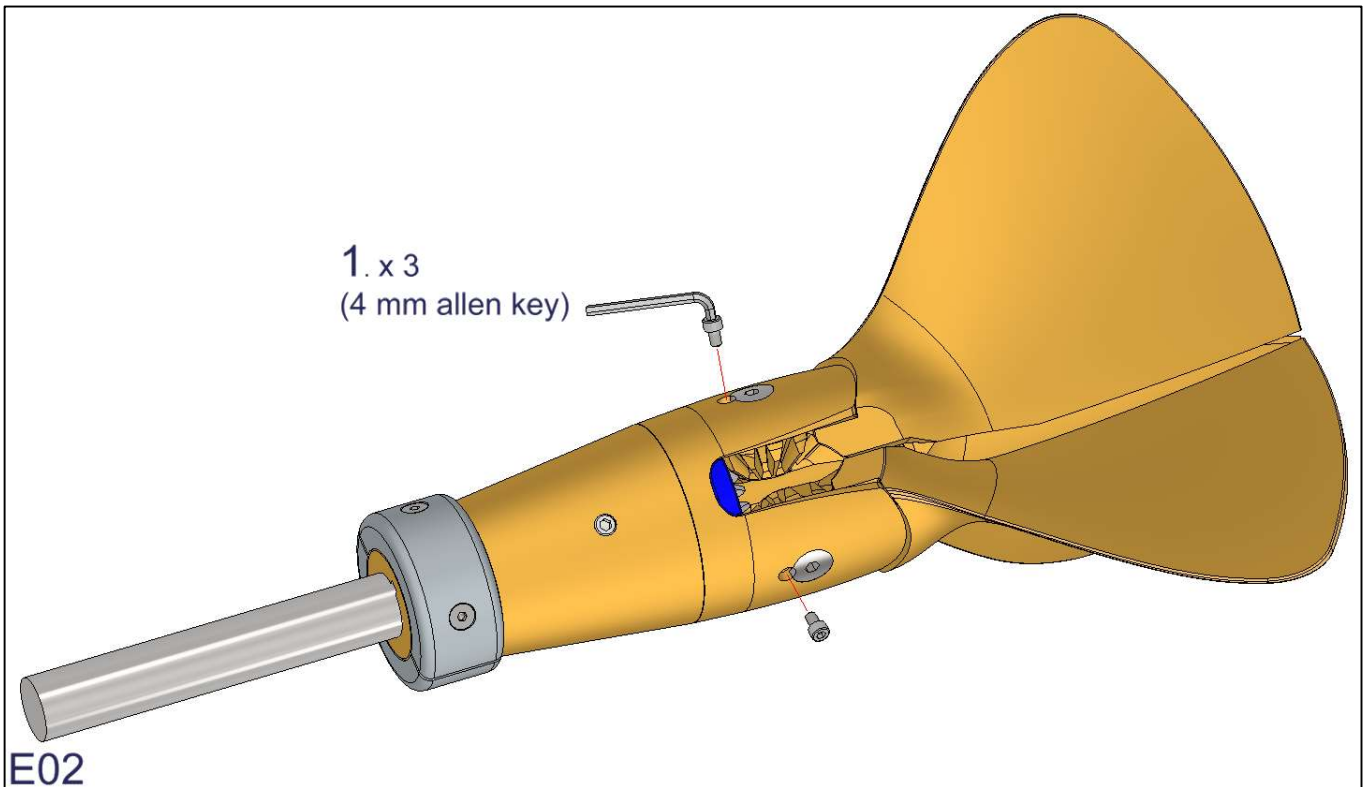
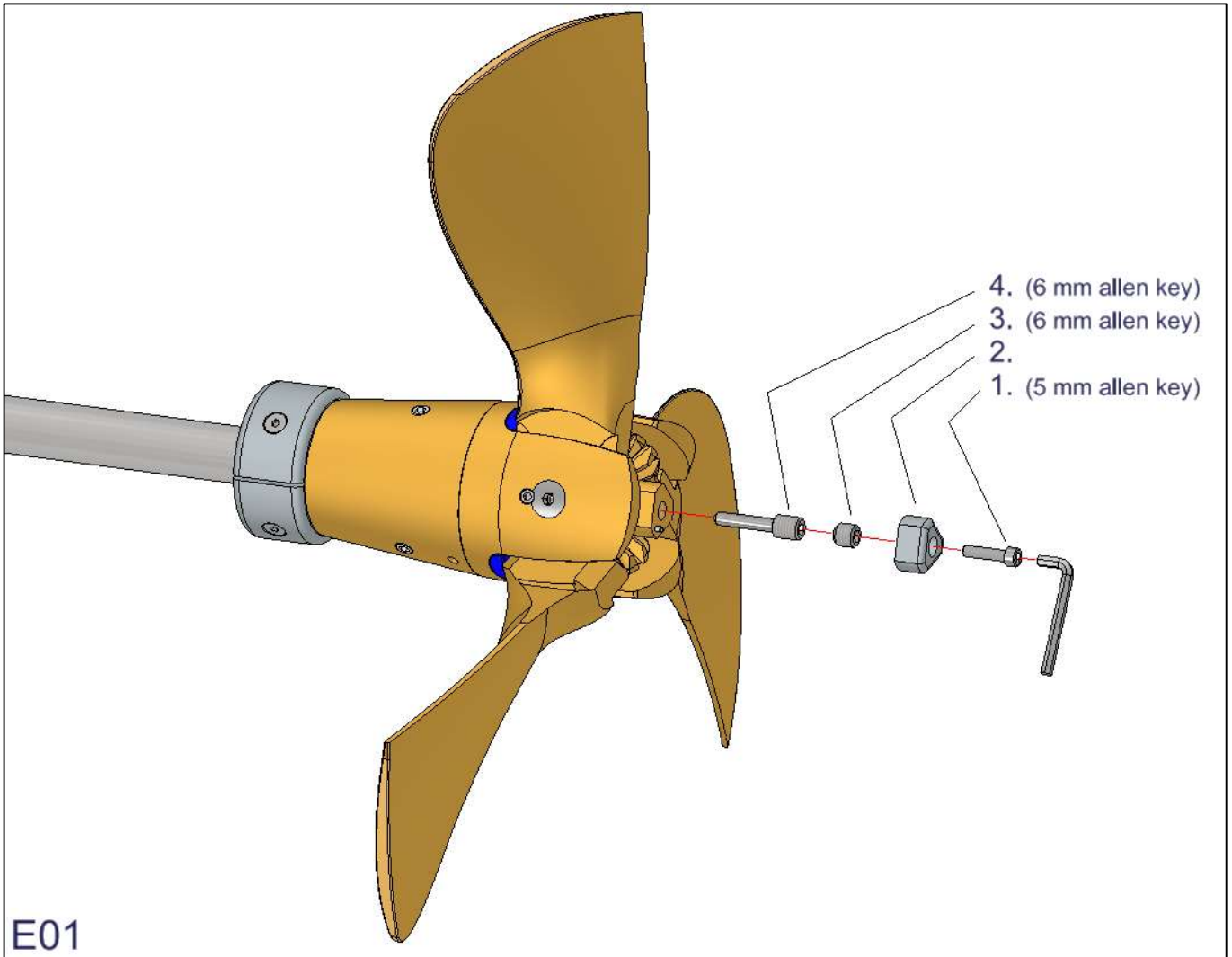


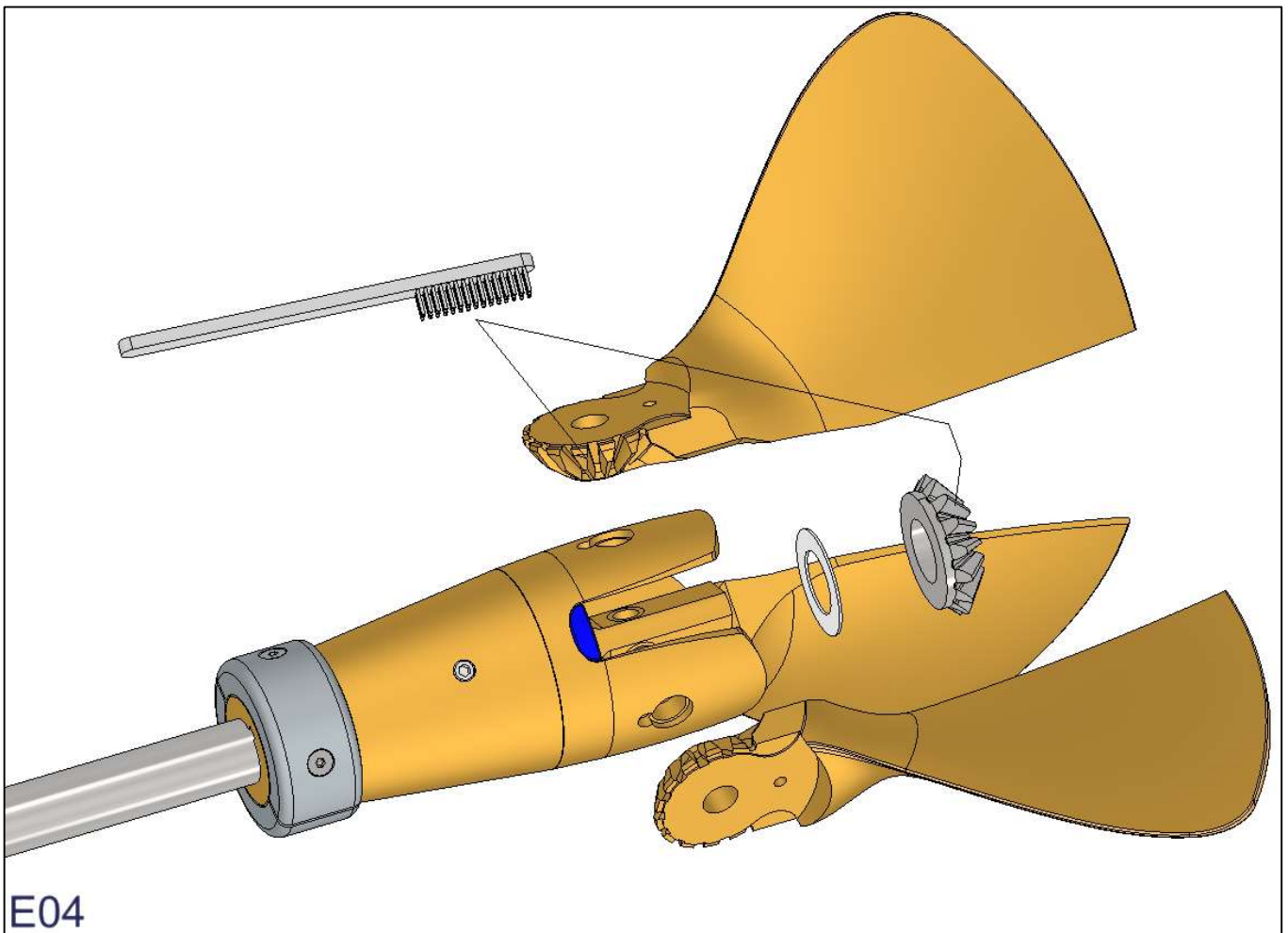
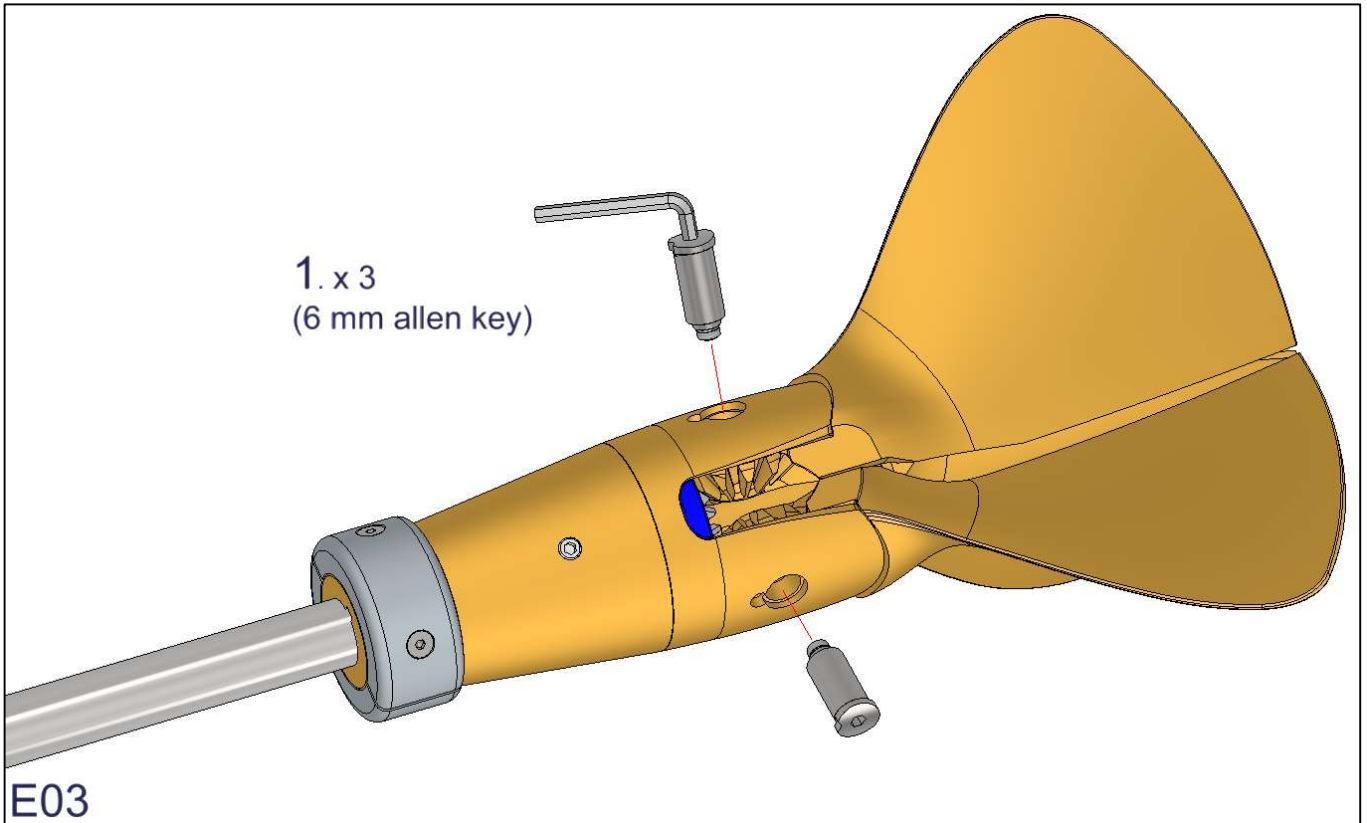
Exchange of "rubber blade stop" – (C)

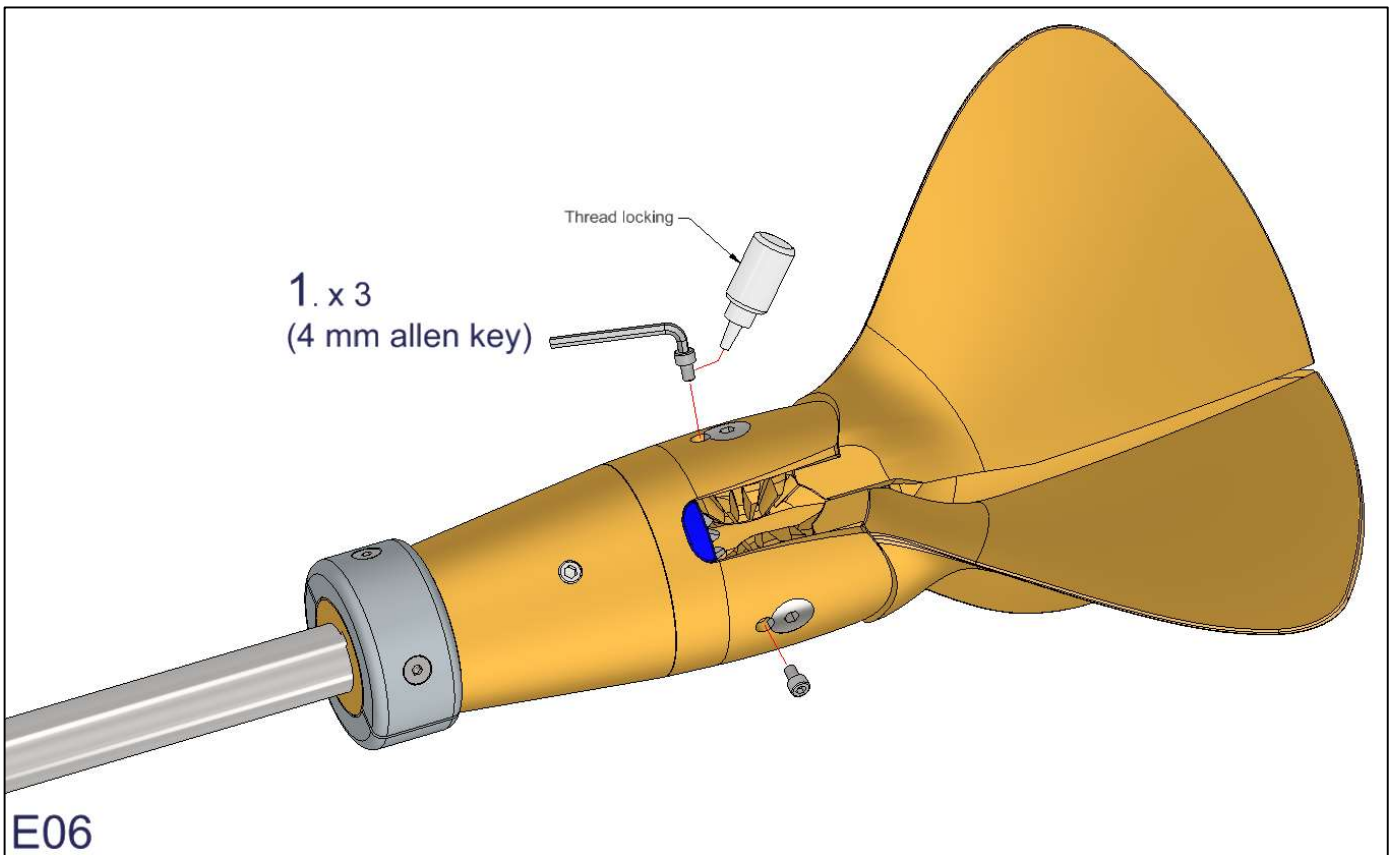
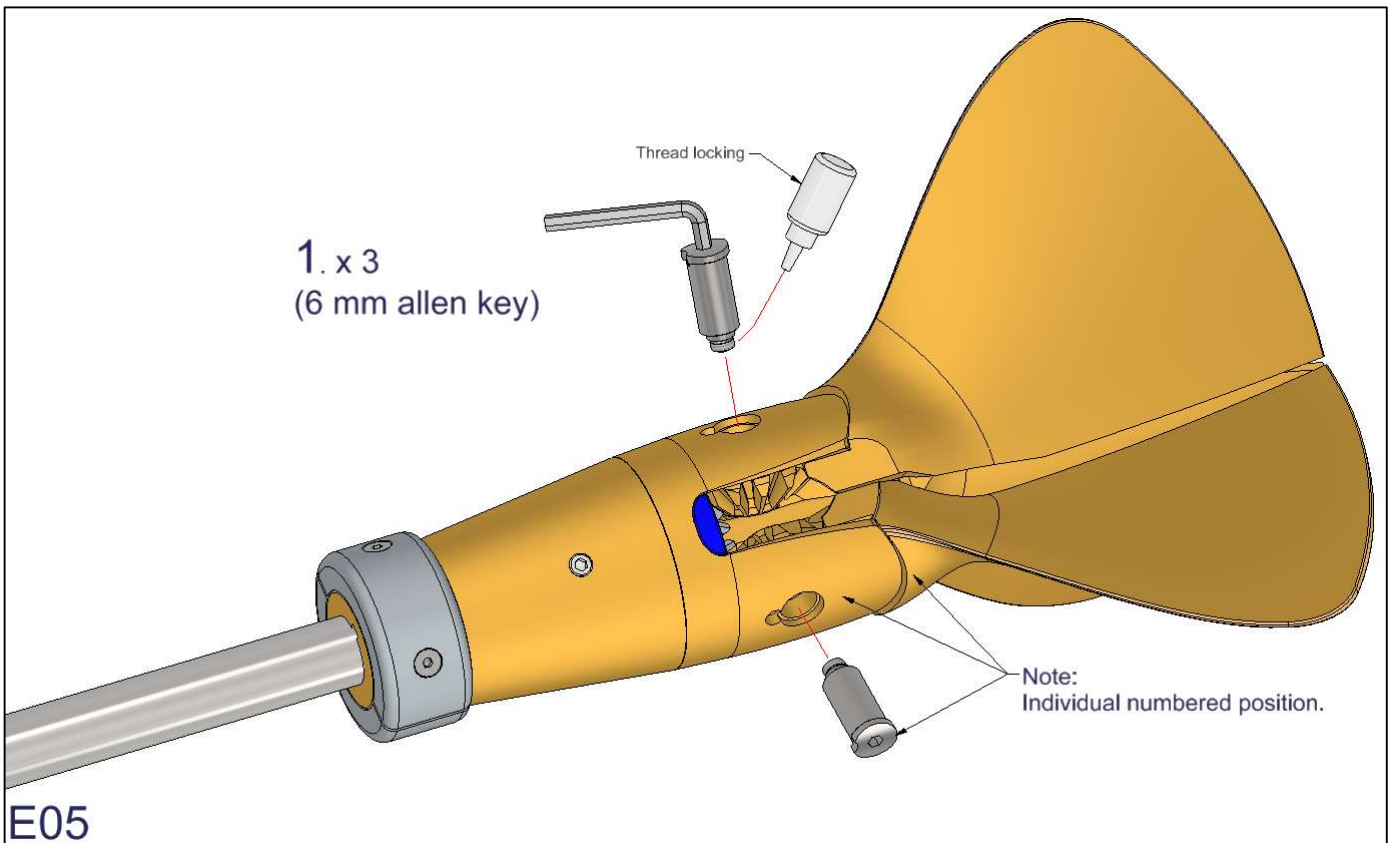


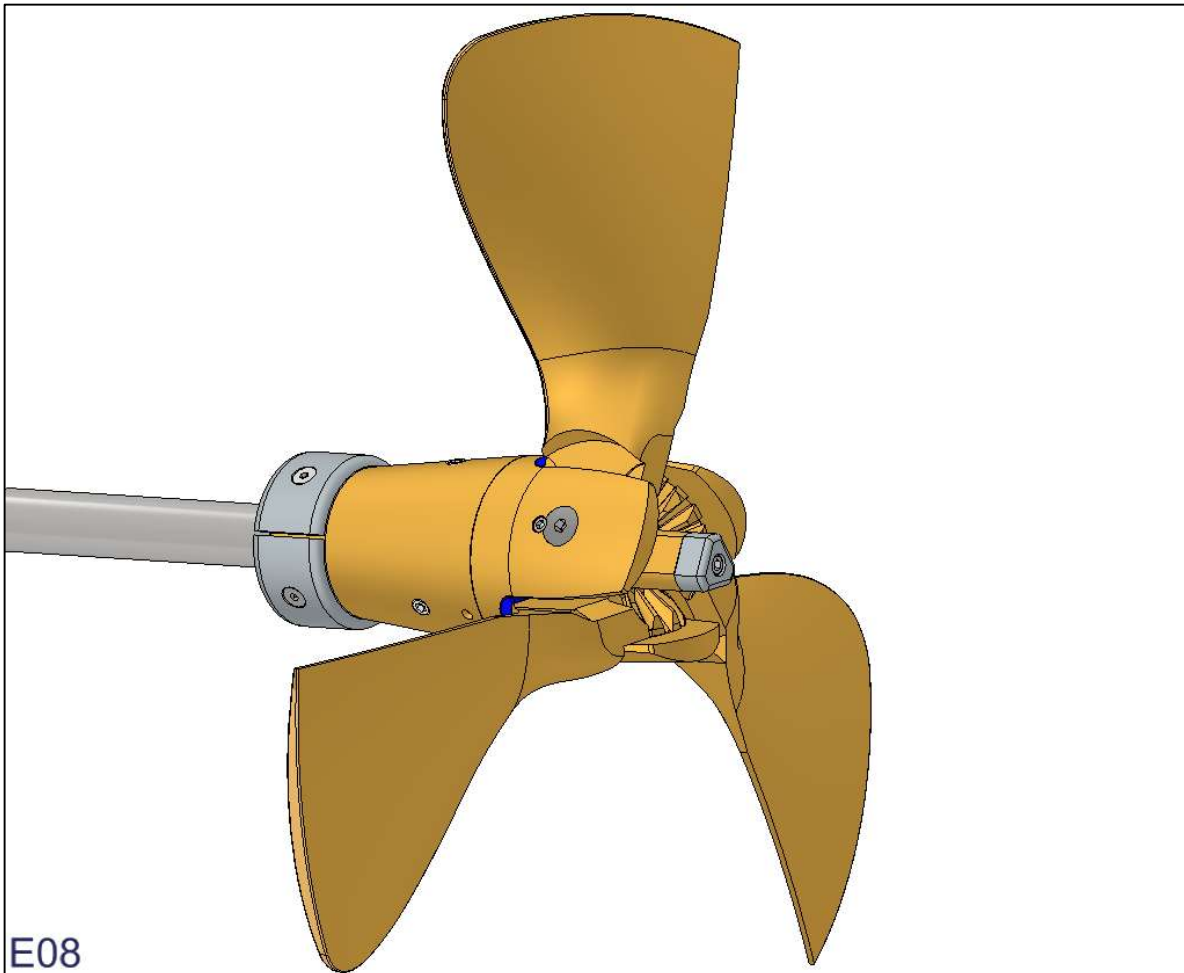
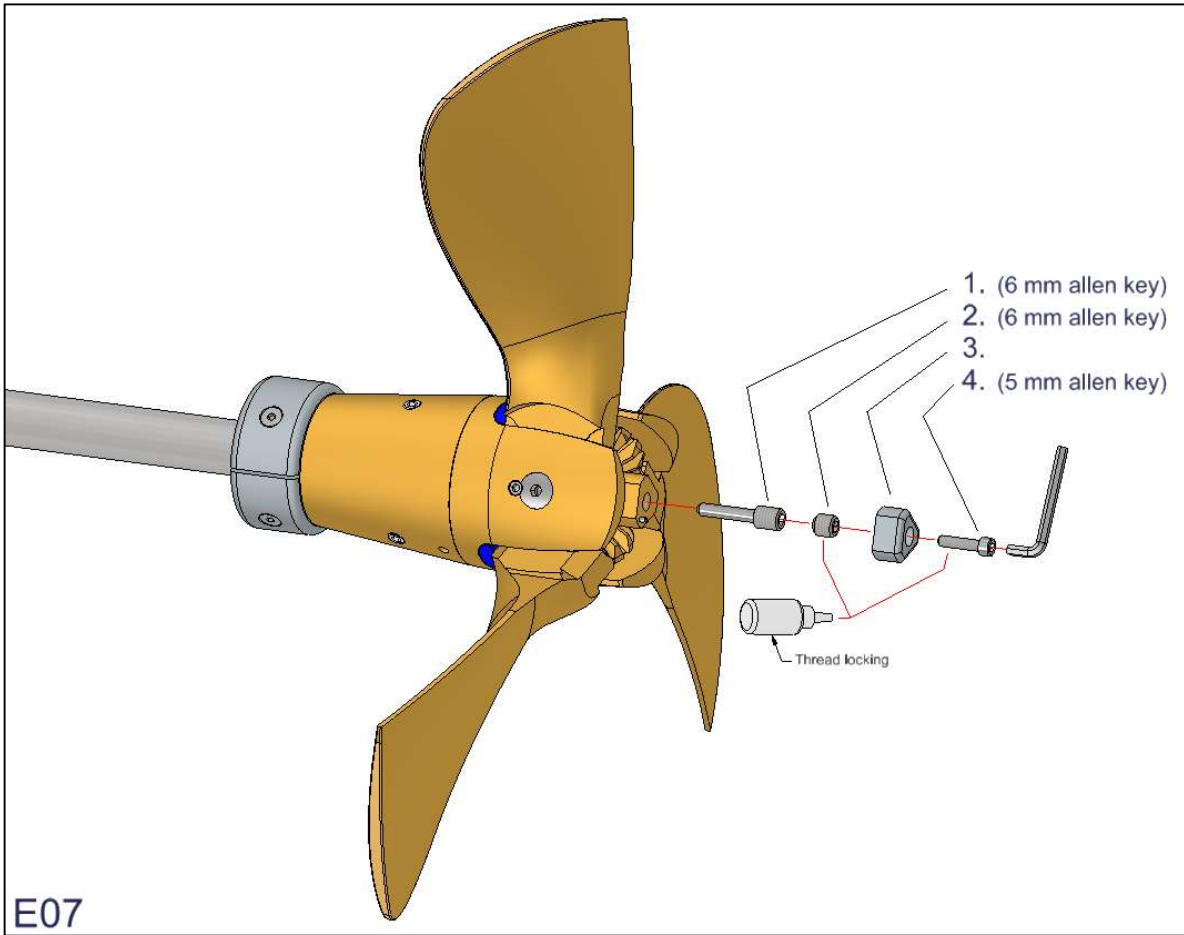
Exchange of "zinc anodes" – (D)



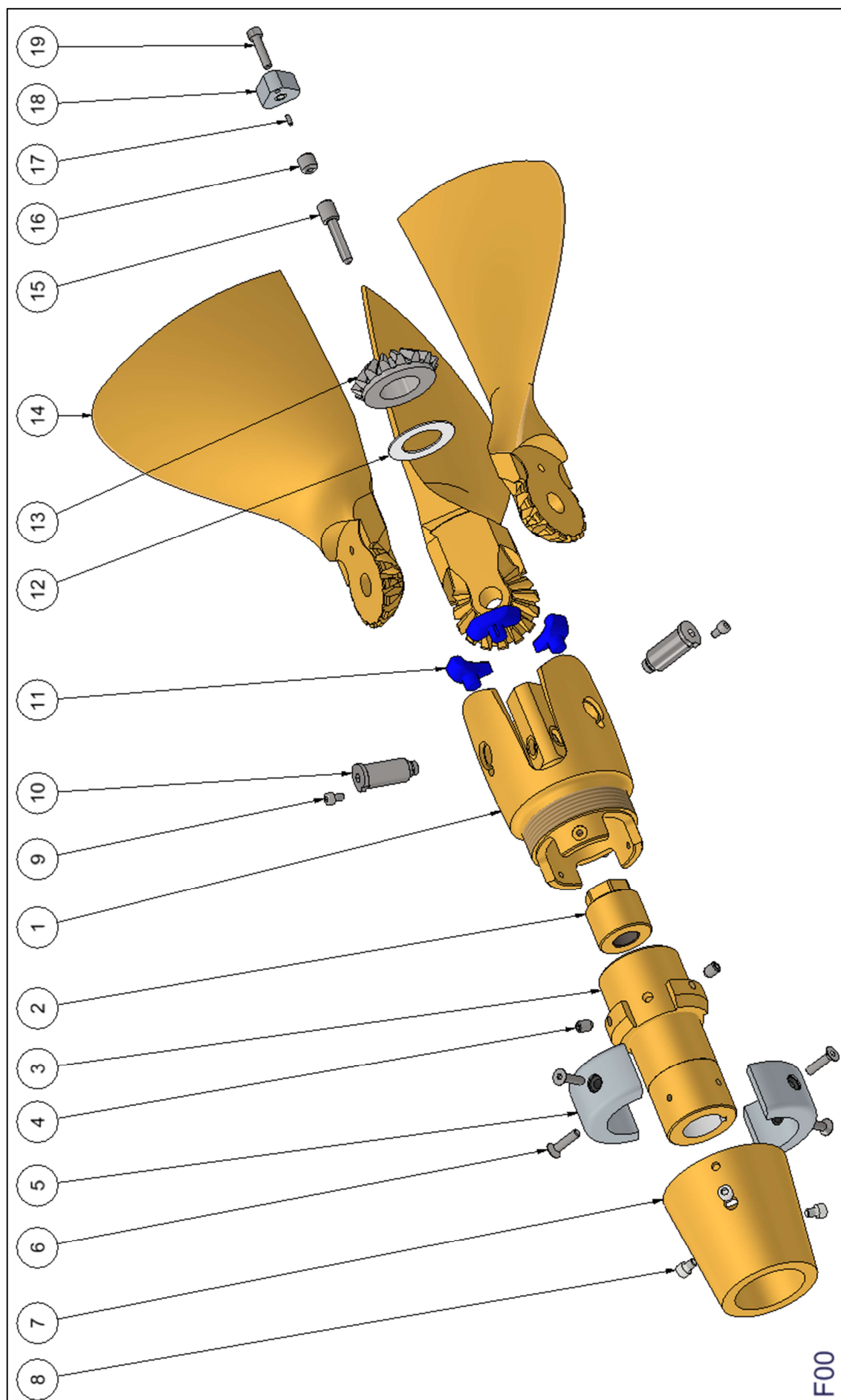












**Size: 18" – 20"**

## Service set 1407310000

ITEM	DK	GB	DE	STOCK NUMBER	QTY
18	Zinkanode - top	Zinc anode	Zink anode	1407300000	1
19	Skrue - Unbrako	Hex Socket Head Screw	Zylinderscherube mit Innensechkant	1407000625	1
-	Gevindsikring	Threadlocking	Schraubensicherung	1410000000	1
-	Unbrakonøgle - 5 mm	Allen key - 5 mm	Inbusschlüssel - 5 mm	1402100000	1

## Service set 14735100SP

ITEM	DK	GB	DE	STOCK NUMBER	QTY
11	Gummistopper - Blå	Rubber stop - Blue	Gummianschläge - Blau	14075000SP	3
18	Zinkanode - top	Zinc anode	Zink anode	1407300000	1
19	Skrue - Unbrako	Hex Socket Head Screw	Zylinderscherube mit Innensechkant	1407000625	1
-	Gevindsikring	Threadlocking	Schraubensicherung	1410000000	1
-	Unbrakonøgle - 5 mm	Allen key - 5 mm	Inbusschlüssel - 5 mm	1402100000	1

## Service set 14075100SP

ITEM	DK	GB	DE	STOCK NUMBER	QTY
11	Gummistopper - Blå	Rubber stop - Blue	Gummianschläge - Blau	14075000SP	3

## Service set 1553000000

ITEM	DK	GB	DE	STOCK NUMBER	QTY
5	Zinkanode - ring	Zinc ring anode	Zinkring anode	1510550000	2
6	Undersænket skrue M6x22, A4	Flat Countersunk Head	Senkschraube	1179910622	4
-	Gevindsikring	Threadlocking	Schraubensicherung	1410000000	1
-	Unbrakonøgle - 4 mm	Allen key - 4 mm	Inbusschlüssel - 4 mm	1402000000	1

## Size: 18" – 20"

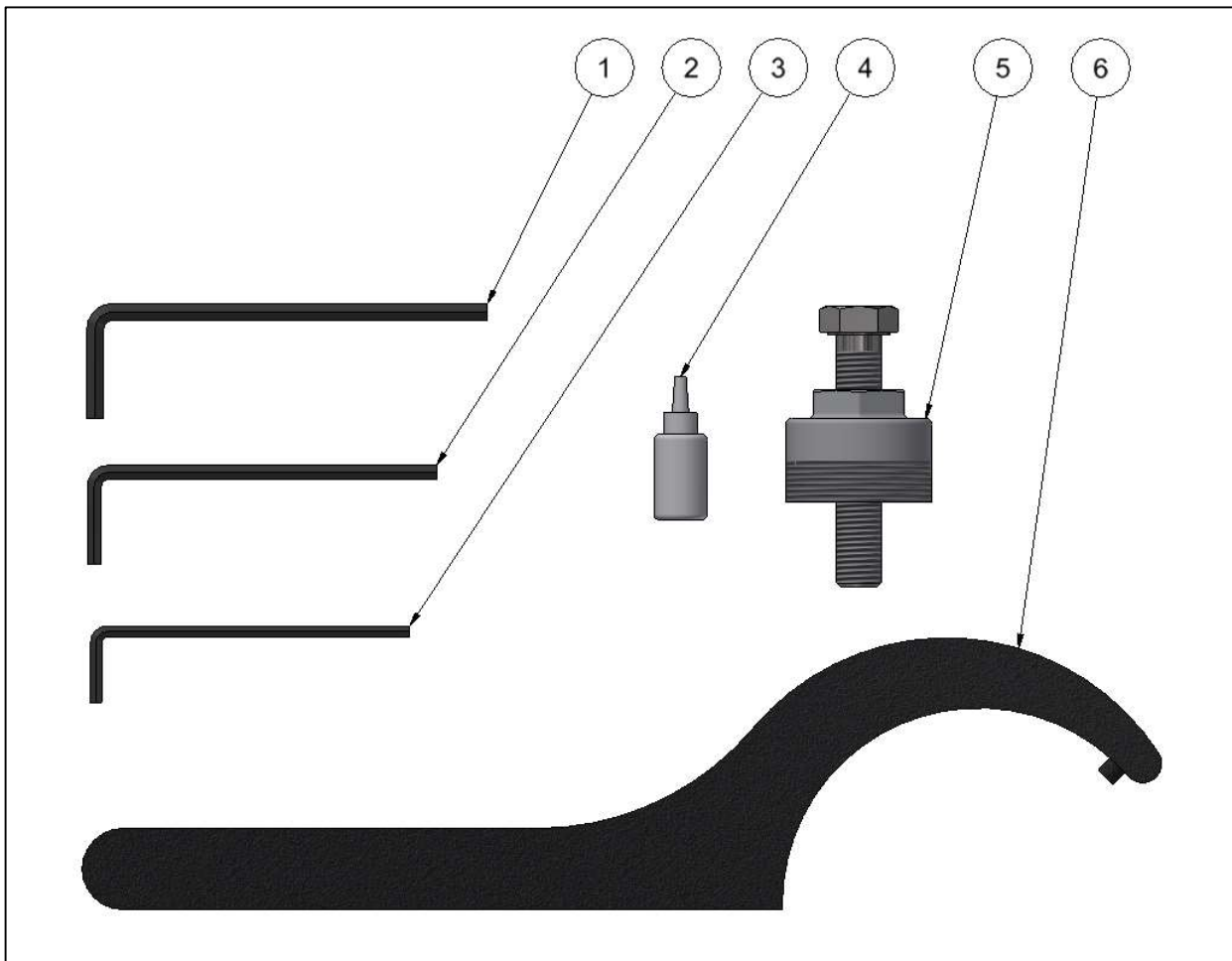
ITEM	DK	GB	DE	STOCK NUMBER	QTY
1	Navtop	Blade housing	Nabenoberteil	3500000095	1
2	Møtrik*	Nut*	Mütter*	---	1
3	Konusdel	Tapered part	Kegel	3400000095	1
4	Pinol skrue	Hex Socket Set Screw	Gewindestift	1401300000	3
5	Zinkanode	Zinc ring anode	Zinkring anode	1510550000	2
6	Undersænket skrue	Flat Countersunk Head	Senkskrue	1179910622	4
7	Nav kappe	Hub shell	Nabenschale	3300000095z	1
8	Skrue - cylindrisk hoved	Hex Socket Head	Cylinderskrue	1406800000	3
9	Skrue - cylindrisk hoved	Hex Socket Head	Cylinderskrue	1406900000	3
10	Aksel til propelblade	Blade pins	Führungsbolzen	1512000000	3
11	Gummistopper - Blå	Rubber stop - Blue	Gummianschläge - Blau	14075000SP	3
12	Afstandsskive	Spacer	Abstandshalter	1403000000	1
13	Tandhjul	Gear-wheel	Zahnrad	1407100000	1
14	Propelblade 18" x 10" LHS SP	Propeller blades 18" x 10" LHS SP	Propellerblätter 18" x 10" LHS SP	3118010012	3
14	Propelblade 18" x 11" LHS SP	Propeller blades 18" x 11" LHS SP	Propellerblätter 18" x 11" LHS SP	3118011012	3
14	Propelblade 18" x 12" RHS SP	Propeller blades 18" x 12" RHS SP	Propellerblätter 18" x 12" RHS SP	3118012011	3
14	Propelblade 18" x 12" LHS SP	Propeller blades 18" x 12" LHS SP	Propellerblätter 18" x 12" LHS SP	3118012012	3
14	Propelblade 18" x 13" RHS SP	Propeller blades 18" x 13" RHS SP	Propellerblätter 18" x 13" RHS SP	3118013011	3
14	Propelblade 18" x 13" LHS SP	Propeller blades 18" x 13" LHS SP	Propellerblätter 18" x 13" LHS SP	3118013012	3
14	Propelblade 18" x 14" RHS SP	Propeller blades 18" x 14" RHS SP	Propellerblätter 18" x 14" RHS SP	3118014011	3
14	Propelblade 18" x 14" LHS SP	Propeller blades 18" x 14" LHS SP	Propellerblätter 18" x 14" LHS SP	3118014012	3
14	Propelblade 18" x 15" RHS SP	Propeller blades 18" x 15" RHS SP	Propellerblätter 18" x 15" RHS SP	3118015011	3
14	Propelblade 18" x 15" LHS SP	Propeller blades 18" x 15" LHS SP	Propellerblätter 18" x 15" LHS SP	3118015012	3
14	Propelblade 19" x 14" RHS SP	Propeller blades 19" x 14" RHS SP	Propellerblätter 19" x 14" RHS SP	3119014011	3
14	Propelblade 19" x 14" LHS SP	Propeller blades 19" x 14" LHS SP	Propellerblätter 19" x 14" LHS SP	3119014012	3
14	Propelblade 19" x 15" RHS SP	Propeller blades 19" x 15" RHS SP	Propellerblätter 19" x 15" RHS SP	3119015011	3
14	Propelblade 19" x 15" LHS SP	Propeller blades 19" x 15" LHS SP	Propellerblätter 19" x 15" LHS SP	3119015012	3
14	Propelblade 20" x 10" RHS SP	Propeller blades 20" x 10" RHS SP	Propellerblätter 20" x 10" RHS SP	3120010011	3
14	Propelblade 20" x 12" RH SP	Propeller blades 20" x 12" RH SP	Propellerblätter 20" x 12" RH SP	3120012001SP	3
14	Propelblade 20" x 12" LHS SP	Propeller blades 20" x 12" LHS SP	Propellerblätter 20" x 12" LHS SP	3120012012	3
14	Propelblade 20" x 13" RHS SP	Propeller blades 20" x 13" RHS SP	Propellerblätter 20" x 13" RHS SP	3120013011	3
14	Propelblade 20" x 13" LHS SP	Propeller blades 20" x 13" LHS SP	Propellerblätter 20" x 13" LHS SP	3120013012	3
14	Propelblade 20" x 14" RHS SP	Propeller blades 20" x 14" RHS SP	Propellerblätter 20" x 14" RHS SP	3120014011	3
14	Propelblade 20" x 14" LHS SP	Propeller blades 20" x 14" LHS SP	Propellerblätter 20" x 14" LHS SP	3120014012	3
14	Propelblade 20" x 15" RHS SP	Propeller blades 20" x 15" RHS SP	Propellerblätter 20" x 15" RHS SP	3120015011	3
14	Propelblade 20" x 15" LHS SP	Propeller blades 20" x 15" LHS SP	Propellerblätter 20" x 15" LHS SP	3120015012	3
14	Propelblade 20" x 16" RHS SP	Propeller blades 20" x 16" RHS SP	Propellerblätter 20" x 16" RHS SP	3120016011	3
14	Propelblade 20" x 16" LHS SP	Propeller blades 20" x 16" LHS SP	Propellerblätter 20" x 16" LHS SP	3120016012	3
15	Låsebolt for aksel	Locking pin	Haltebolzen	1453000000	1
16	Pinolskrue M12 / M6	Hex Socket set screw M12 / M6	Gewindestift M12 / M6	1400700000	1
17	Cylinderstift	Parallel Pin	Zylinderstift	1406600000	1
18	Zinkanode - top	Zinc anode	Zink anode	1407300000	1
19	Skrue - cylindrisk hoved med indv. (	Hex Socket Head Screw	Zylinderschraube mit Innensechskant	1407000625	1

\*: Møtrik – bestilles kunde specifik; Nut – ordered custom specific; Mütter – kundenspezifisch bestellt

<b>Propeller: 18" - 20"</b>			
<b>Torque settings for Gori shaft nuts in Nm</b>			
	Norm Thread		Torque
	Diameter	Pitch	
	mm	mm	Nm
5/8"-11 UNC	15.5	2.31	52
M16 x 2	15.7	2	53
M16 x 1.5	15.7	1.5	57
3/4"-10 UNC	18.7	2.54	81
M20 x 2.5	19.6	2.5	91
M20 x 2	19.7	2	96
M20 x 1.5	19.7	1.5	102
7/8"-9 UNC	21,8	2.82	118
M24 x 3	23.6	3	135
M24 x 2	23.7	2	144

Thread has to be greased
No grease on taper on shaft

## Supplied Tools – (G)



18" – 20"

ITEM	DK	GB	DE	STOCK NUMBER
1	Unbrakonøgle - 6 mm	Allen key - 6 mm	Inbusschlüssel - 6 mm	1402200000
2	Unbrakonøgle - 5 mm	Allen key - 5 mm	Inbusschlüssel - 5 mm	1402100000
3	Unbrakonøgle - 4 mm	Allen key - 4 mm	Inbusschlüssel - 4 mm	1402000000
4	Gevindsikring	Threadlocking	Schraubensicherung	1410000000
5	Aftrækker	Puller	Abzieher	1527000000
6	Hagenøgle	C-Spanner	Hagenschlüssel	1406700000

17112023

Gori propeller A/S

Fjordagervej 34-36

DK-6100 Haderslev

[www.bsdk.com/gori-propeller/](http://www.bsdk.com/gori-propeller/)