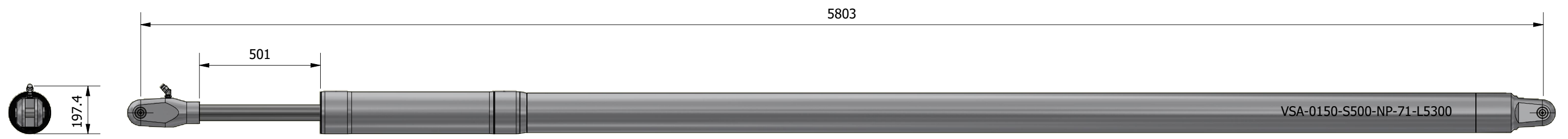
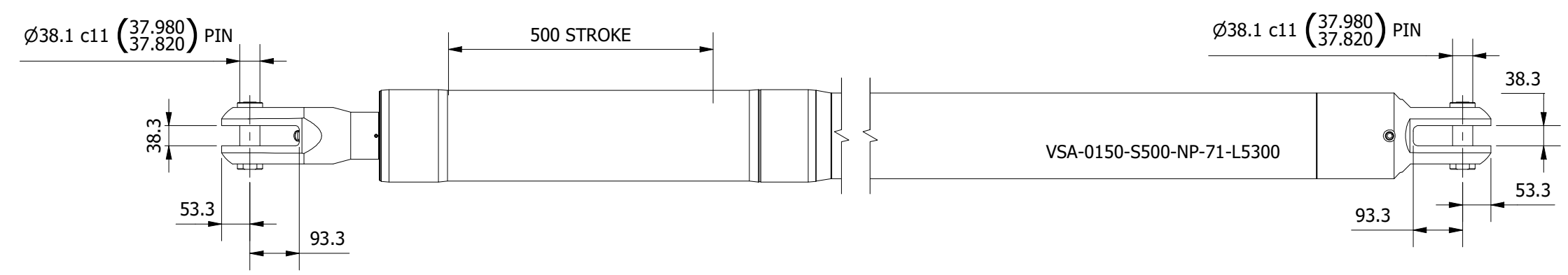
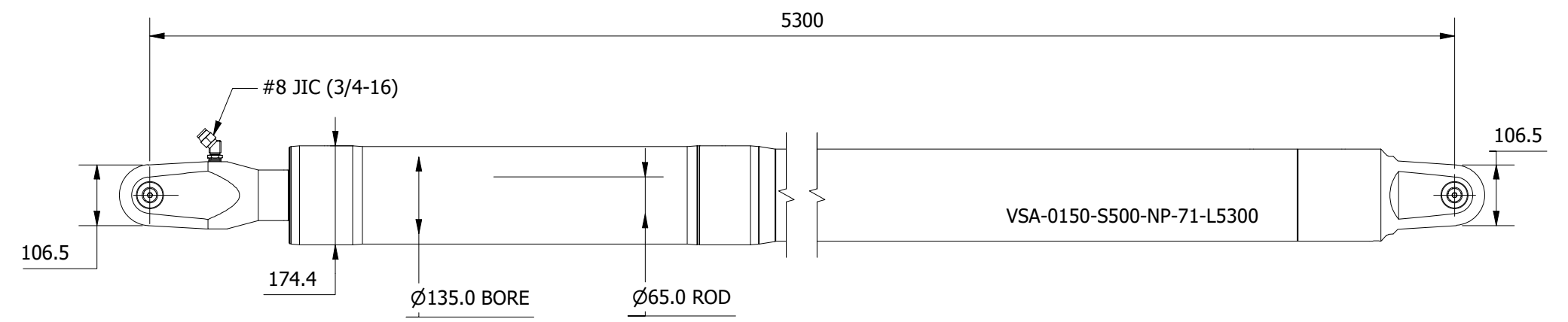



SIZE -0150  
 MAX PCLC 5300 mm  
 PIN / GAP 38.10 mm  
 BORE DIA 135 mm  
 ROD DIA 65 mm  
 STROKE 500 mm  
 WEIGHT (@4500MM PCLC) 178.83 Kg  
 FULL BORE AREA (PUSHING/EXTENDING) 14314 mm<sup>2</sup>  
 ANNULUS AREA (PULLING/RETRACTING) 10996 mm<sup>2</sup>  
 OIL DISPLACEMENT (ANNULUS SIDE) 5.50 ltrs  
 MAXIMUM PUSH FORCE @ 40 BAR 5836 Kg (57256 N)  
 PULL FORCE @ 150 BAR 16813 Kg (164934 N)  
 PULL FORCE @ 250 BAR 28021 Kg (274889 N)  
 MAX PULL FORCE @ 350 BAR (RELIEF) 39230 Kg (384845 N)



**NOTE: CUSTOM STROKES, LENGTHS AND CLEVIS DIMENSIONS AVAILABLE UPON REQUEST**

	Title ALUMINIUM SINGLE ACTING GAS RETURN VANG		Revision 1
	Drawing No. VSA-00150-S500-NP-71-L5300		Date Drawn 08/11/2021
	Tel: +44 (0)1202 596630 www.oms.ltd		By AL

© Copyright. All rights to this drawing and design are the sole property of OMS Ltd. This drawing must not be copied, communicated or loaned to any third party without the written consent of OMS Ltd.