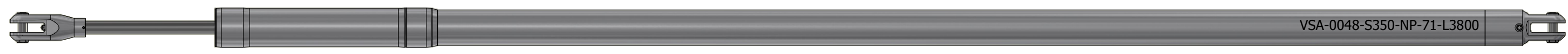
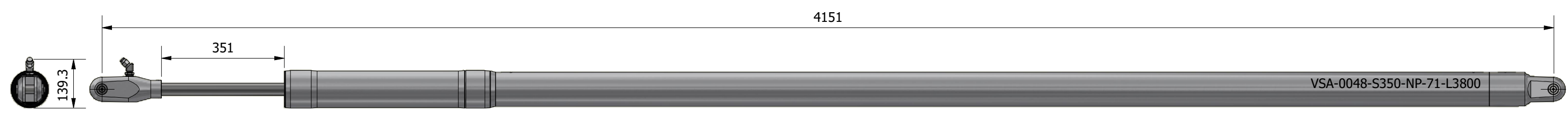
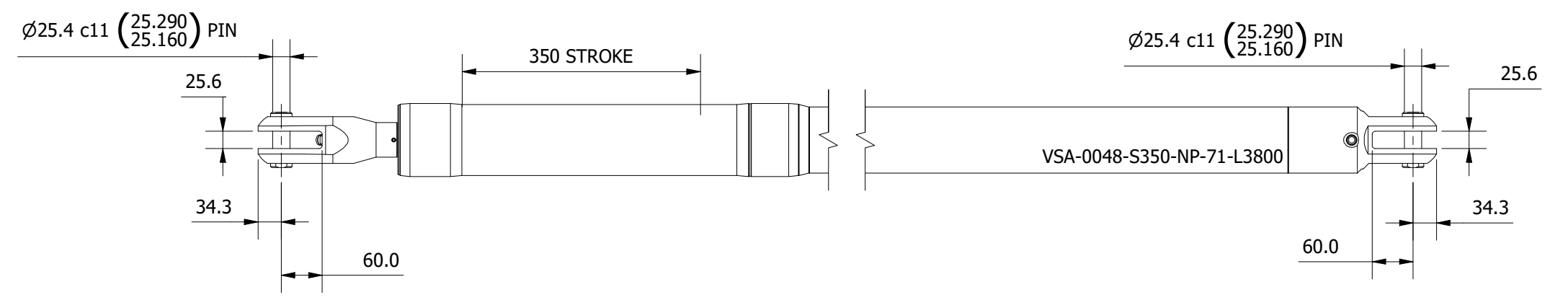
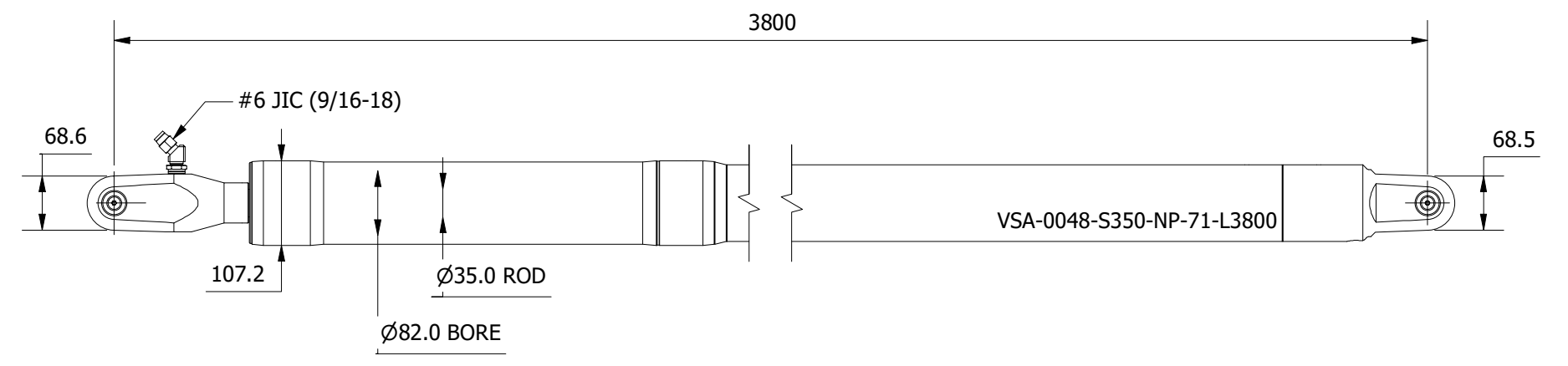


SIZE -0048  
 MAX PCLC 3800 mm  
 PIN / GAP 25.4 mm  
 BORE DIA 82 mm  
 ROD DIA 35 mm  
 STROKE 350 mm  
 WEIGHT (@4500MM PCLC) 42.42 Kg  
 FULL BORE AREA (PUSHING/EXTENDING) 5281 mm<sup>2</sup>  
 ANNULUS AREA (PULLING/RETRACTING) 4319 mm<sup>2</sup>  
 OIL DISPLACEMENT (ANNULUS SIDE) 1.51 ltrs  
 MAXIMUM PUSH FORCE @ 40 BAR 2153 Kg (21124 N)  
 PULL FORCE @ 150 BAR 6604 Kg (64784 N)  
 PULL FORCE @ 250 BAR 11006 Kg (107973 N)  
 MAX PULL FORCE @ 350 BAR (RELIEF) 15409 Kg (151162 N)



**NOTE: CUSTOM STROKES, LENGTHS AND CLEVIS DIMENSIONS AVAILABLE UPON REQUEST**

	Title ALUMINIUM SINGLE ACTING GAS RETURN VANG		Revision 1
	Drawing No. VSA-0048-S350-NP-71-L3800		Date Drawn 08/11/2021
	Tel: +44 (0)1202 596630 www.oms.ltd		By AL

© Copyright. All rights to this drawing and design are the sole property of OMS Ltd. This drawing must not be copied, communicated or loaned to any third party without the written consent of OMS Ltd.