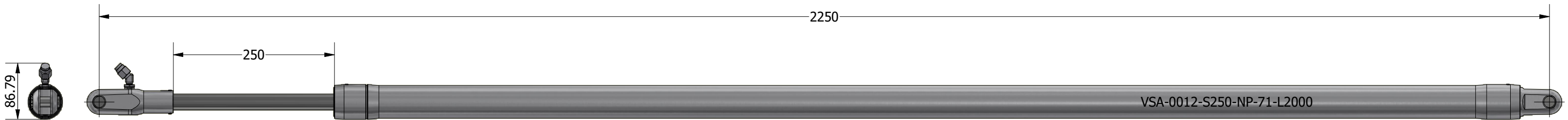
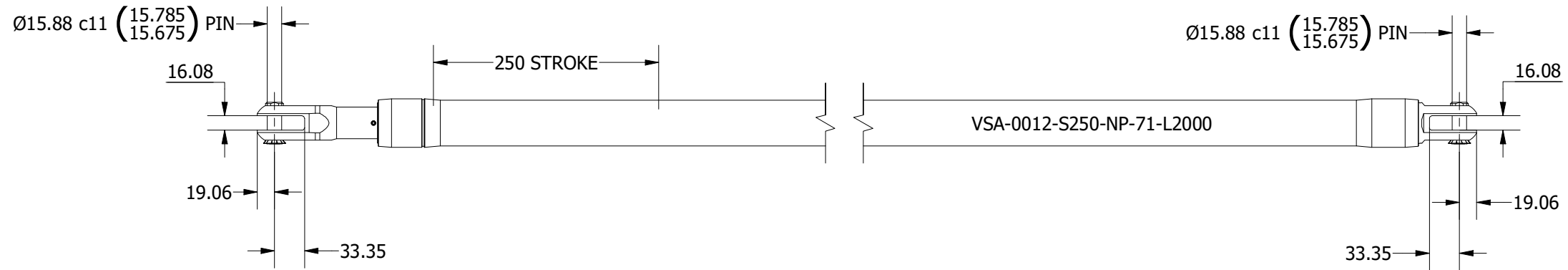
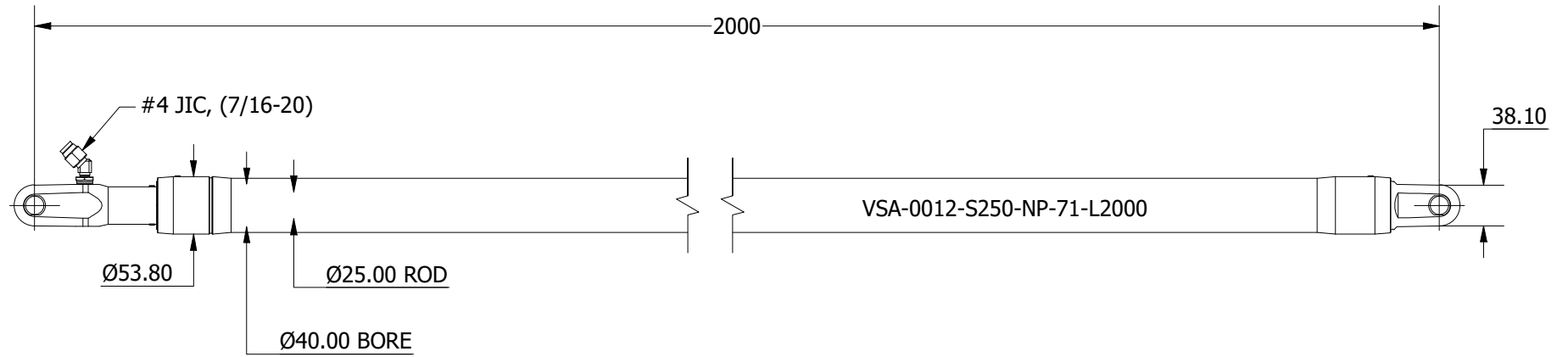


SIZE -0012
 MAX PCLC 2000 mm
 PIN / GAP 15.88 mm
 BORE DIA 40 mm
 ROD DIA 25 mm
 STROKE 250 mm
 WEIGHT (@2000mm PCLC) 6.19 Kg
 FULL BORE AREA (PUSHING/EXTENDING) 1257 mm²
 ANNULUS AREA (PULLING/RETRACTING) 766 mm²
 OIL DISPLACEMENT (ANNULUS SIDE) 0.19 ltrs
 MAXIMUM PUSH FORCE @ 40 BAR 512 Kg (5027 N)
 PULL FORCE @ 150 BAR 1171 Kg (11486 N)
 PULL FORCE @ 250 BAR 1951 Kg (19144 N)
 MAX PULL FORCE @ 350 BAR (RELIEF) 2732 Kg (26802 N)



NOTE: CUSTOM STROKES, LENGTHS AND CLEVIS DIMENSIONS AVAILABLE UPON REQUEST

	Title ALUMINIUM SINGLE ACTING GAS RETURN VANG		Revision 3
	Drawing No. VSA-0012-S250-NP-71-L2000		Date Drawn 05/11/2021
	Tel: +44 (0)1202 596630 www.oms.ltd		By AL

© Copyright. All rights to this drawing and design are the sole property of OMS Ltd. This drawing must not be copied, communicated or loaned to any third party without the written consent of OMS Ltd.