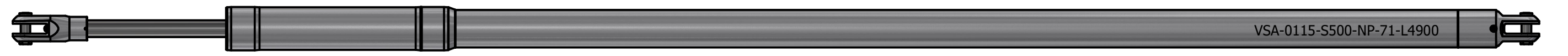
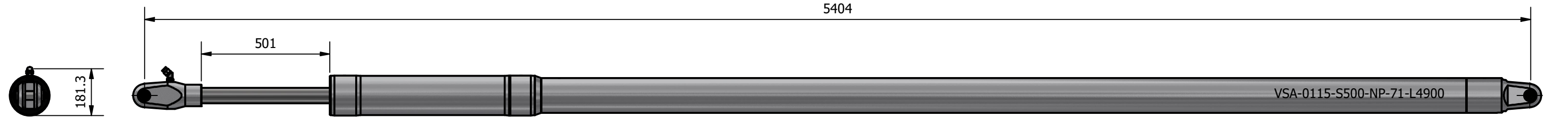
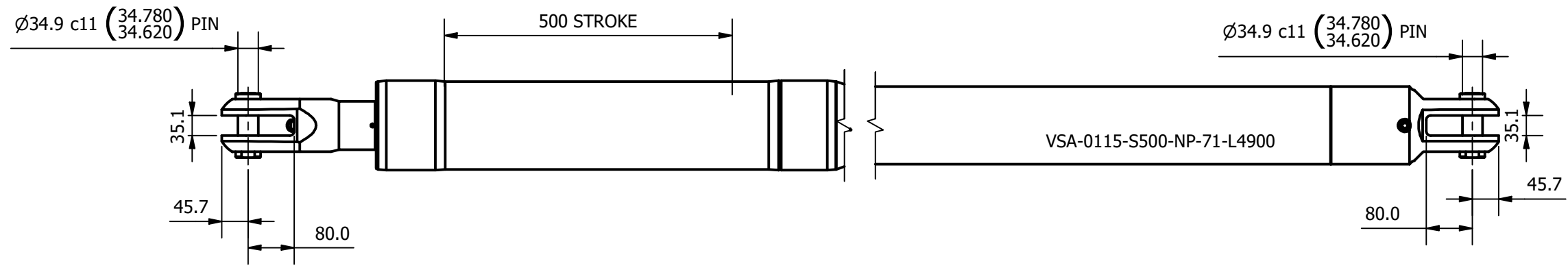
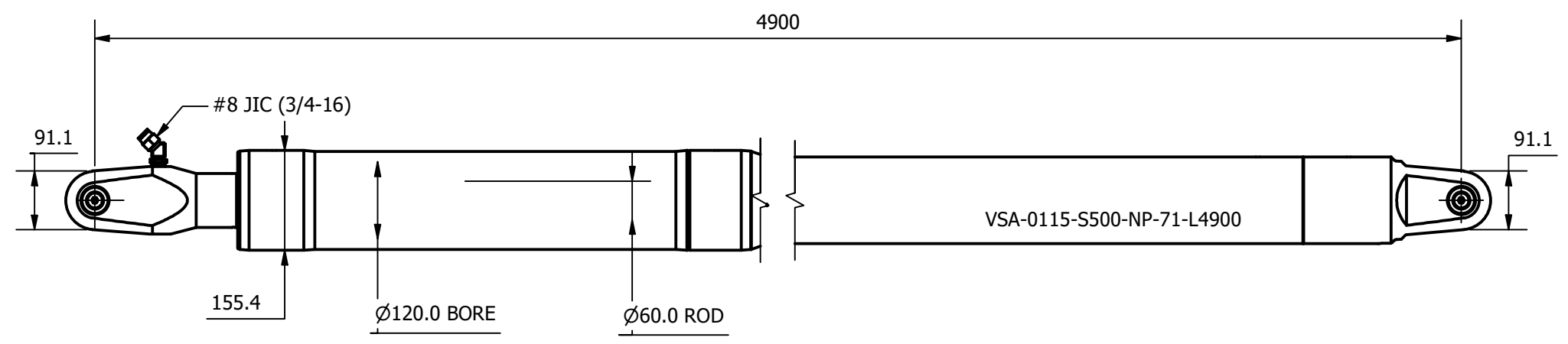



SIZE -0115
 MAX PCLC 4900 mm
 PIN / GAP 34.90 mm
 BORE DIA 120 mm
 ROD DIA 60 mm
 STROKE 500 mm
 WEIGHT (@4500MM PCLC) 114.29 Kg (1.68 Kg per 100mm PCLC)
 FULL BORE AREA (PUSHING/EXTENDING) 11310 mm²
 ANNULUS AREA (PULLING/RETRACTING) 8482 mm²
 OIL DISPLACEMENT (ANNULUS SIDE) 4.24 ltrs
 MAXIMUM PUSH FORCE @ 40 BAR 4612 Kg (45239 N)
 PULL FORCE @ 150 BAR 12970 Kg (127235 N)
 PULL FORCE @ 250 BAR 21616 Kg (212058 N)
 MAX PULL FORCE @ 350 BAR (RELIEF) 30263 Kg (296881 N)



NOTE: CUSTOM STROKES, LENGTHS AND CLEVIS DIMENSIONS AVAILABLE UPON REQUEST

	Title ALUMINIUM SINGLE ACTING GAS RETURN VANG		Revision 1
	Drawing No. VSA-00115-S500-NP-71-L4900		Date Drawn 08/11/2021
	Tel: +44 (0)1202 596630 www.oms.ltd		By AL

© Copyright. All rights to this drawing and design are the sole property of OMS Ltd. This drawing must not be copied, communicated or loaned to any third party without the written consent of OMS Ltd.