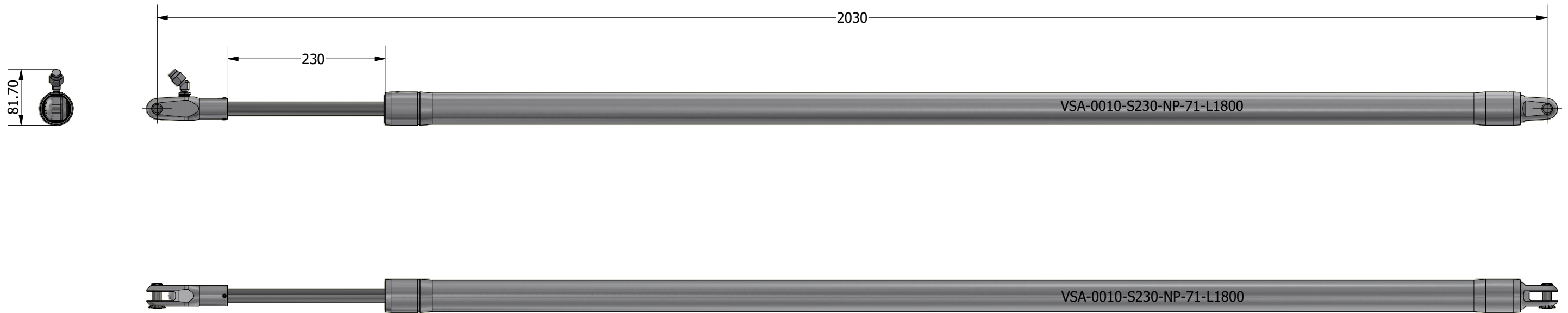
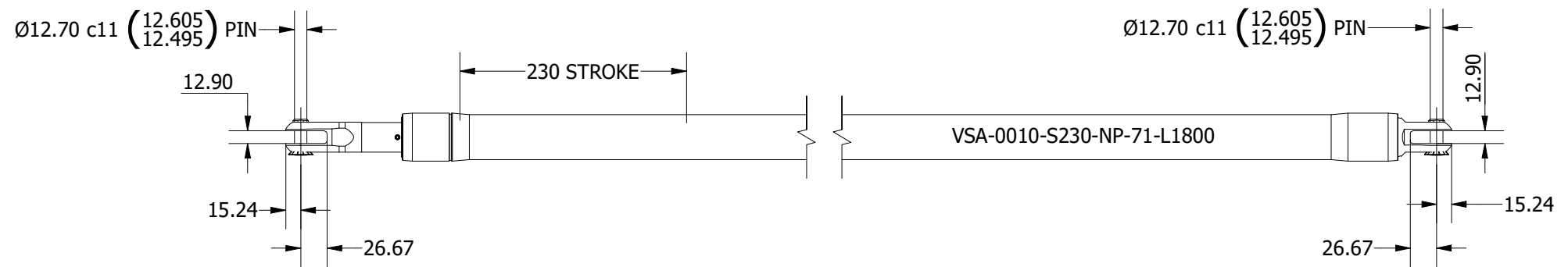
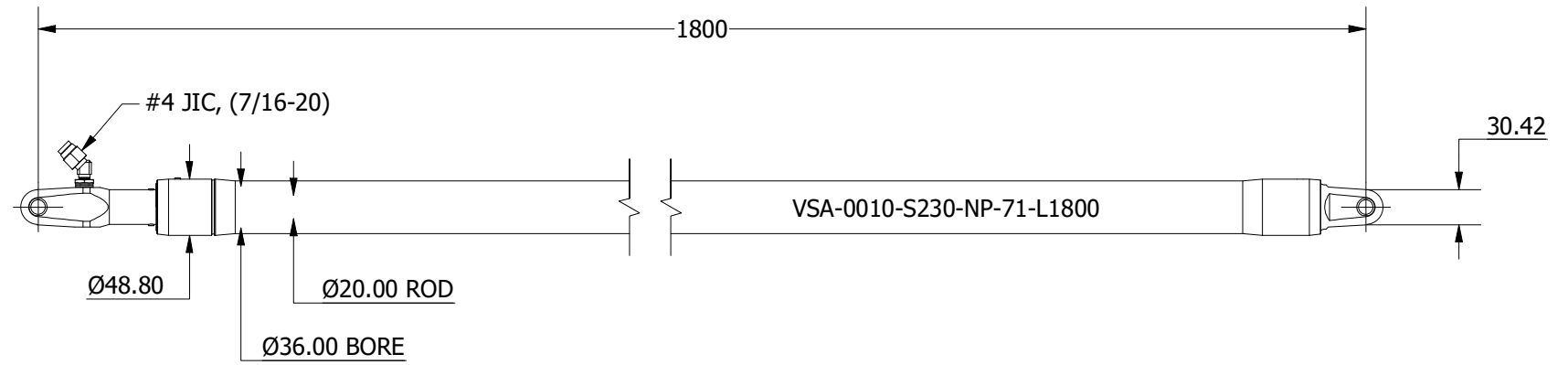
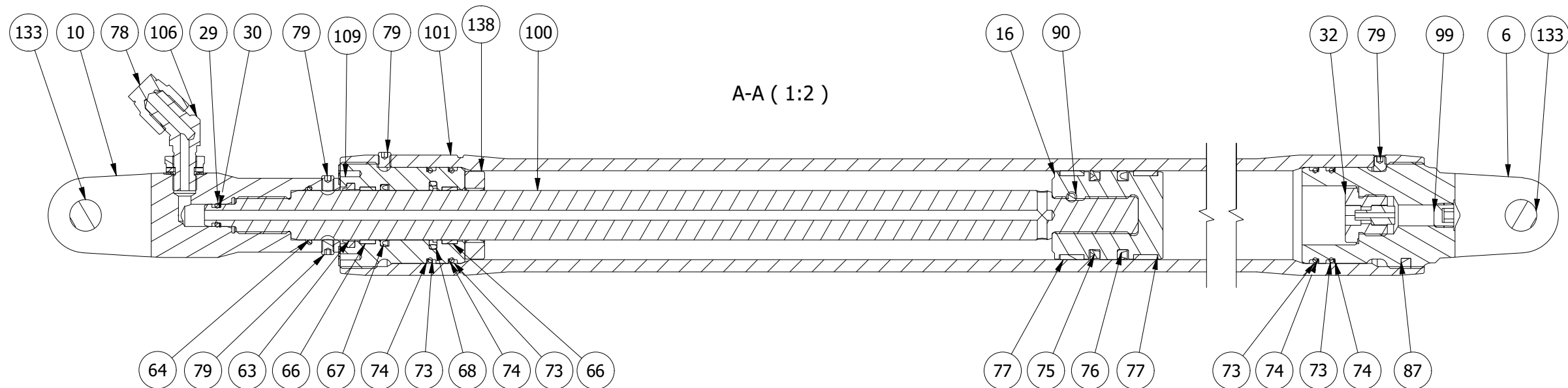
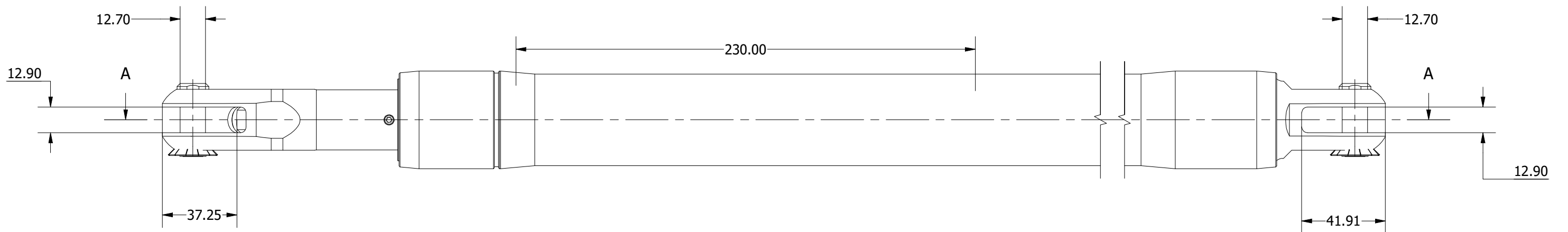
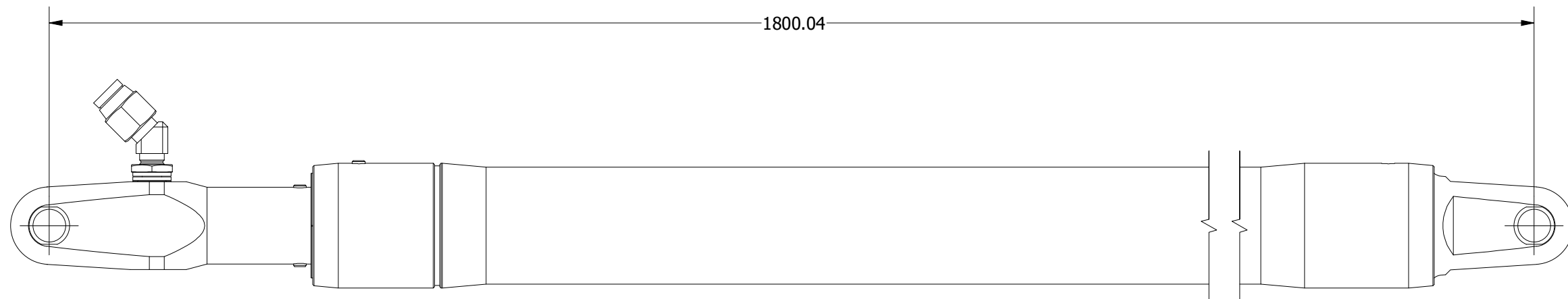



SIZE -0010  
 MAX PCLC 1800 mm  
 PIN / GAP 12.70 mm  
 BORE DIA 36 mm  
 ROD DIA 20 mm  
 STROKE 230 mm  
 WEIGHT (@1800mm PCLC) 4.34 Kg  
 FULL BORE AREA (PUSHING/EXTENDING) 1018 mm<sup>2</sup>  
 ANNULUS AREA (PULLING/RETRACTING) 704 mm<sup>2</sup>  
 OIL DISPLACEMENT (ANNULUS SIDE) 0.16 ltrs  
 MAXIMUM PUSH FORCE @ 40 BAR 415 Kg (4072 N)  
 PULL FORCE @ 150 BAR 1076 Kg (10556 N)  
 PULL FORCE @ 250 BAR 1793 Kg (17593 N)  
 MAX PULL FORCE @ 350 BAR (RELIEF) 2511 Kg (24630 N)



**NOTE: CUSTOM STROKES, LENGTHS AND CLEVIS DIMENSIONS AVAILABLE UPON REQUEST**

	Title ALUMINIUM SINGLE ACTING GAS RETURN VANG		Revision 3
	Drawing No. VSA-0010-S230-NP-71-L1800		Date Drawn 05/11/2021 By AL
	Tel: +44 (0)1202 596630 www.oms.ltd		© Copyright. All rights to this drawing and design are the sole property of OMS Ltd. This drawing must not be copied, communicated or loaned to any third party without the written consent of OMS Ltd.



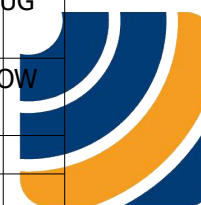
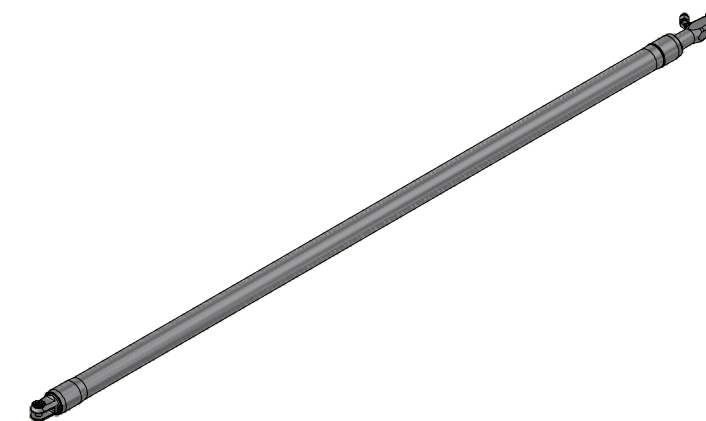
	<b>OMS</b> Ocean Marine Systems		Title <b>ALUMINIUM SINGLE ACTING GAS RETURN VANG</b>	Revision <b>3</b>
	Drawing No. <b>VSA-0010-S230-NP-71-L1800</b>		Date Drawn <b>05/11/2021</b>	By <b>AL</b>
	Tel: +44 (0)1202 596630 <a href="http://www.oms.ltd">www.oms.ltd</a>		© Copyright. All rights to this drawing and design are the sole property of OMS Ltd. This drawing must not be copied, communicated or loaned to any third party without the written consent of OMS Ltd.	

**ASSEMBLY**

ITEM	QTY	PART NUMBER	DESCRIPTION	REVISION NUMBER
76	1	SLG-SU36-28-4-R	RUBBER U CUP SEAL	
30	1	SLAE-200-010	ANTI EXTRUSION RING	
29	1	SLO-200-010	O-RING	
79	4	GRBAH-M05-006	GRUB SCREW	
68	1	SLP-CS60200-1B	ROD SEAL	
73	4	SLO-200-028	O-RING	
106	1	HCN-MMPE-1-8-BSPP-7-16-JIC-45DEG-SS	HYDRAULIC MALE MALE POSITIONAL 45 DEGREE ELBOW 1/8" BSPP TO 7/16"-20 JIC STAINLESS STEEL	
99	1	HCN-SPLG-1-8-NPT-AL	HYDRAULIC MALE SOCKET HEADED TAPERED PIPE PLUG 1/8" NPT BLUE ANODISED ALUMINIUM	
78	1	HCN-SCAP-7-16-JIC-SS	HYDRAULIC SWIVEL CAP 7/16-20 JIC STAINLESS STEEL	
77	2	SLS-BR36-32-9.7	SOLID BEARING RING	
75	1	SLP-SU36-28-4-P	POLYURETHANE U CUP SEAL	
74	4	SLAE-200-028	ANTI EXTRUSION RING	
67	1	SLG-SU25-20-3-R	RUBBER U CUP SEAL	
66	2	SLS-BT-15063-66-R	BEARING TAPE	
64	1	SLO-200-019	O-RING	
63	1	SLW-WR20-26-3-5M-R	ROD WIPER SEAL	
10	1	TFK-A-0010-VSA-71	TOP FORK	1
16	1	PIS-A-0010-VSA-71	PISTON	1
6	1	BFK-A-0010-VSA-71	BOTTOM FORK	1
101	1	CYL-A-0010-VSA-0250-71-L1800	CYLINDER	1
100	1	ROD-D-0010-VSD-0230-71	PISTON ROD	2
90	1	PPN-A-0010-R-71	PISTON PIN	C
87	1	PLG-P-04-10	PLUG	A
32	1	PCN-CHK-ASM-3-8-BSPP-SS-01	PNEUMATIC CHECK VALVE ASSEMBLY	A
109	1	GLH-A-0010-V-71	GLAND HOUSING	2
126	1	CGS-P-0010-V-71	COVER GLAND STICKER	3
133	2	CLPA-S-0010-0030-V-71	CLEVIS PIN ASSEMBLY	1
138	1	SPA-A-0010-V-71	SPACER	1

**SERVICE PARTS**

ITEM	QTY	PART NUMBER	DESCRIPTION
29	1	SLO-200-010	O-RING
30	1	SLAE-200-010	ANTI EXTRUSION RING
32	1	PCN-CHK-ASM-3-8-BSPP-SS-01	PNEUMATIC CHECK VALVE ASSEMBLY
63	1	SLW-WR20-26-3-5M-R	ROD WIPER SEAL
64	1	SLO-200-019	O-RING
66	2	SLS-BT-15063-66-R	BEARING TAPE
67	1	SLG-SU25-20-3-R	RUBBER U CUP SEAL
68	1	SLP-CS60200-1B	ROD SEAL
73	4	SLO-200-028	O-RING
74	4	SLAE-200-028	ANTI EXTRUSION RING
75	1	SLP-SU36-28-4-P	POLYURETHANE U CUP SEAL
76	1	SLG-SU36-28-4-R	RUBBER U CUP SEAL
77	2	SLS-BR36-32-9.7	SOLID BEARING RING
78	1	HCN-SCAP-7-16-JIC-SS	HYDRAULIC SWIVEL CAP 7/16-20 JIC STAINLESS STEEL
79	4	GRBAH-M05-006	GRUB SCREW
87	1	PLG-P-04-10	PLUG
99	1	HCN-SPLG-1-8-NPT-AL	HYDRAULIC MALE SOCKET HEADED TAPERED PIPE PLUG 1/8" NPT BLUE ANODISED ALUMINIUM
106	1	HCN-MMPE-1-8-BSPP-7-16-JIC-45DEG-SS	HYDRAULIC MALE MALE POSITIONAL 45 DEGREE ELBOW 1/8" BSPP TO 7/16"-20 JIC STAINLESS STEEL
109	1	GLH-A-0010-V-71	GLAND HOUSING
126	1	CGS-P-0010-V-71	COVER GLAND STICKER
133	2	CLPA-S-0010-0030-V-71	CLEVIS PIN ASSEMBLY



**OMS**  
Ocean Marine Systems

Title <b>ALUMINIUM SINGLE ACTING GAS RETURN VANG</b>		Revision <b>3</b>
Drawing No. <b>VSA-0010-S230-NP-71-L1800</b>	Date Drawn <b>05/11/2021</b>	By <b>AL</b>
Tel: +44 (0)1202 596630 www.oms.ltd		© Copyright. All rights to this drawing and design are the sole property of OMS Ltd. This drawing must not be copied, communicated or loaned to any third party without the written consent of OMS Ltd.