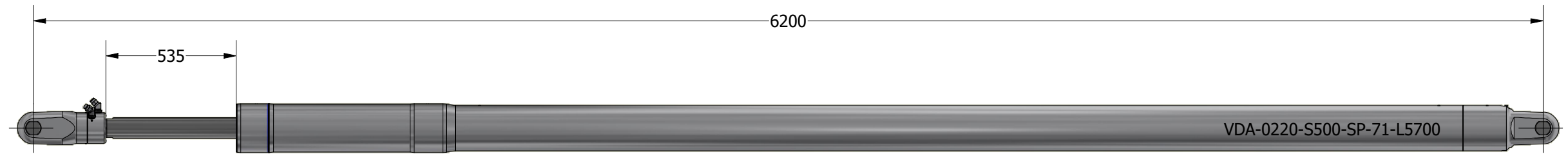
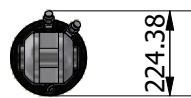
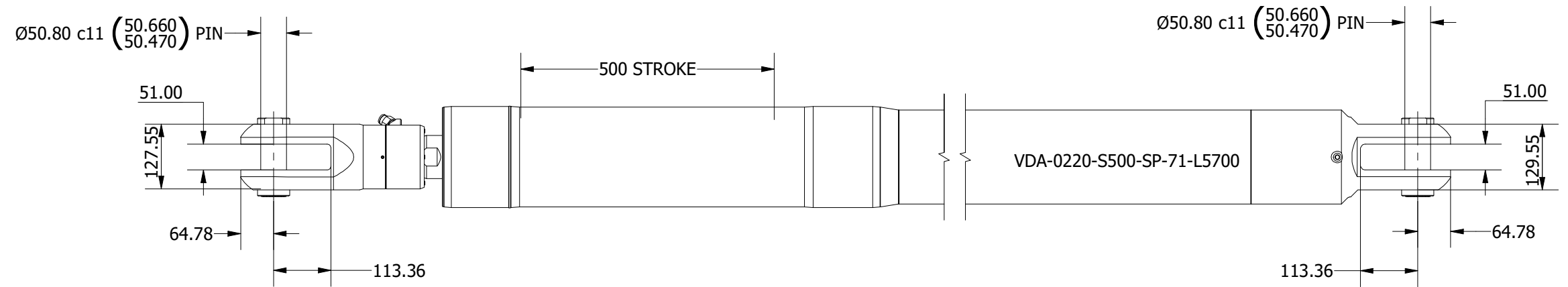
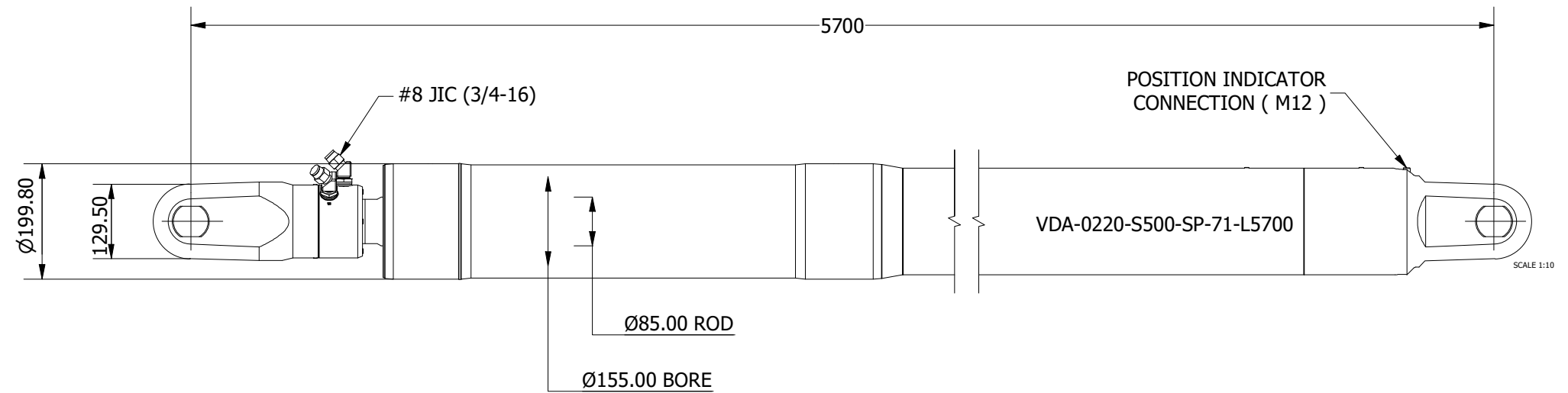


SIZE -0220
 MAX PCLC 5700 mm
 PIN / GAP 50.80 mm
 BORE DIA 155 mm
 ROD DIA 80 mm
 STROKE 500 mm
 ESTIMATED WEIGHT (@5700mm PCLC) 268.0 Kg
 FULL BORE AREA (PUSHING/EXTENDING) 18869 mm²
 ANNULUS AREA (PULLING/RETRACTING) 13195 mm²
 OIL DISPLACEMENT (FULL BORE SIDE) 9.43 ltrs
 OIL DISPLACEMENT (ANNULUS SIDE) 6.60 ltrs
 MAXIMUM PUSH RELIEF @ 75 BAR 14426 Kg (141519 N)
 PULL FORCE @ 150 BAR 20175 Kg (197920 N)
 PULL FORCE @ 250 BAR 33626 Kg (329867 N)
 MAXIMUM PULL RELIEF @ 350 BAR 47076 Kg (461814 N)

PI SIGNAL = 4-20mA



NOTE: CUSTOM STROKES, LENGTHS AND CLEVIS DIMENSIONS AVAILABLE UPON REQUEST

| | | | |
|---|--|--|--------------------------|
|  | Title ALUMINIUM DOUBLE ACTING VANG | | Revision 2 |
| | Drawing No. VDA-0220-S500-SP-71-L5700 | | Date Drawn 10/11/2021 |
| | Tel: +44 (0)1202 596630 www.oms.ltd | | By AL |

© Copyright. All rights to this drawing and design are the sole property of OMS Ltd. This drawing must not be copied, communicated or loaned to any third party without the written consent of OMS Ltd.