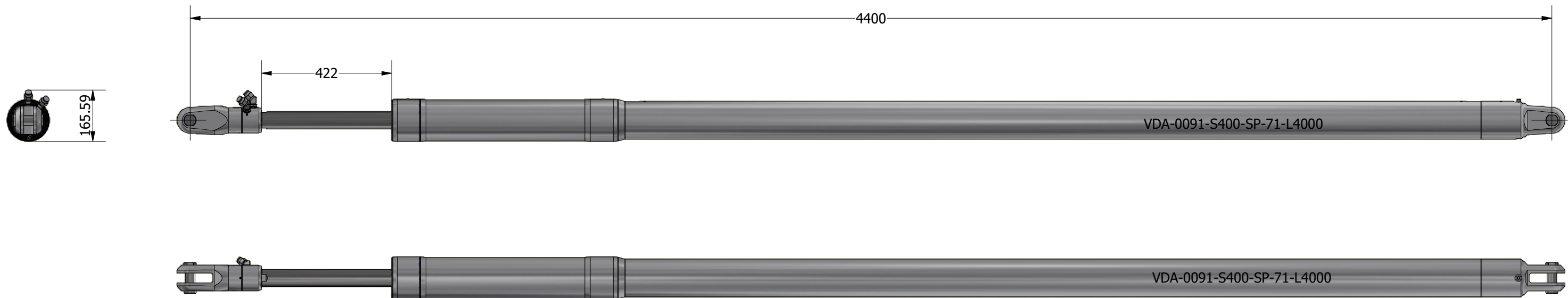
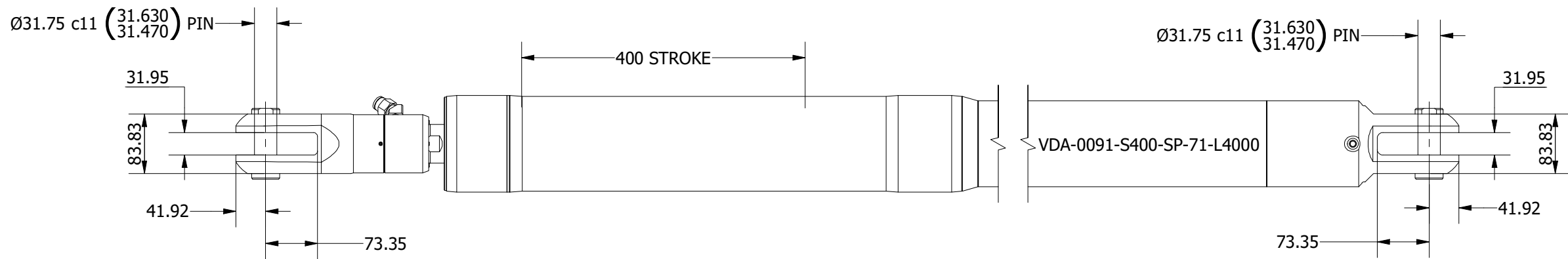
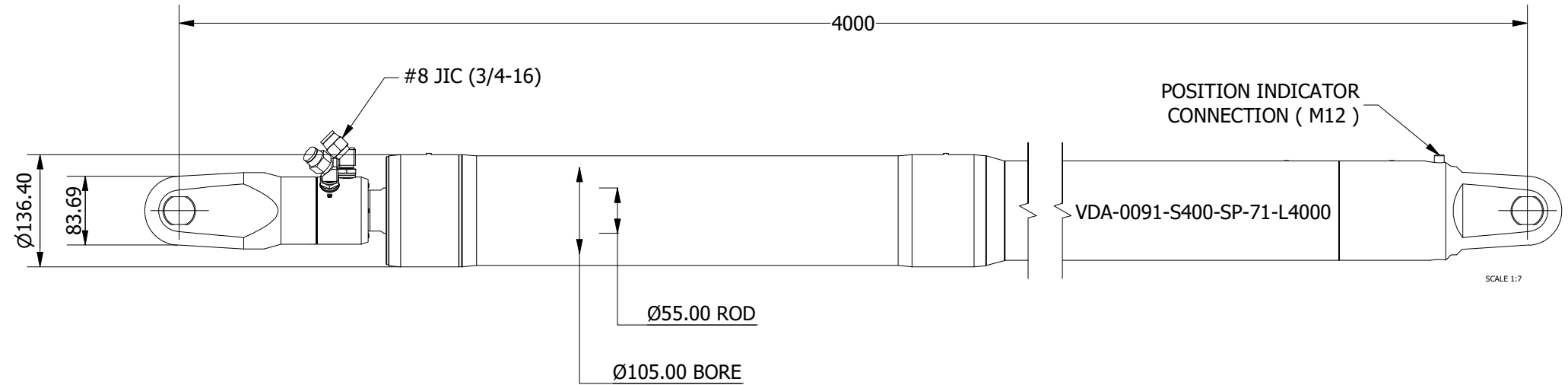


SIZE -0091
 MAX PCLC 4000 mm
 PIN / GAP 31.75 mm
 BORE DIA 105 mm
 ROD DIA 55 mm
 STROKE 400 mm
 ESTIMATED WEIGHT (@4000mm PCLC) 73.0 Kg
 FULL BORE AREA (PUSHING/EXTENDING) 8659 mm²
 ANNULUS AREA (PULLING/RETRACTING) 6283 mm²
 OIL DISPLACEMENT (FULL BORE SIDE) 3.46 ltrs
 OIL DISPLACEMENT (ANNULUS SIDE) 2.51 ltrs
 MAXIMUM PUSH RELIEF @ 75 BAR 6620 Kg (64943 N)
 PULL FORCE @ 150 BAR 9607 Kg (94248 N)
 PULL FORCE @ 250 BAR 16012 Kg (157080 N)
 MAXIMUM PULL RELIEF @ 350 BAR 22417 Kg (219911 N)

PI SIGNAL = 4-20mA



NOTE: CUSTOM STROKES, LENGTHS AND CLEVIS DIMENSIONS AVAILABLE UPON REQUEST

	Title ALUMINIUM DOUBLE ACTING VANG		Revision 2
	Drawing No. VDA-0091-S400-SP-71-L4000		Date Drawn 09/11/2021
	Tel: +44 (0)1202 596630 www.oms.ltd		By AL

© Copyright. All rights to this drawing and design are the sole property of OMS Ltd. This drawing must not be copied, communicated or loaned to any third party without the written consent of OMS Ltd.