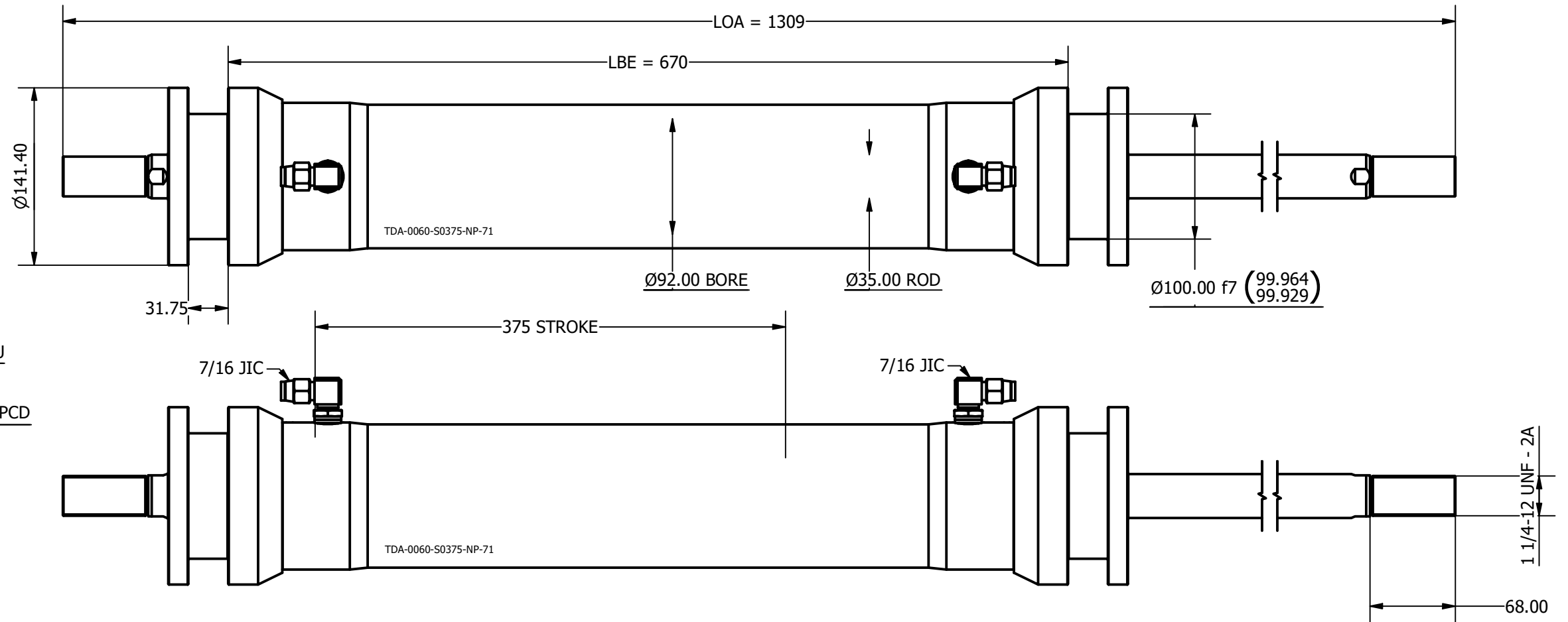


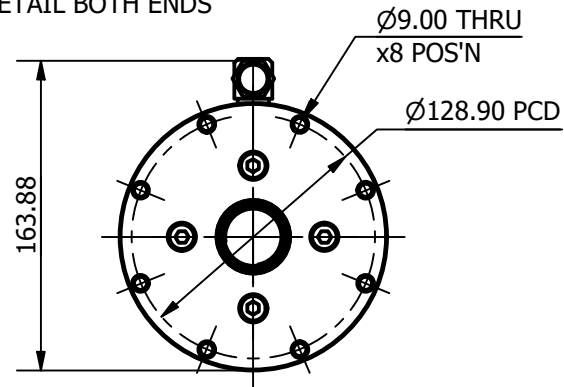
SIZE	-0060
LENGTH	1309 mm
ROD THREAD	1 1/4-12 UNF
BORE DIA	92 mm
ROD DIA	35 mm
STROKE	375 mm
WEIGHT	24.049 Kg
ANNULUS AREA (PULLING/RETRACTING)	5685 mm ²
OIL DISPLACEMENT	4.26 ltrs
PULL FORCE @ 150 BAR	8693 Kg (85282 N)
PULL FORCE @ 250 BAR	14489 Kg (142137 N)
MAX PULL FORCE @ 350 BAR (RELIEF)	20285 Kg (198992 N)

NOTE:

1. CUSTOM VARIATIONS AND ROD THREADS ARE AVAIBALE ON REQUEST
2. ATTACHMENT METHOD CUSTOMISABLE ON REQUEST



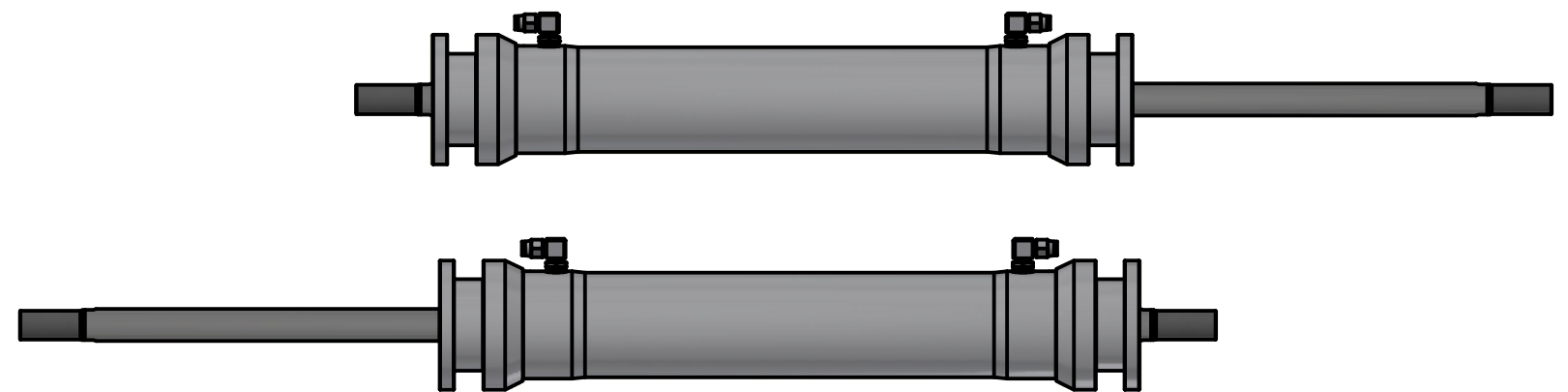
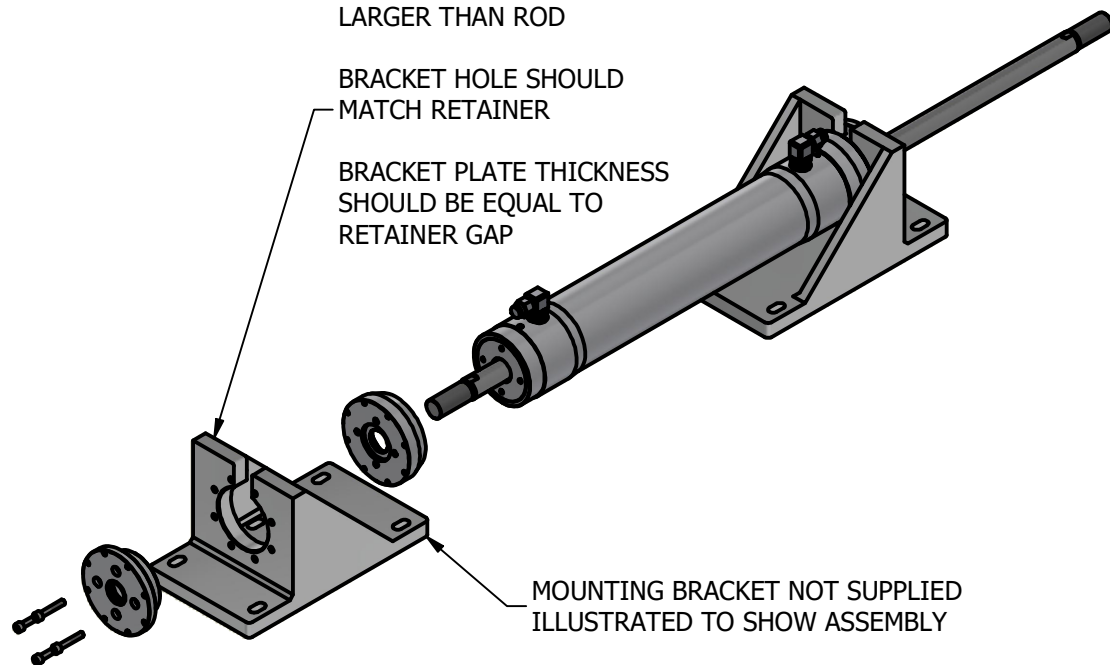
SAME MOUNTING
DETAIL BOTH ENDS



TOP SLOT SHOULD BE
LARGER THAN ROD

BRACKET HOLE SHOULD
MATCH RETAINER

BRACKET PLATE THICKNESS
SHOULD BE EQUAL TO
RETAINER GAP



OMS
Ocean Marine Systems

Title ALUMINIUM DOUBLE PULL TRAVELLER CYLINDER		Revision 1
Drawing No. TDA-0060-S0375-NP-71		Date Drawn 02/11/2021
Tel: +44 (0)1202 596630 www.oms.ltd		By AL
© Copyright. All rights to this drawing and design are the sole property of OMS Ltd. This drawing must not be copied, communicated or loaned to any third party without the written consent of OMS Ltd.		