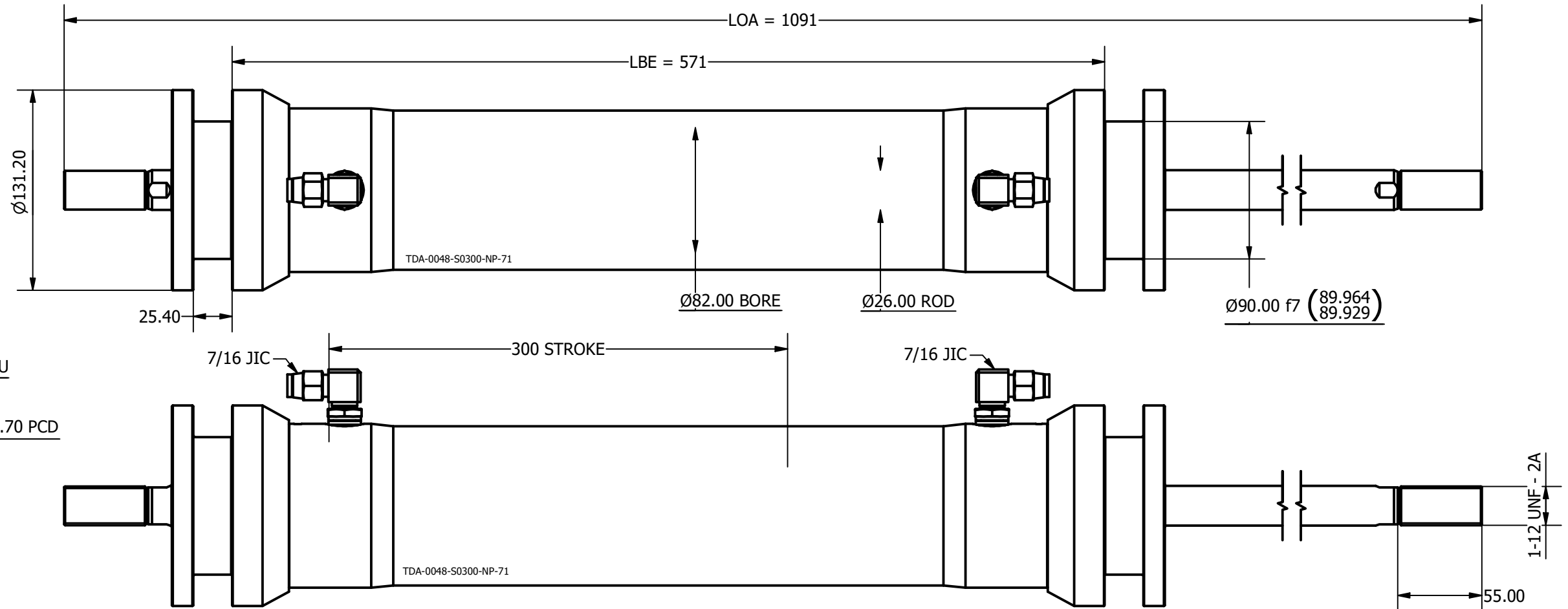


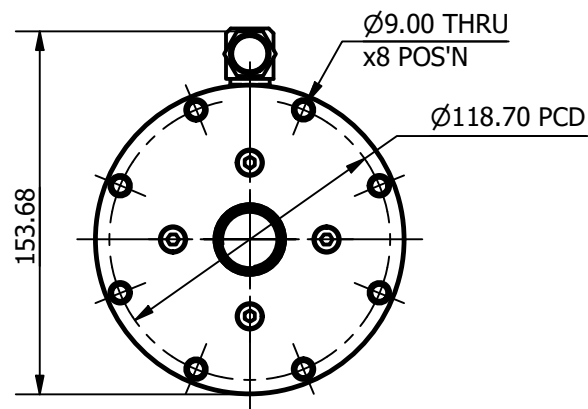
SIZE	-0048
LENGTH	1091 mm
ROD THREAD	1-12 UNF
BORE DIA	82 mm
ROD DIA	26 mm
STROKE	300 mm
WEIGHT	15.331 Kg
ANNULUS AREA (PULLING/RETRACTING)	4750 mm <sup>2</sup>
OIL DISPLACEMENT	2.85 ltrs
PULL FORCE @ 150 BAR	7263 Kg (71251 N)
PULL FORCE @ 250 BAR	12105 Kg (118752 N)
MAX PULL FORCE @ 350 BAR (RELIEF)	16947 Kg (166253 N)

**NOTE:**

1. CUSTOM VARIATIONS AND ROD THREADS ARE AVAIBALE ON REQUEST
2. ATTACHMENT METHOD CUSTOMISABLE ON REQUEST



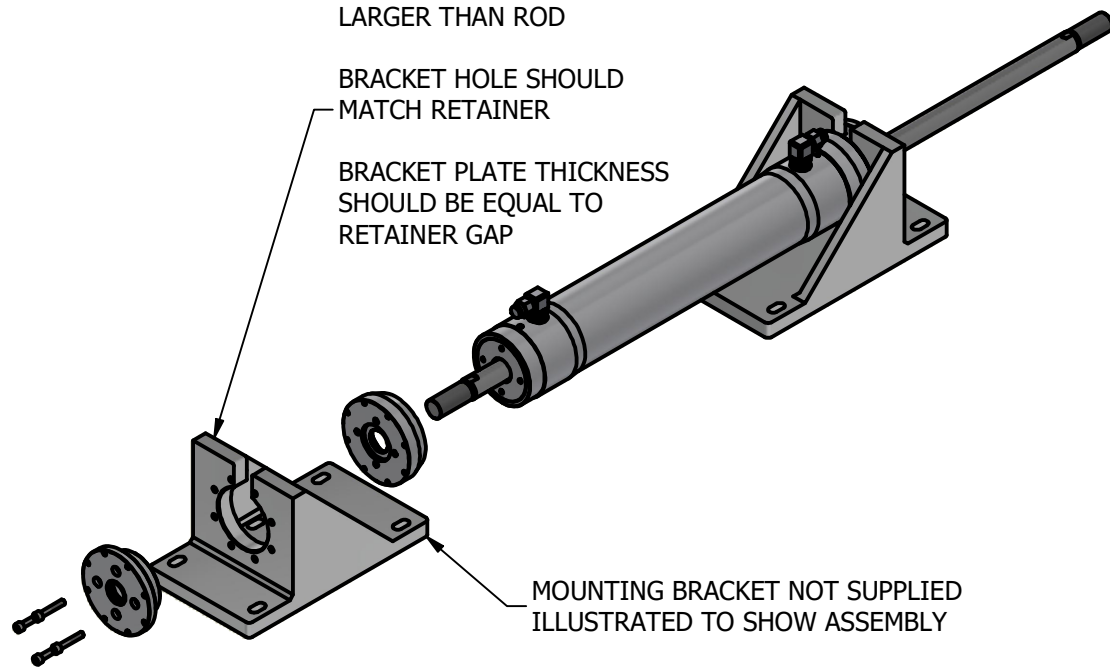
SAME MOUNTING  
DETAIL BOTH ENDS



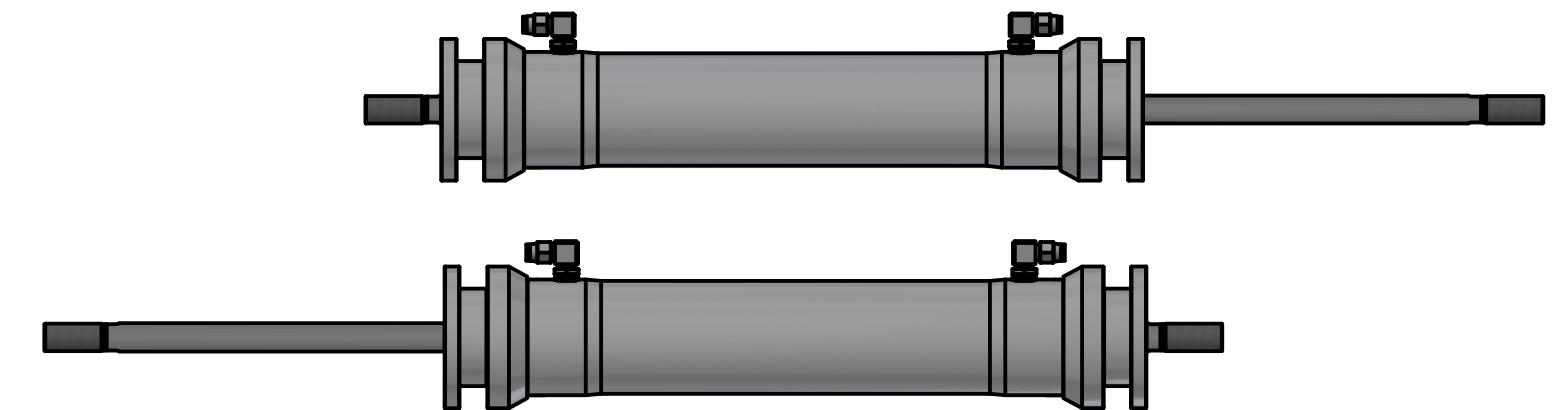
TOP SLOT SHOULD BE  
LARGER THAN ROD

BRACKET HOLE SHOULD  
MATCH RETAINER

BRACKET PLATE THICKNESS  
SHOULD BE EQUAL TO  
RETAINER GAP



MOUNTING BRACKET NOT SUPPLIED  
ILLUSTRATED TO SHOW ASSEMBLY



	Title ALUMINIUM DOUBLE PULL TRAVELLER CYLINDER		Revision 1
	Drawing No. TDA-0048-S0300-NP-71		Date Drawn 02/11/2021
	Tel: +44 (0)1202 596630 www.oms.ltd		By AL

© Copyright. All rights to this drawing and design are the sole property of OMS Ltd. This drawing must not be copied, communicated or loaned to any third party without the written consent of OMS Ltd.