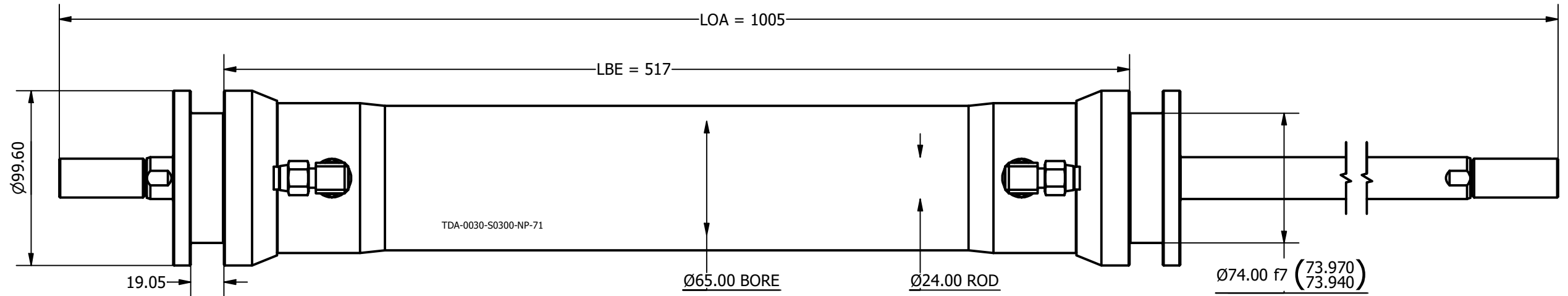


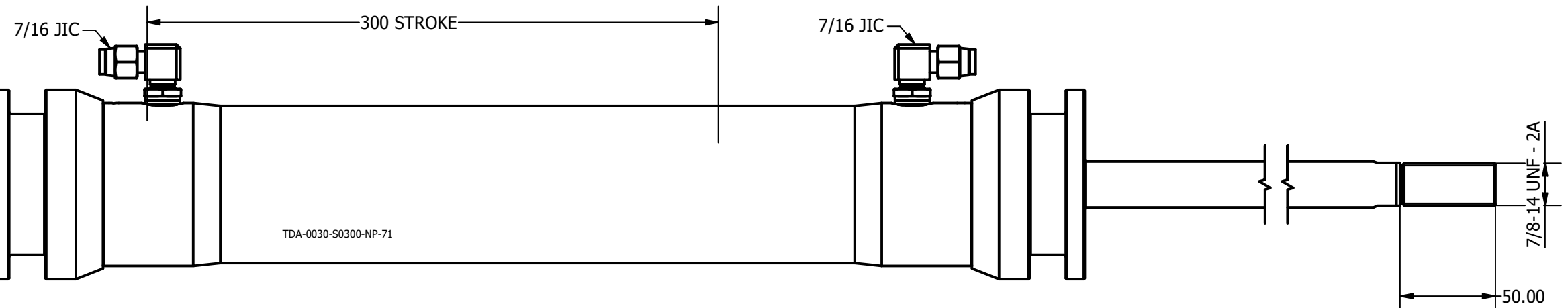
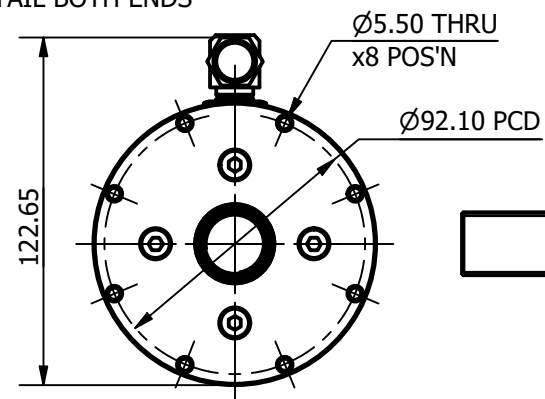
SIZE -0030  
 LENGTH 1005 mm  
 ROD THREAD 7/8-14 UNF  
 BORE DIA 65 mm  
 ROD DIA 24 mm  
 STROKE 300 mm  
 WEIGHT 9.127 Kg  
 ANNULUS AREA (PULLING/RETRACTING) 2866 mm<sup>2</sup>  
 OIL DISPLACEMENT 1.72 ltrs  
 PULL FORCE @ 150 BAR 4382 Kg (42989 N)  
 PULL FORCE @ 250 BAR 7304 Kg (71648 N)  
 MAX PULL FORCE @ 350 BAR (RELIEF) 10225 Kg (100307 N)

**NOTE:**

1. CUSTOM VARIATIONS AND ROD THREADS ARE AVAIBALE ON REQUEST
2. ATTACHMENT METHOD CUSTOMISABLE ON REQUEST



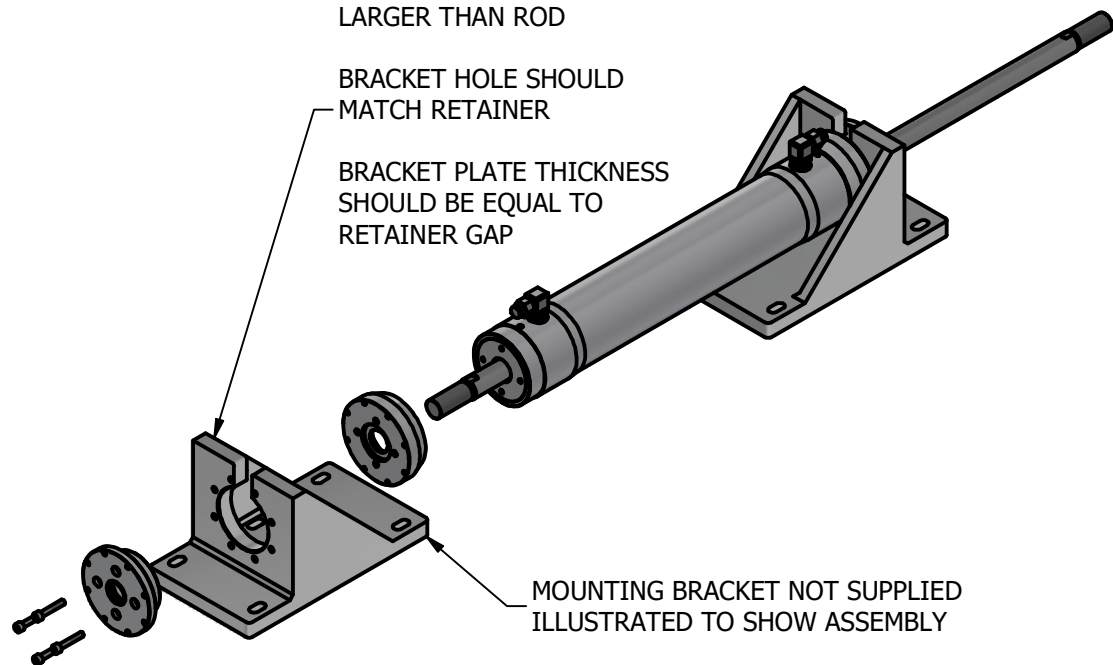
SAME MOUNTING  
DETAIL BOTH ENDS



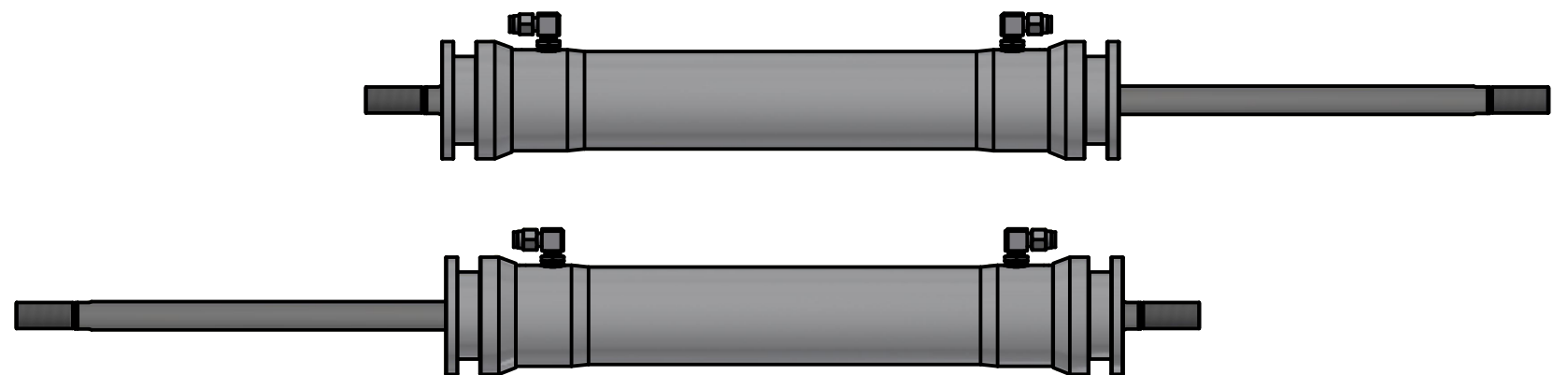
TOP SLOT SHOULD BE  
LARGER THAN ROD

BRACKET HOLE SHOULD  
MATCH RETAINER

BRACKET PLATE THICKNESS  
SHOULD BE EQUAL TO  
RETAINER GAP



MOUNTING BRACKET NOT SUPPLIED  
ILLUSTRATED TO SHOW ASSEMBLY



**OMS**  
Ocean Marine Systems

Title ALUMINIUM DOUBLE PULL TRAVELLER CYLINDER		Revision 1
Drawing No. TDA-0030-S0300-NP-71		Date Drawn 02/11/2021
Tel: +44 (0)1202 596630 www.oms.ltd		By AL
© Copyright. All rights to this drawing and design are the sole property of OMS Ltd. This drawing must not be copied, communicated or loaned to any third party without the written consent of OMS Ltd.		