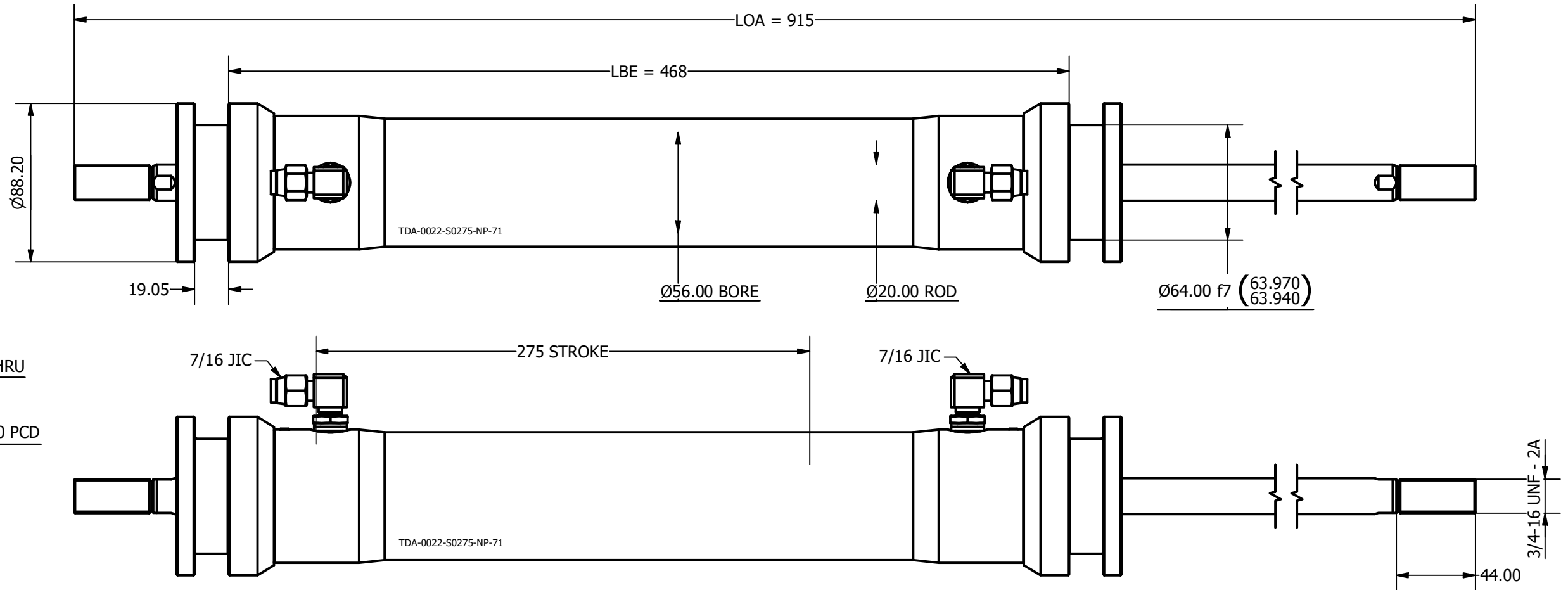


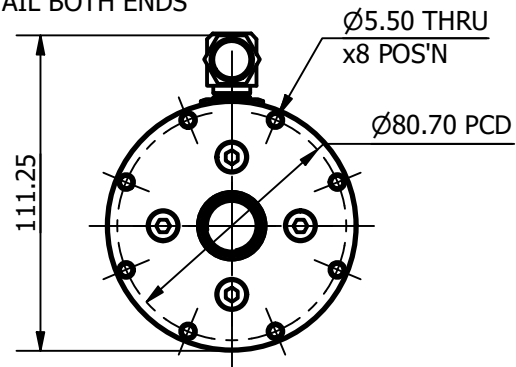
SIZE -0022  
 LENGTH 915 mm  
 ROD THREAD 3/4-16 UNF  
 BORE DIA 56 mm  
 ROD DIA 20 mm  
 STROKE 275 mm  
 WEIGHT 6.116 Kg  
 ANNULUS AREA (PULLING/RETRACTING) 2149 mm<sup>2</sup>  
 OIL DISPLACEMENT 1.18 ltrs  
 PULL FORCE @ 150 BAR 3286 Kg (32233 N)  
 PULL FORCE @ 250 BAR 5476 Kg (53721 N)  
 MAX PULL FORCE @ 350 BAR (RELIEF) 7667 Kg (75210 N)

**NOTE:**

1. CUSTOM VARIATIONS AND ROD THREADS ARE AVAIBALE ON REQUEST
2. ATTACHMENT METHOD CUSTOMISABLE ON REQUEST



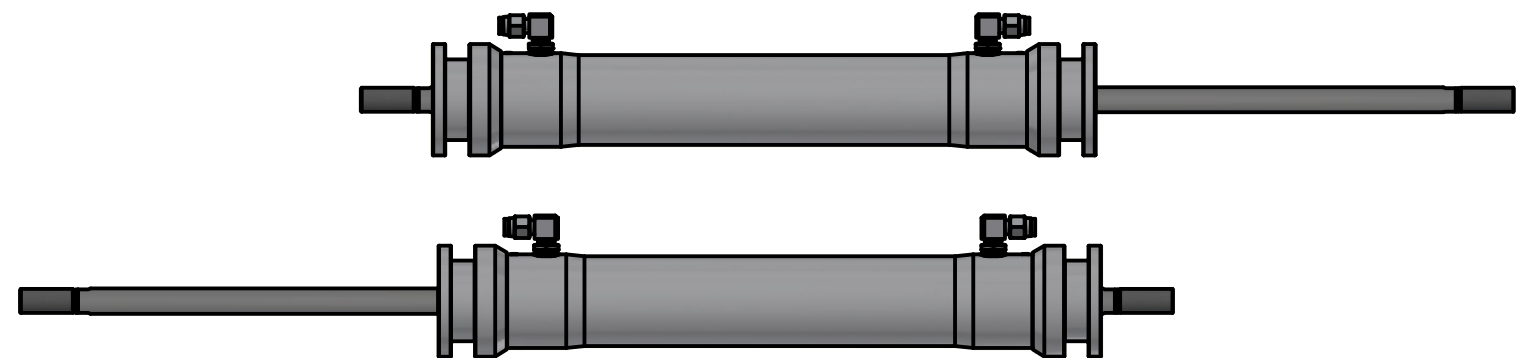
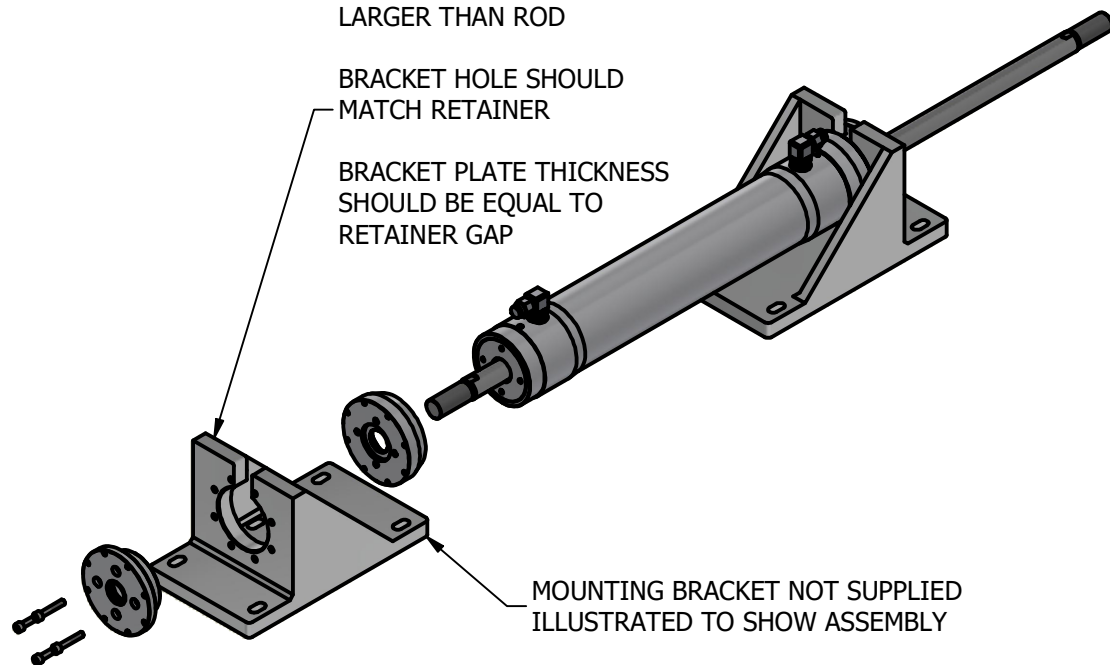
SAME MOUNTING  
DETAIL BOTH ENDS



TOP SLOT SHOULD BE  
LARGER THAN ROD

BRACKET HOLE SHOULD  
MATCH RETAINER

BRACKET PLATE THICKNESS  
SHOULD BE EQUAL TO  
RETAINER GAP



**OMS**  
 Ocean Marine Systems

Title ALUMINIUM DOUBLE PULL TRAVELLER CYLINDER		Revision 1
Drawing No. TDA-0022-S0275-NP-71		Date Drawn 02/11/2021
Tel: +44 (0)1202 596630 www.oms.ltd		By AL
© Copyright. All rights to this drawing and design are the sole property of OMS Ltd. This drawing must not be copied, communicated or loaned to any third party without the written consent of OMS Ltd.		