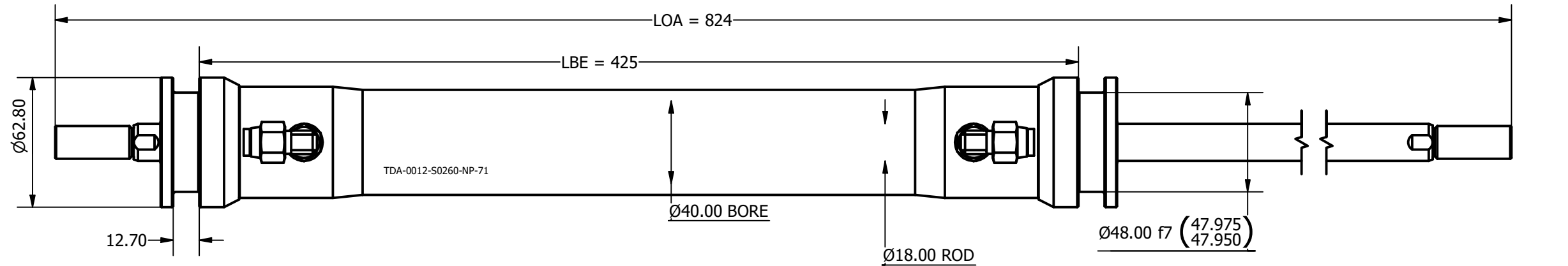


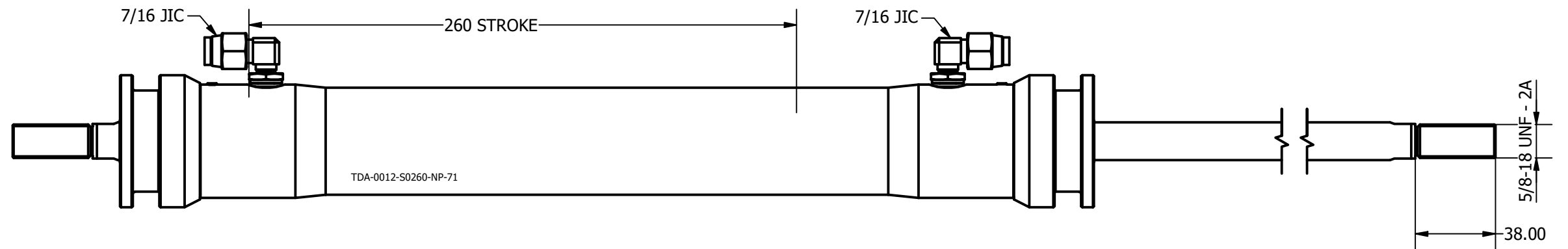
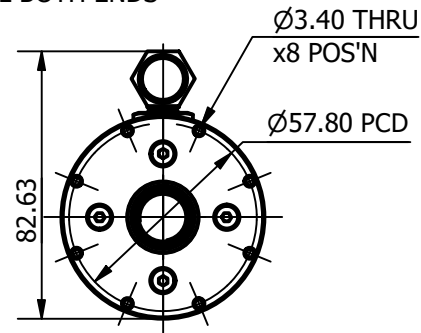
SIZE	-0012
LENGTH	824 mm
ROD THREAD	5/8-18 UNF
BORE DIA	40 mm
ROD DIA	18 mm
STROKE	260 mm
WEIGHT	3.233 Kg
ANNULUS AREA (PULLING/RETRACTING)	1002 mm ²
OIL DISPLACEMENT	0.52 ltrs
PULL FORCE @ 150 BAR	1532 Kg (15033 N)
PULL FORCE @ 250 BAR	2554 Kg (25054 N)
MAX PULL FORCE @ 350 BAR (RELIEF)	3576 Kg (35076 N)

NOTE:

1. CUSTOM VARIATIONS AND ROD THREADS ARE AVAIBALE ON REQUEST
2. ATTACHMENT METHOD CUSTOMISABLE ON REQUEST



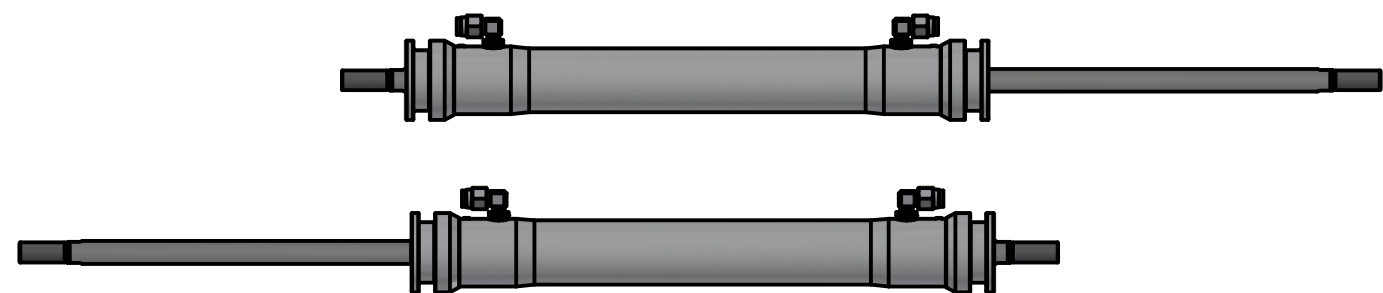
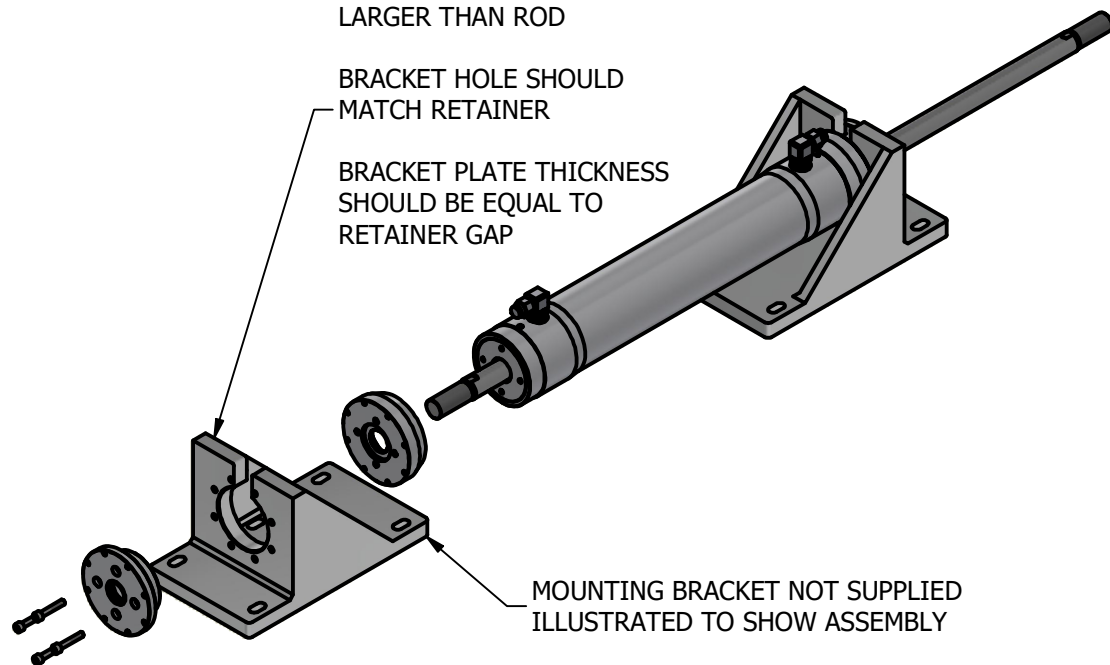
SAME MOUNTING
DETAIL BOTH ENDS




TOP SLOT SHOULD BE
LARGER THAN ROD

BRACKET HOLE SHOULD
MATCH RETAINER

BRACKET PLATE THICKNESS
SHOULD BE EQUAL TO
RETAINER GAP



	Title ALUMINIUM DOUBLE PULL TRAVELLER CYLINDER		Revision 1
	Drawing No. TDA-0012-S0260-NP-71		Date Drawn 02/11/2021
	Tel: +44 (0)1202 596630 www.oms.ltd		By AL

© Copyright. All rights to this drawing and design are the sole property of OMS Ltd. This drawing must not be copied, communicated or loaned to any third party without the written consent of OMS Ltd.