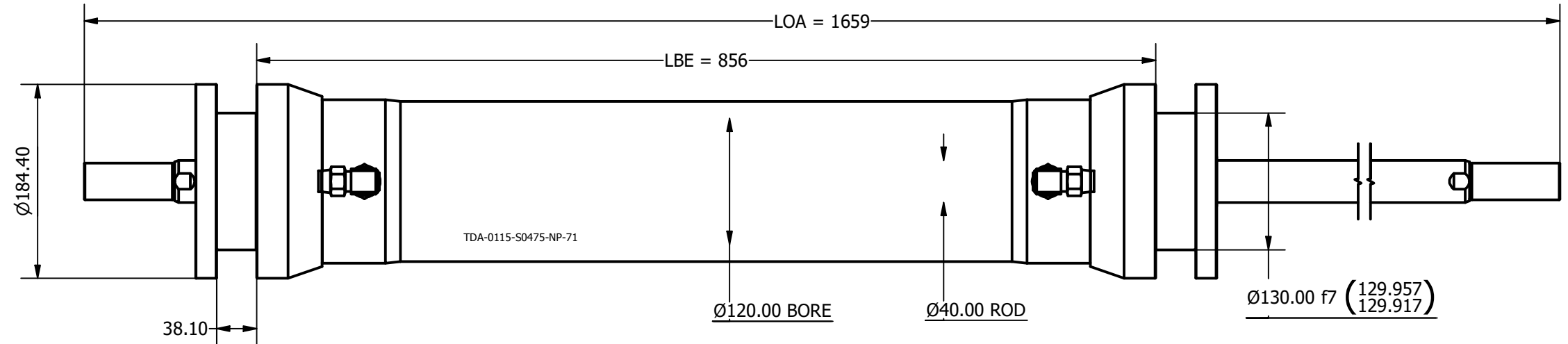


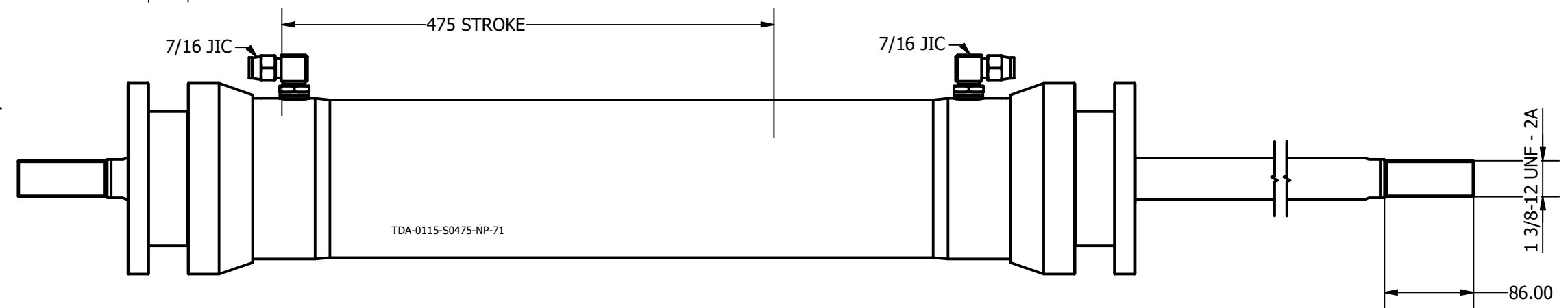
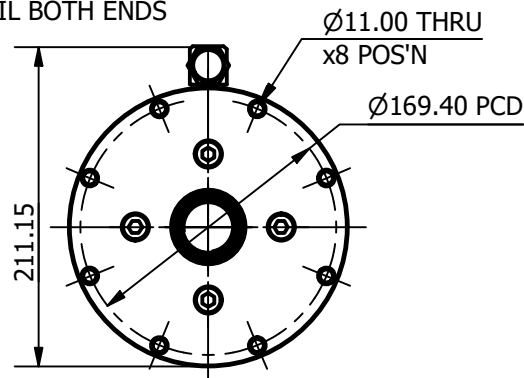
| | |
|-----------------------------------|-----------------------|
| SIZE | -0115 |
| LENGTH | 1659 mm |
| ROD THREAD | 1 3/8-12 UNF |
| BORE DIA | 120 mm |
| ROD DIA | 40 mm |
| STROKE | 475 mm |
| WEIGHT | 48.732 Kg |
| ANNULUS AREA (PULLING/RETRACTING) | 10053 mm ² |
| OIL DISPLACEMENT | 9.55 ltrs |
| PULL FORCE @ 150 BAR | 15372 Kg (150796 N) |
| PULL FORCE @ 250 BAR | 25620 Kg (251327 N) |
| MAX PULL FORCE @ 350 BAR (RELIEF) | 35867 Kg (351858 N) |

NOTE:

1. CUSTOM VARIATIONS AND ROD THREADS ARE AVAIBALE ON REQUEST
2. ATTACHMENT METHOD CUSTOMISABLE ON REQUEST



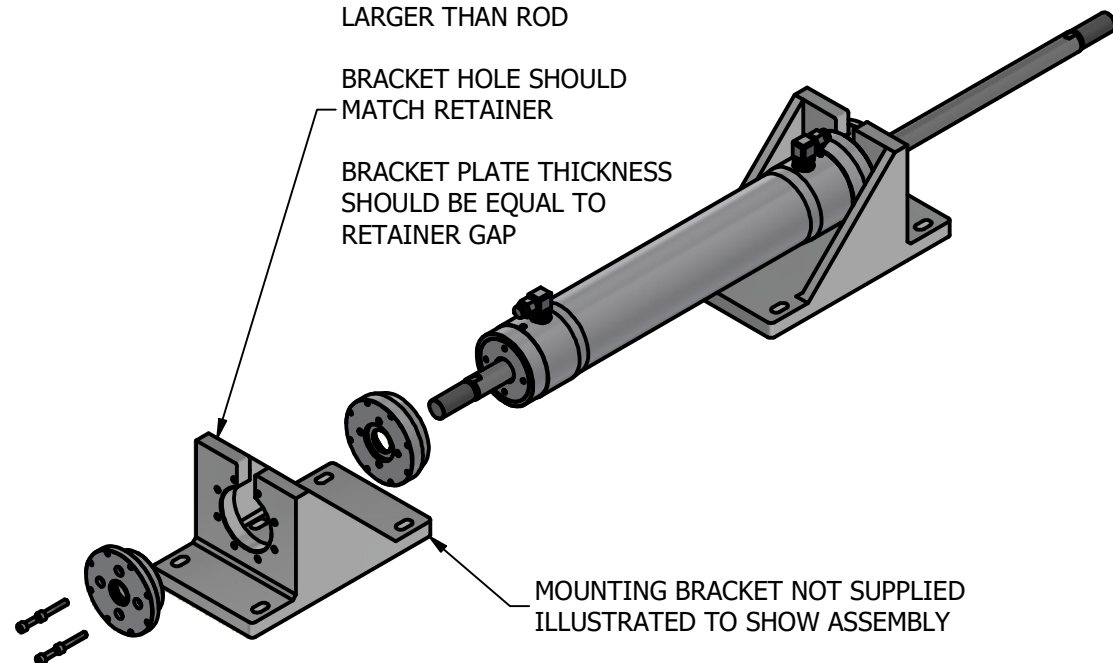
SAME MOUNTING
DETAIL BOTH ENDS



TOP SLOT SHOULD BE
LARGER THAN ROD

BRACKET HOLE SHOULD
MATCH RETAINER

BRACKET PLATE THICKNESS
SHOULD BE EQUAL TO
RETAINER GAP



OMS
Ocean Marine Systems

| | | |
|---|--|--------------------------|
| Title ALUMINIUM DOUBLE PULL TRAVELLER CYLINDER | | Revision 1 |
| Drawing No. TDA-00115-S0475-NP-71 | | Date Drawn 03/11/2021 |
| Tel: +44 (0)1202 596630 www.oms.ltd | | By AL |
| © Copyright. All rights to this drawing and design are the sole property of OMS Ltd. This drawing must not be copied, communicated or loaned to any third party without the written consent of OMS Ltd. | | |