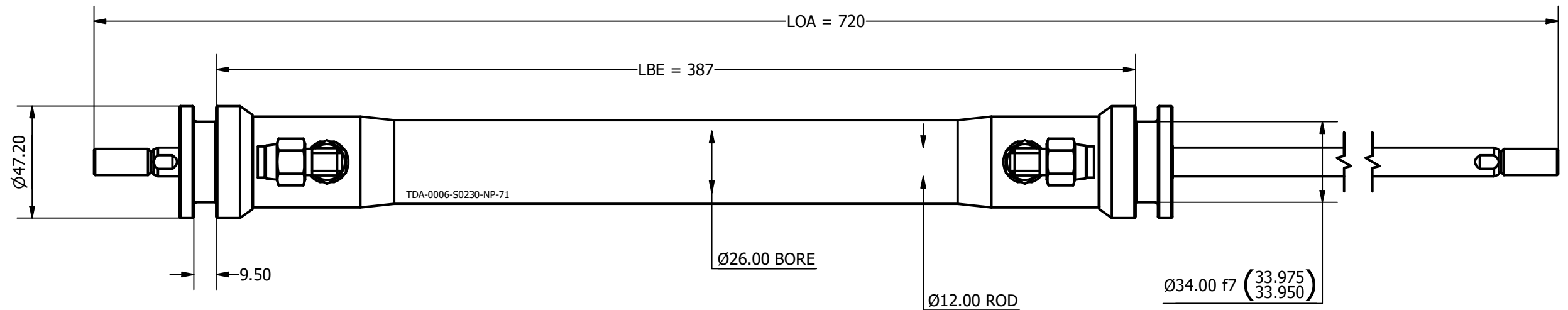


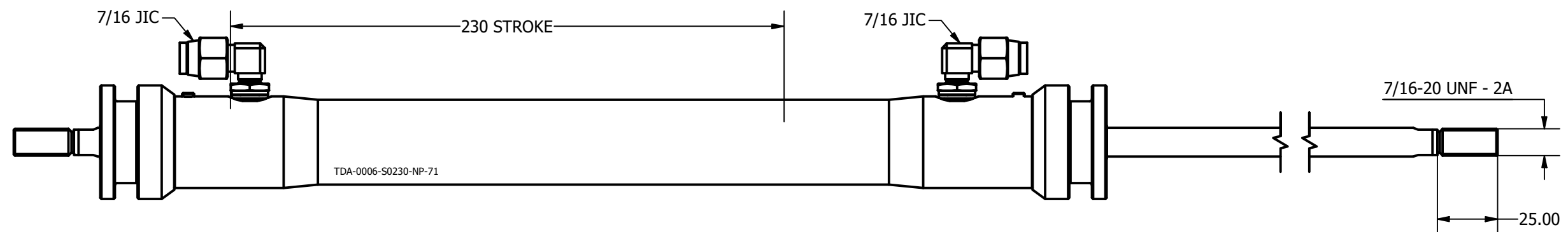
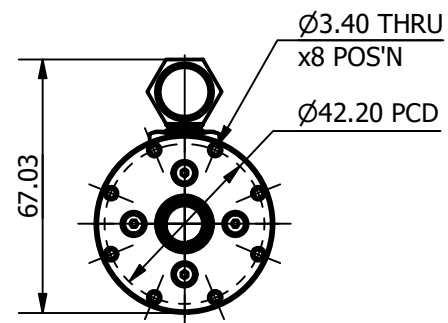
SIZE -0006
 LENGTH 720 mm
 ROD THREAD 7/16-20 UNF
 BORE DIA 26 mm
 ROD DIA 12 mm
 STROKE 230 mm
 WEIGHT 1.441 Kg
 ANNULUS AREA (PULLING/RETRACTING) 418 mm²
 OIL DISPLACEMENT 0.18 ltrs
 PULL FORCE @ 150 BAR 639 Kg (6267 N)
 PULL FORCE @ 250 BAR 1065 Kg (10446 N)
 MAX PULL FORCE @ 350 BAR (RELIEF) 1491 Kg (14624 N)

NOTE:

1. CUSTOM VARIATIONS AND ROD THREADS ARE AVAIBALE ON REQUEST
2. ATTACHMENT METHOD CUSTOMISABLE ON REQUEST



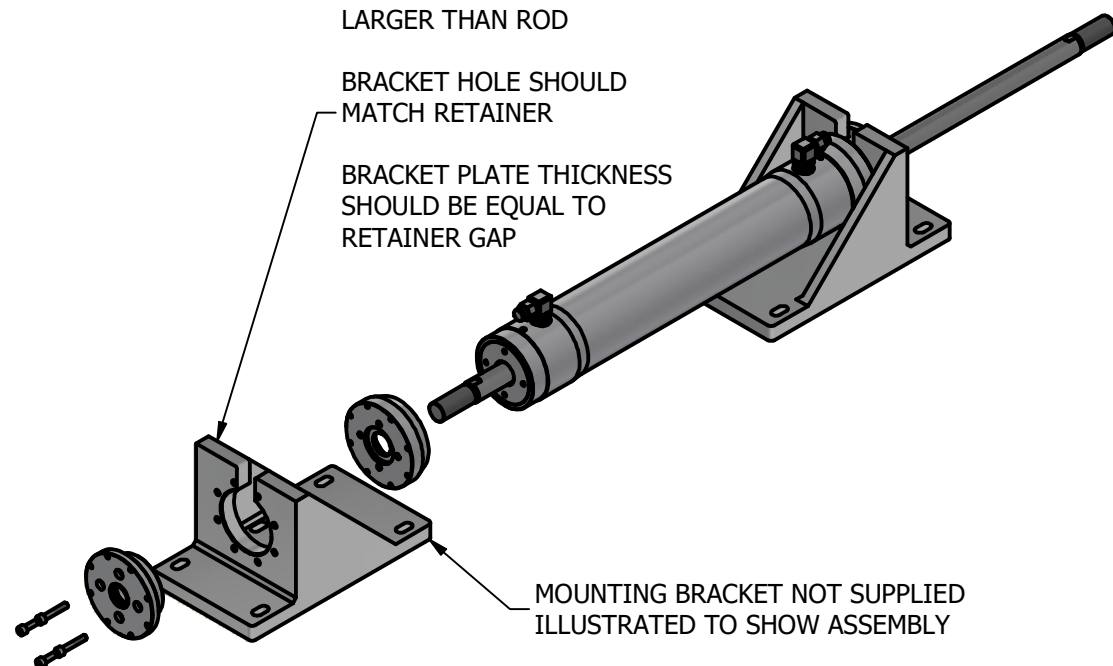
SAME MOUNTING
DETAIL BOTH ENDS



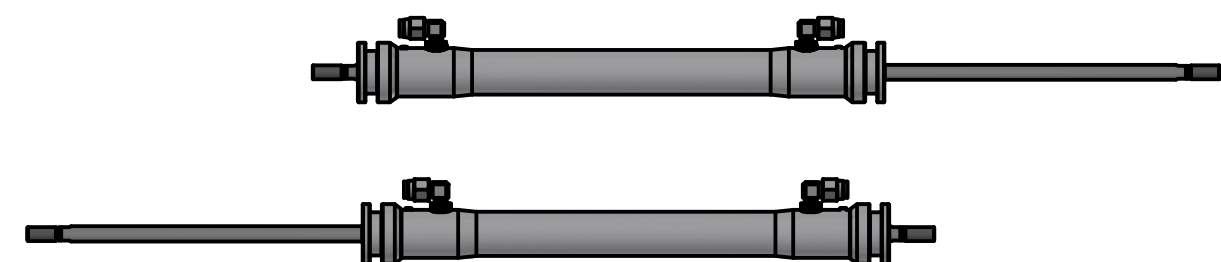
TOP SLOT SHOULD BE
LARGER THAN ROD

BRACKET HOLE SHOULD
MATCH RETAINER

BRACKET PLATE THICKNESS
SHOULD BE EQUAL TO
RETAINER GAP



MOUNTING BRACKET NOT SUPPLIED
ILLUSTRATED TO SHOW ASSEMBLY



	Title ALUMINIUM DOUBLE PULL TRAVELLER CYLINDER		Revision 1
	Drawing No. TDA-0006-S0230-NP-71		Date Drawn By 01/11/2021 AL
	Tel: +44 (0)1202 596630 www.oms.ltd		© Copyright. All rights to this drawing and design are the sole property of OMS Ltd. This drawing must not be copied, communicated or loaned to any third party without the written consent of OMS Ltd.