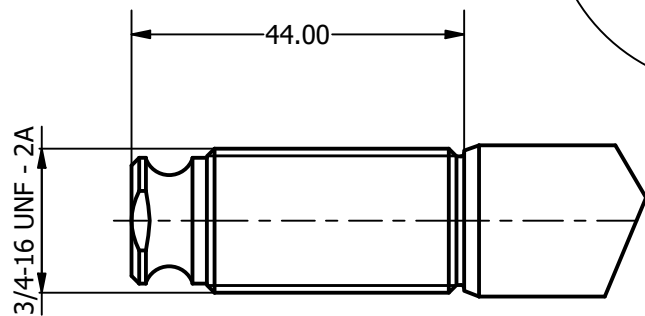
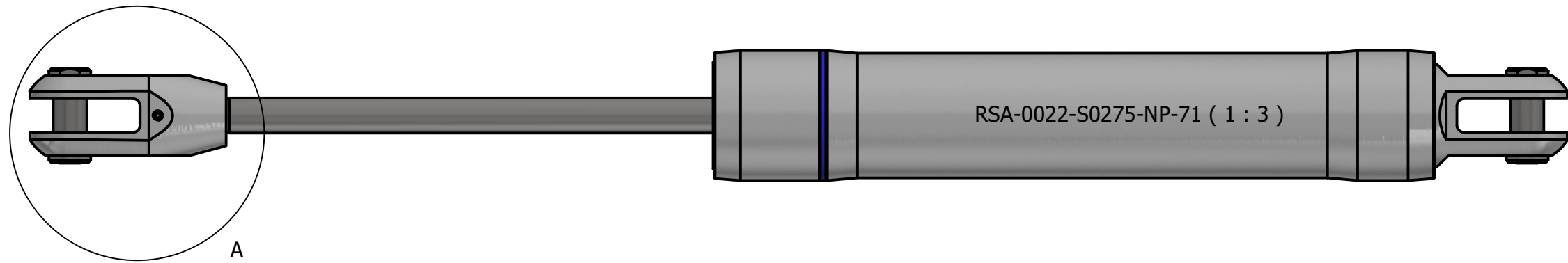
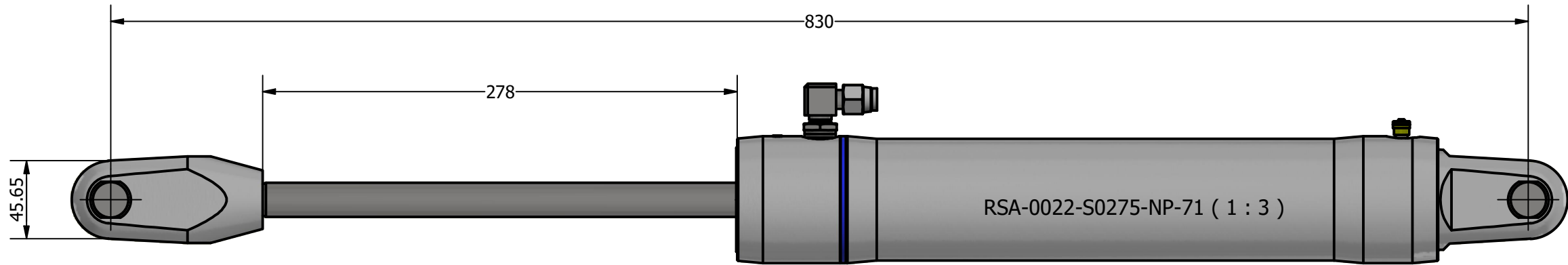
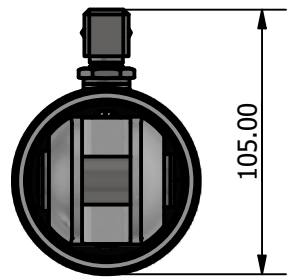
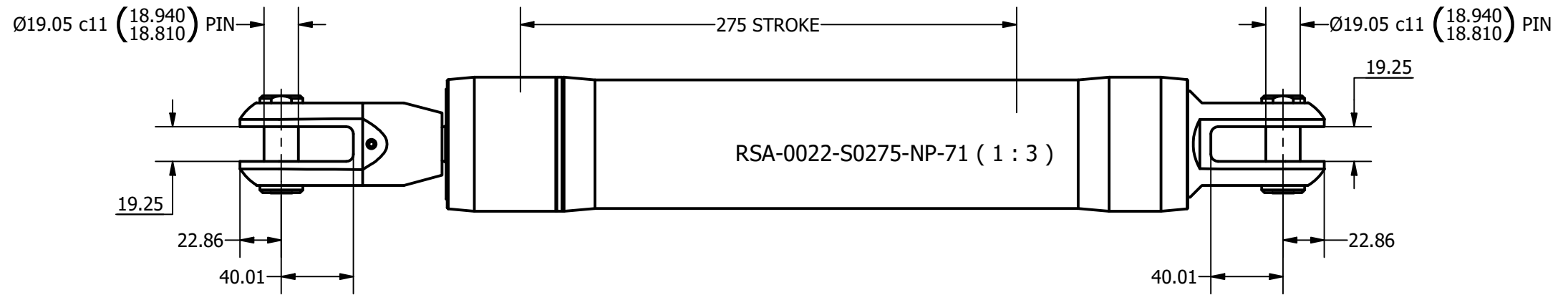
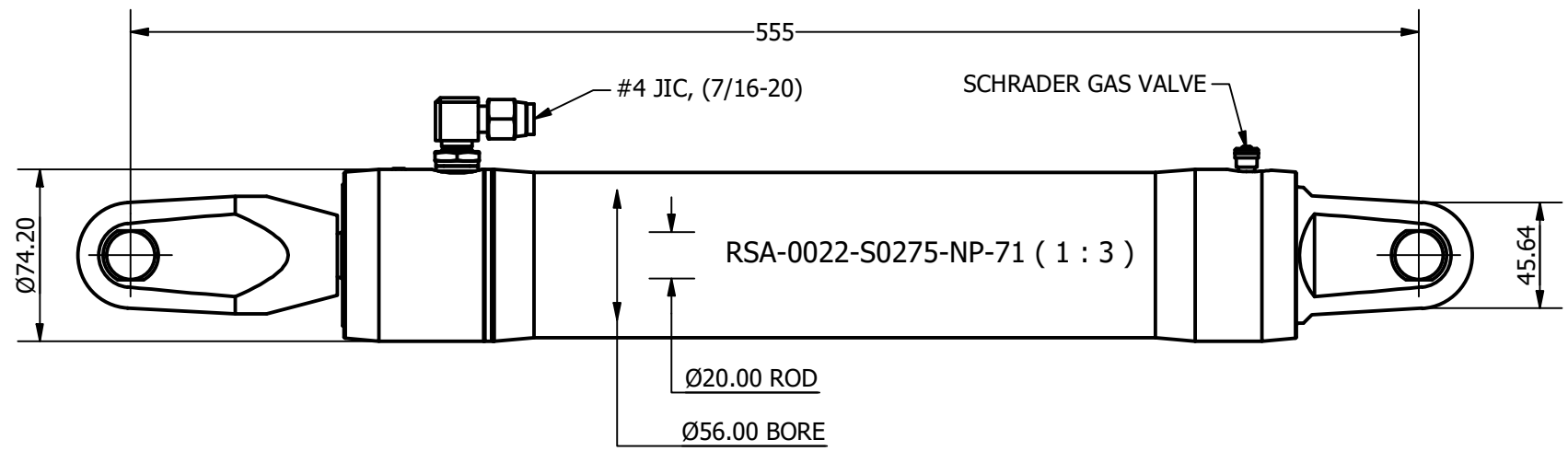


SIZE	-0022
PCLC	555 mm
PIN / GAP	19.05 mm
BORE DIA	56 mm
ROD DIA	20 mm
STROKE	275 mm
WEIGHT	4.23 Kg
FULL BORE AREA (PUSHING/EXTENDING)	2463 mm ²
ANNULUS AREA (PULLING/RETRACTING)	2149 mm ²
GAS DISPLACEMENT (FULL BORE SIDE)	0.68 ltrs
OIL DISPLACEMENT (ANNULUS SIDE)	0.59 ltrs
MAXIMUM PUSH FORCE @ 4 BAR	126 Kg (1232 N)
PULL FORCE @ 150 BAR	3286 Kg (32233 N)
PULL FORCE @ 250 BAR	5476 Kg (53721 N)
MAX PULL FORCE @ 350 BAR (RELIEF)	7667 Kg (75210 N)



A (1:1)

Q:\AA BRAND HYDRAULICS\MODELS INV\RSA-71\RSA-71\RSA-0022-S0275-NP-71.idw
 Q:\AA BRAND HYDRAULICS\MODELS INV\RSA-71\RSA-71\RSA-0022-S0275-NP-71.iam

	Title ALUMINIUM SINGLE ACTING GAS RETURN CYLINDER		Revision C	Dimensions in millimeters & degrees Gen. Tolerance ± 0.25 Gen. Finish 3.2		
	Drawing No. RSA-0022-S0275-NP-71		Material	Finish BLACK ANODISED		 If in doubt ask!
+44 (0)1202 596630 www.oms.ltd	Sheet 1 of 3	Scale 1:3 @ A3	Mass N/A	Date Drawn By 29/11/2012 AN	Modified Date By	

© Copyright. All rights to this drawing and design are the sole property of OMS Ltd. This drawing must not be copied, communicated or loaned to any third party without the written consent of OMS Ltd.