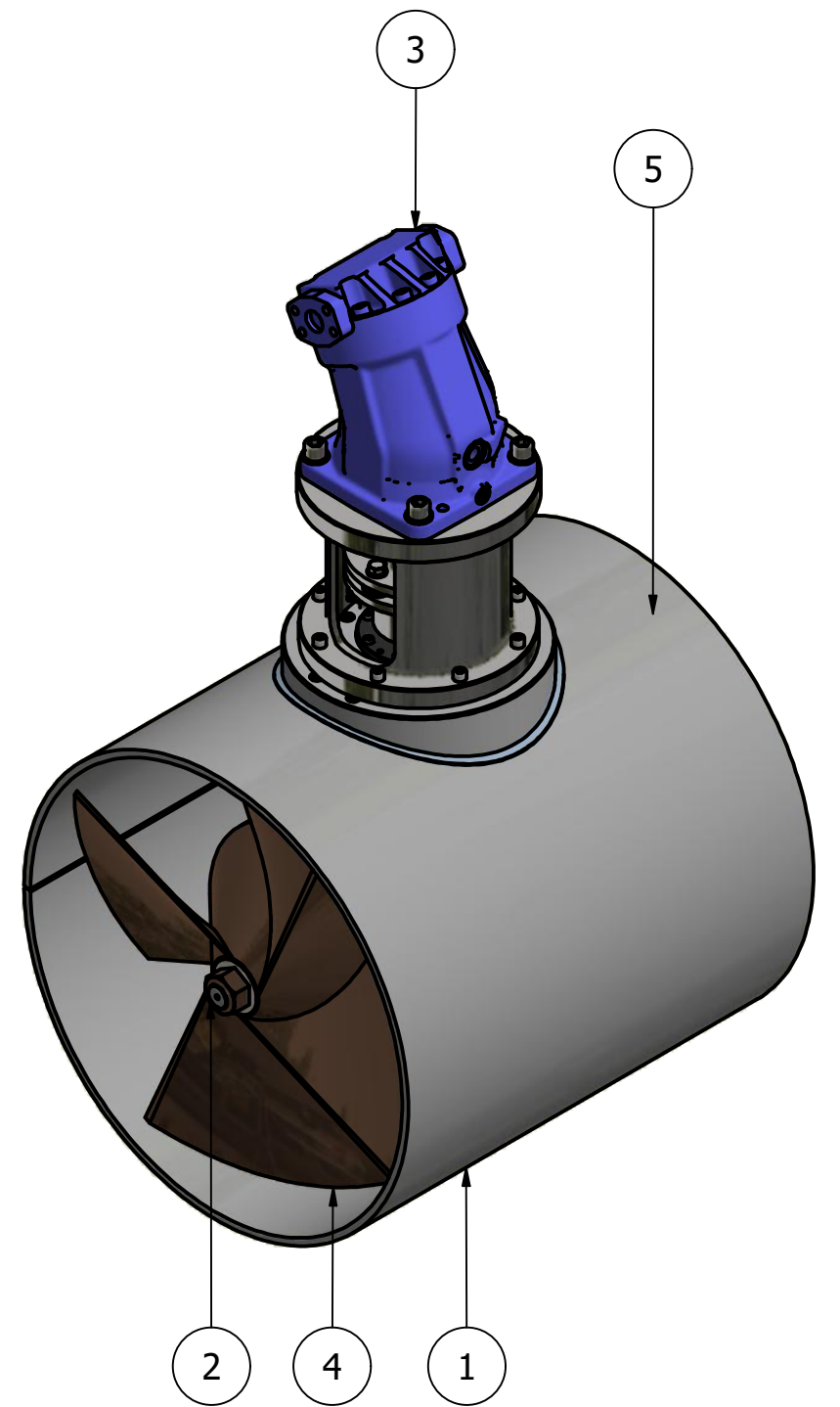
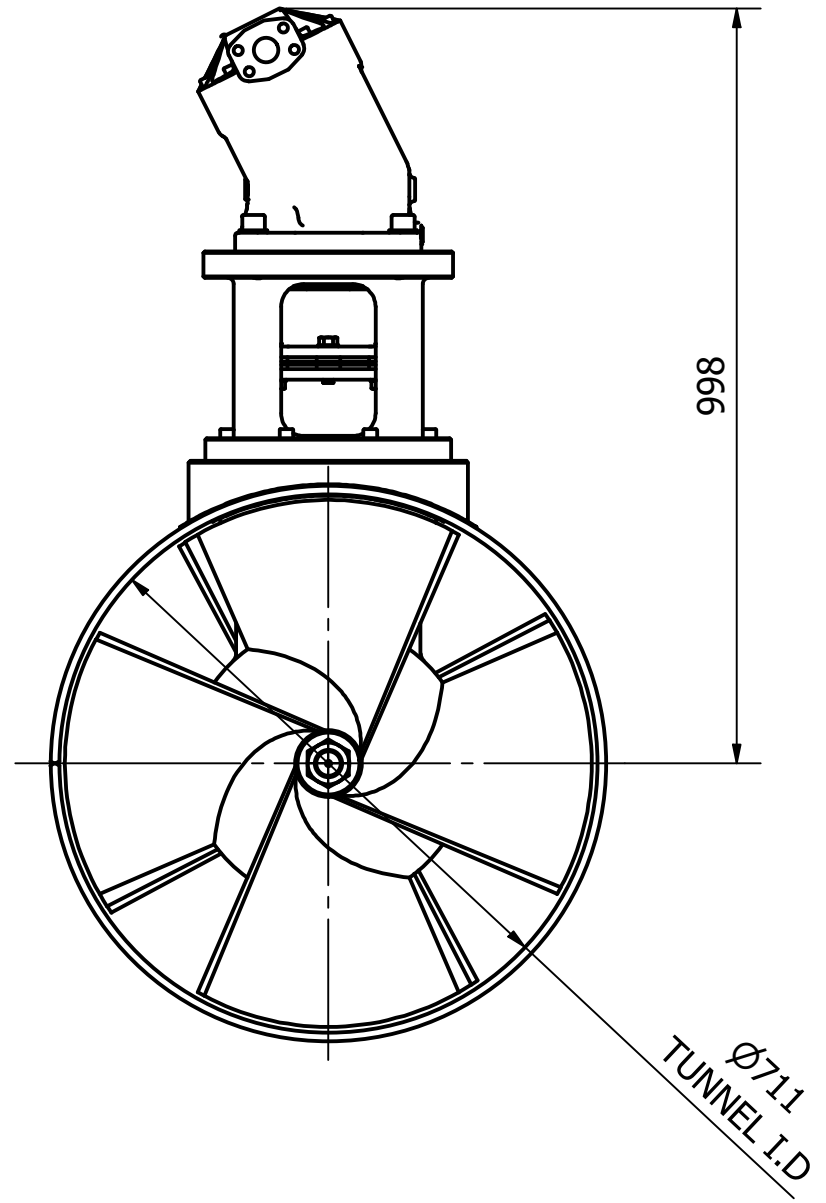
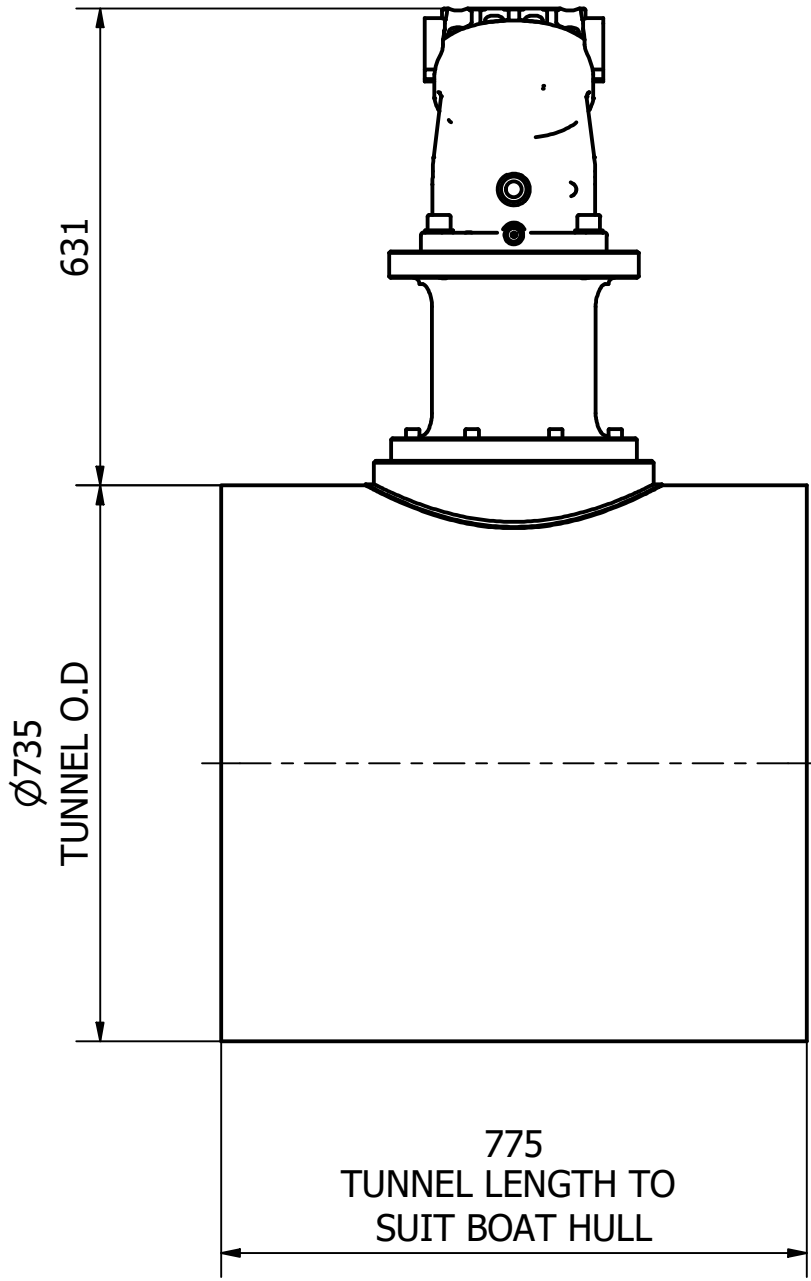




ITEM	QTY	PART NUMBER
1	1	TUNNEL ASSEMBLY
2	1	POD ASSEMBLY
3	1	MOTOR ASSEMBLY
4	1	PROPELLER 1
5	1	PROPELLER 2

NOMINAL PROP DIA	700mm
POWER RANGE	142-194Kw (190-260hp)
MIN / MAX THRUST	1704-2328kgf (3757-5132lbf)
WEIGHT APPROXIMATELY (EXCL TUNNEL)	508kg (1120lb)
STANDARD PRESSURE	330 BAR
NOMINAL FLOW	390 L/min



 <p><b>OCEAN MARINE SYSTEMS</b></p> <p>Tel: +44 (0)1202 596630 www.oceanmarinesystems.co.uk</p>	Title <b>TUNNEL THRUSTER - HYDRAULIC</b>		Revision <b>1</b>	Dimensions in millimeters & degrees Gen. Tolerance ± 0.2 Gen. Finish 3.2 ✓			
	Drawing No. <b>H-0700-T</b>		Material	Finish	 <b>If in doubt ask!</b>		
Sheet 1 of 1	Scale NTS @ A3	Mass N/A	Date Drawn 03/03/2020	By JG	Modified Date	By	Cert. Insp. Grade