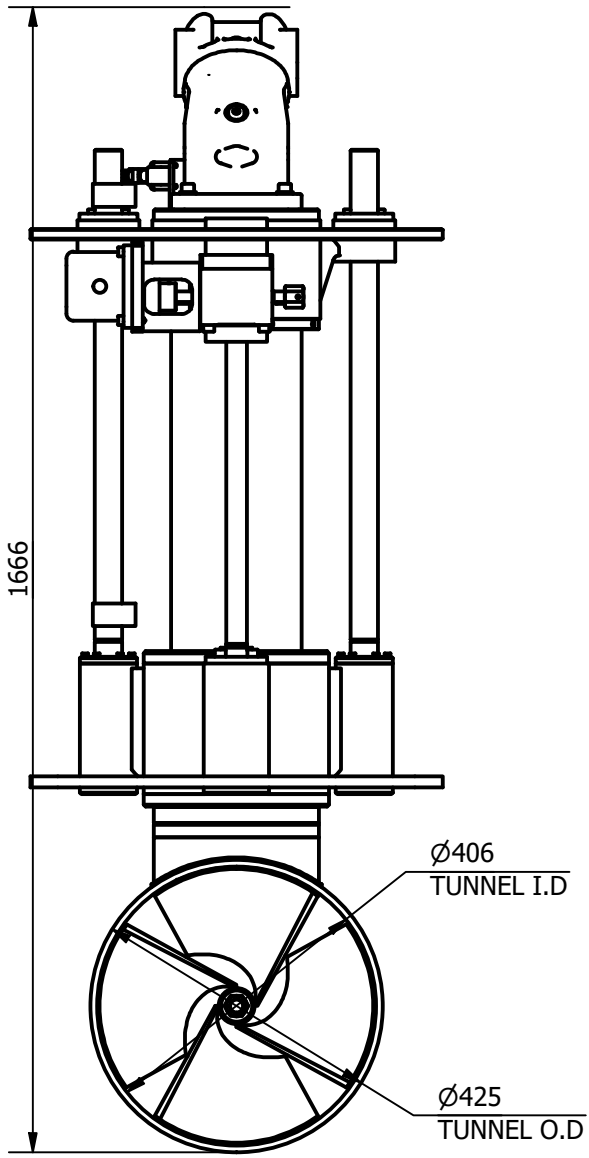
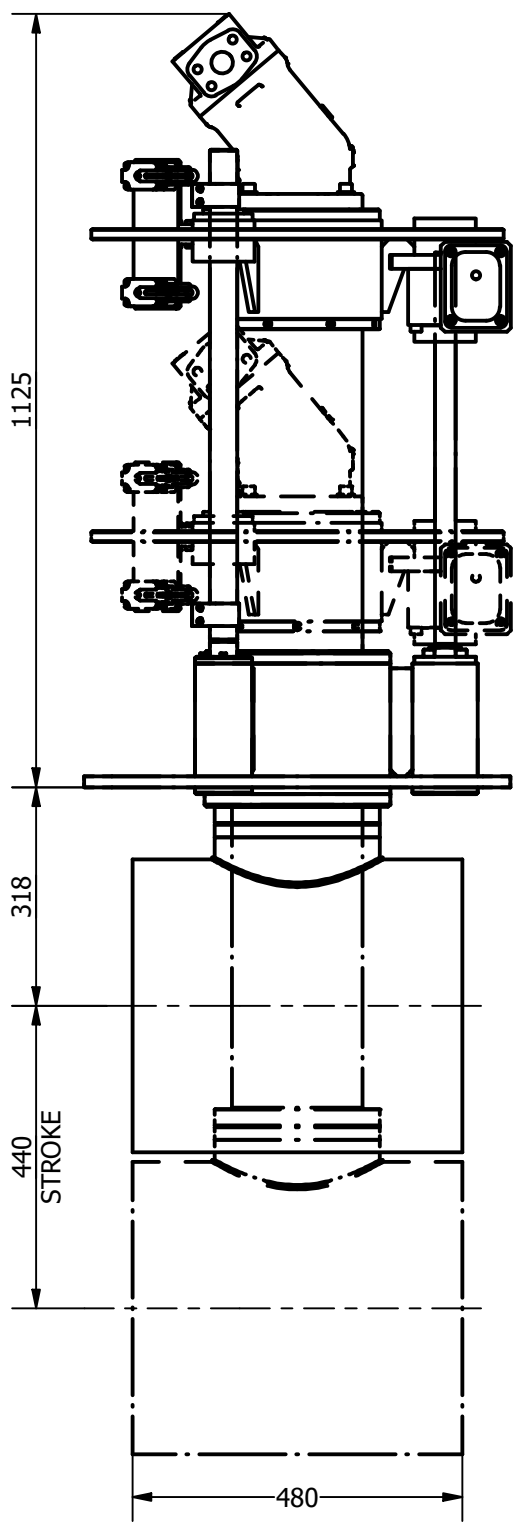
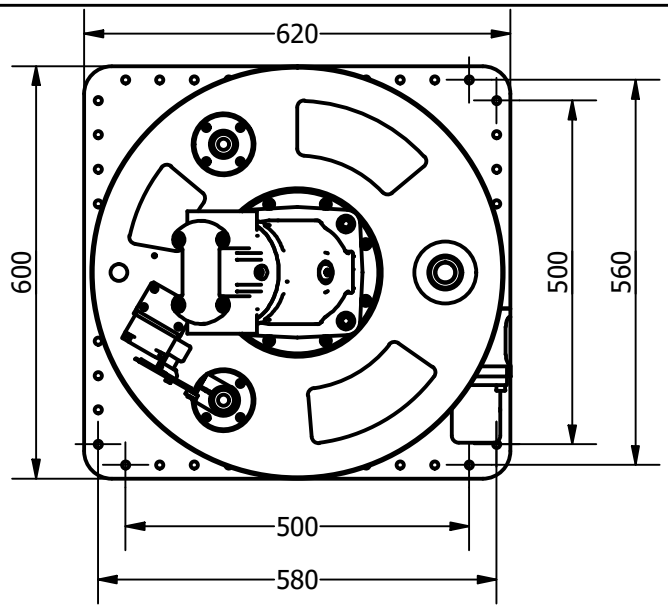
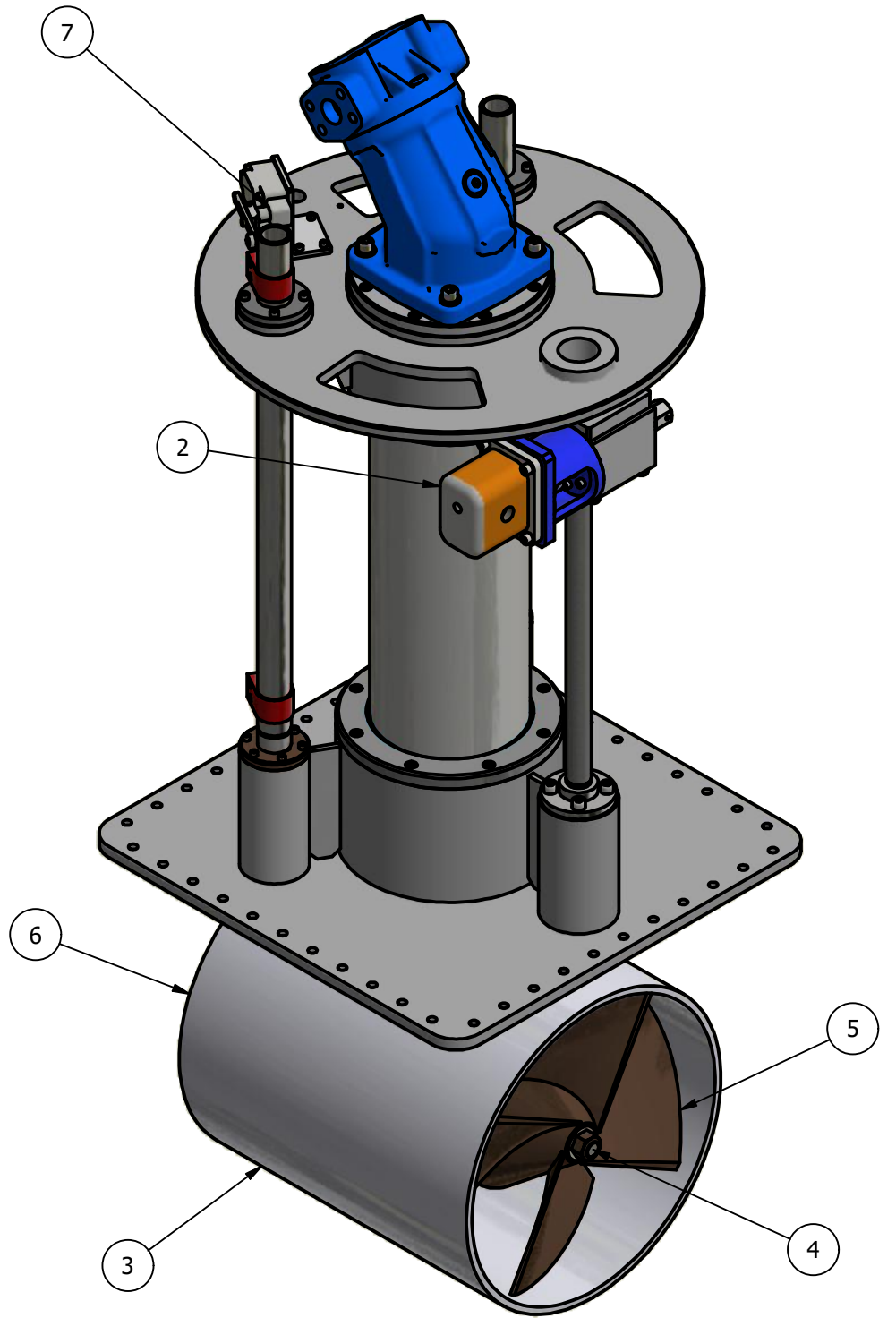

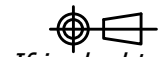


ITEM	QTY	DESCRIPTION
1	1	HYDRAULIC MAIN DRIVE MECHANISM
2	1	HYDRAULIC LIFT MECHANISM
3	1	TUNNEL ASSEMBLY
4	1	POD ASSEMBLY
5	1	PROPELLER 1
6	1	PROPELLER 2
7	2	PROXIMITY SENSOR



NOMINAL PROP DIA	400mm
POWER RANGE	36-63Kw (48-85hp)
MIN / MAX THRUST	432-756kgf (952-1667lbf)
WEIGHT APPROXIMATELY	252kg (557lb)
STANDARD PRESSURE	250 Bar
NOMINAL FLOW	168 L/min



	Title VERTICAL RETRACT THRUSTER - HYDRAULIC				Revision 2		Dimensions in millimeters & degrees Gen. Tolerance ± 0.2 Gen. Finish 3.2				
	Drawing No. H-0400-V		Material		Finish		 <i>If in doubt ask!</i>				
Tel: +44 (0)1202 596630 www.oceanmarinesystems.co.uk		Sheet 1 of 1	Scale NTS @ A3	Mass N/A	Date Drawn 05/03/2020	By CR	Modified Date	By	Cert. Y	Insp. III	Grade A