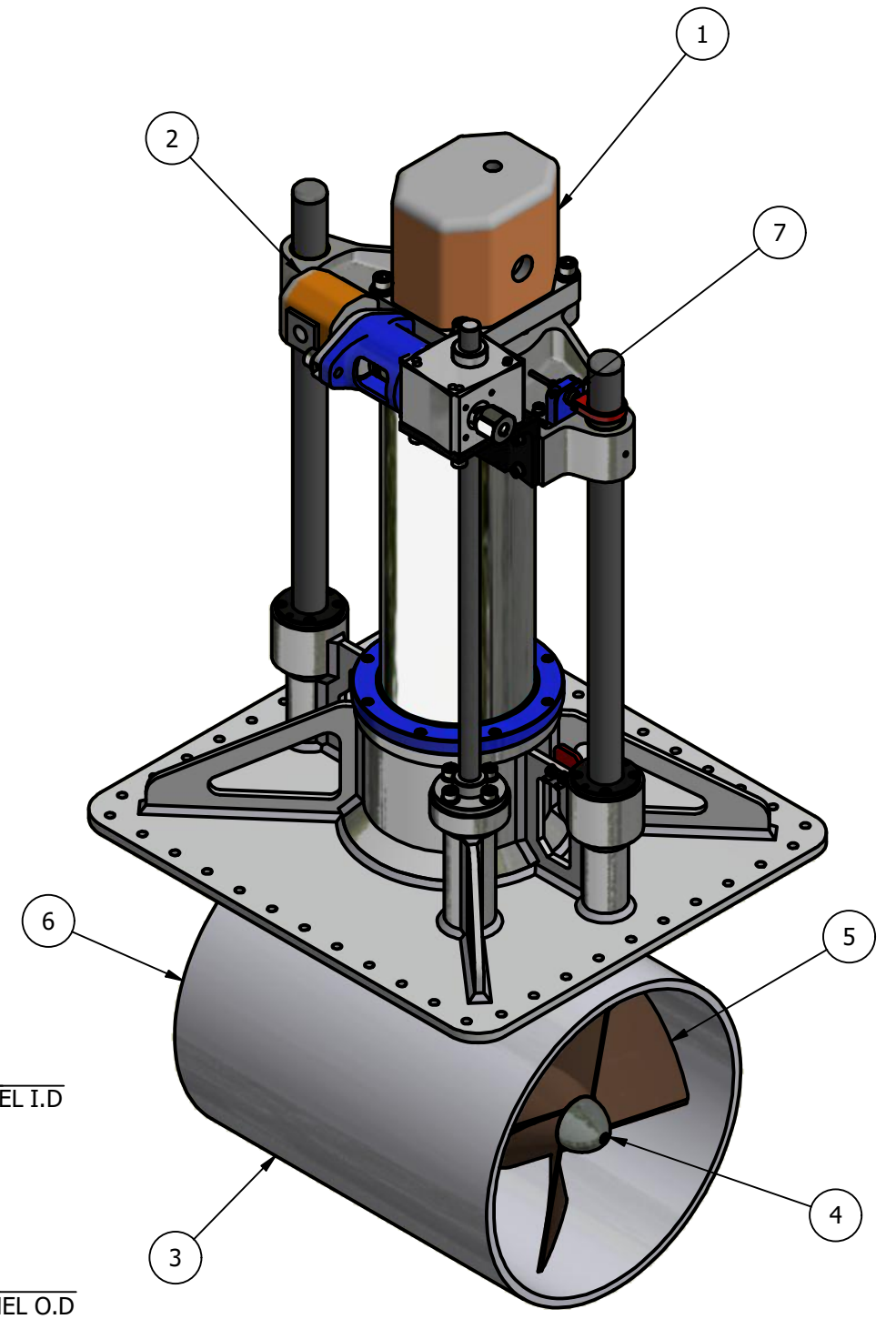
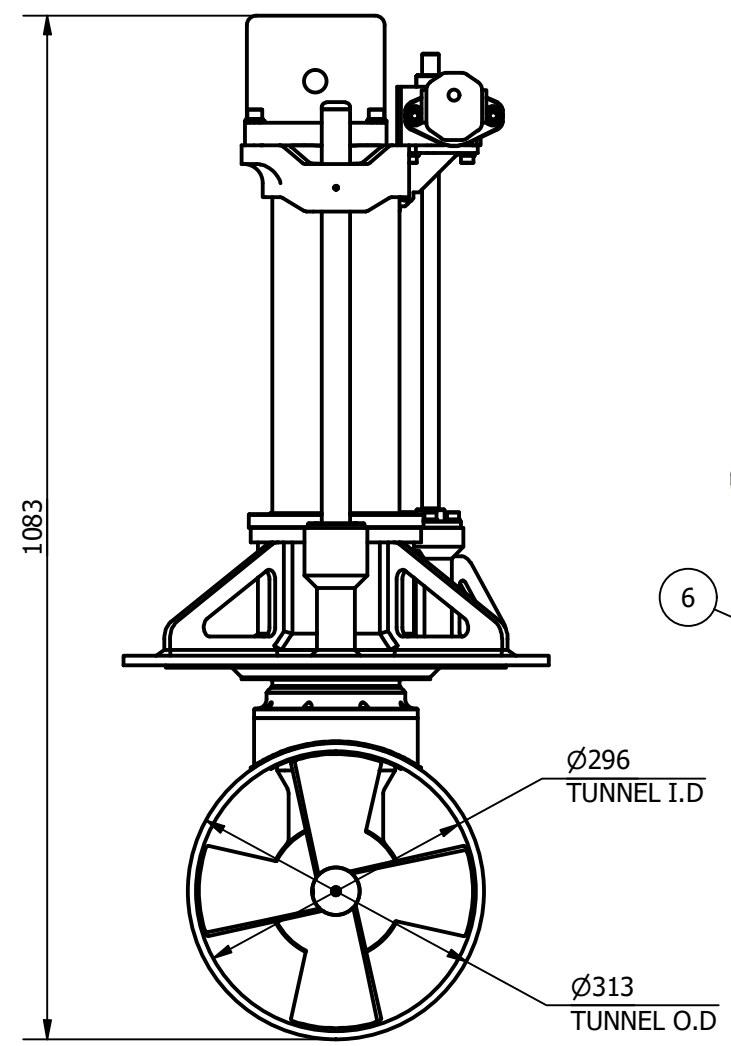
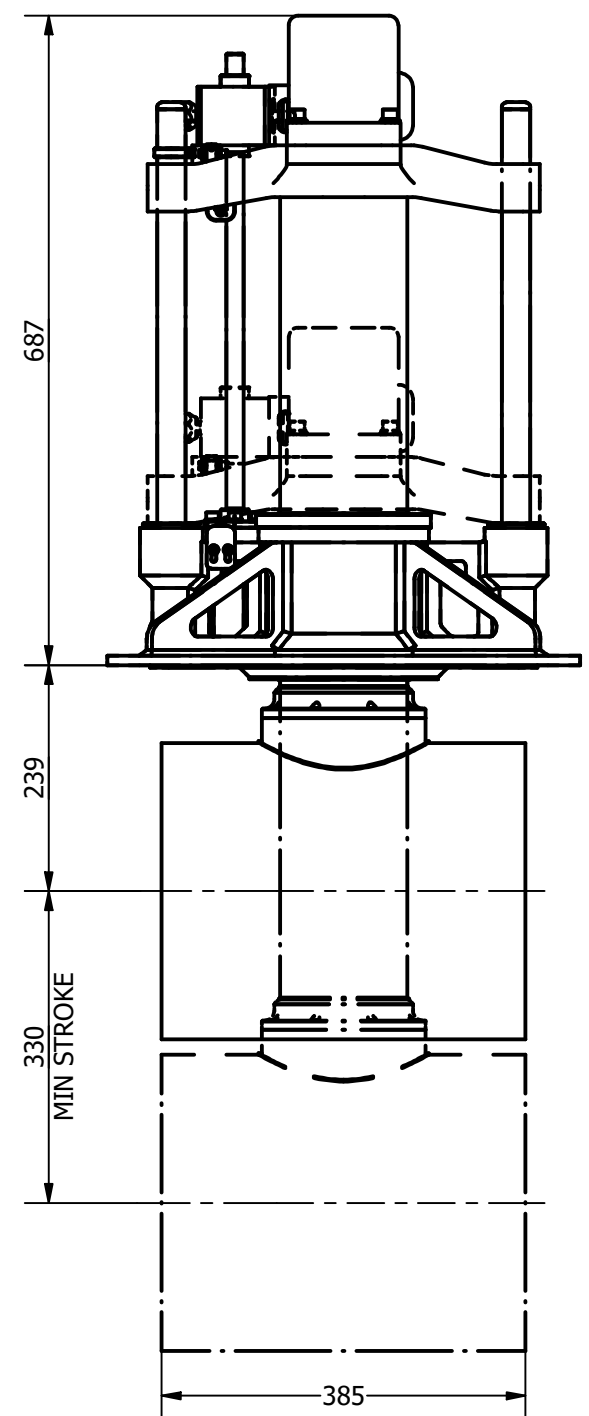
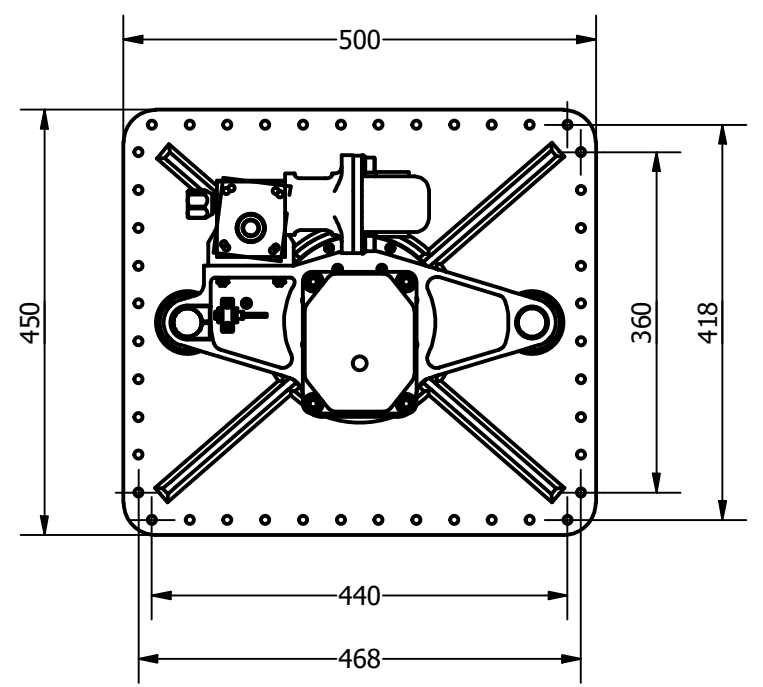

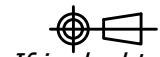


ITEM	QTY	DESCRIPTION
1	1	HYDRAULIC MAIN DRIVE MOTOR
2	1	HYDRAULIC LIFT MECHANISM
3	1	TUNNEL ASSEMBLY
4	1	POD ASSEMBLY
5	1	PROPELLER 1
6	1	PROPELLER 2
7	2	PROXIMITY SENSOR

NOMINAL PROP DIA	300mm
POWER RANGE	25-36Kw (33-48hp)
MIN / MAX THRUST	300-432kgf (661-952lbf)
WEIGHT APPROXIMATELY	70kg (155lb)
STANDARD PRESSURE	250 Bar
NOMINAL FLOW	98 L/min



	Title VERTICAL RETRACTING THRUSTER - HYDRAULIC				Revision 2		Dimensions in millimeters & degrees				
	Drawing No. H-0300-V		Material		Finish		Gen. Tolerance ± 0.2 Gen. Finish 3.2				
Tel: +44 (0)1202 596630 www.oceanmarinesystems.co.uk		Sheet 1 of 1	Scale NTS @ A3	Mass N/A	Date Drawn 05/03/2020	By CR	Modified Date	By	 <i>If in doubt ask!</i>		
© Copyright. All rights to this drawing and design are the sole property of Ocean Marine Systems Ltd. This drawing must not be copied, communicated or loaned to any third party without the written consent of Ocean Marine Systems Ltd.									Cert. Y	Insp. III	Grade A