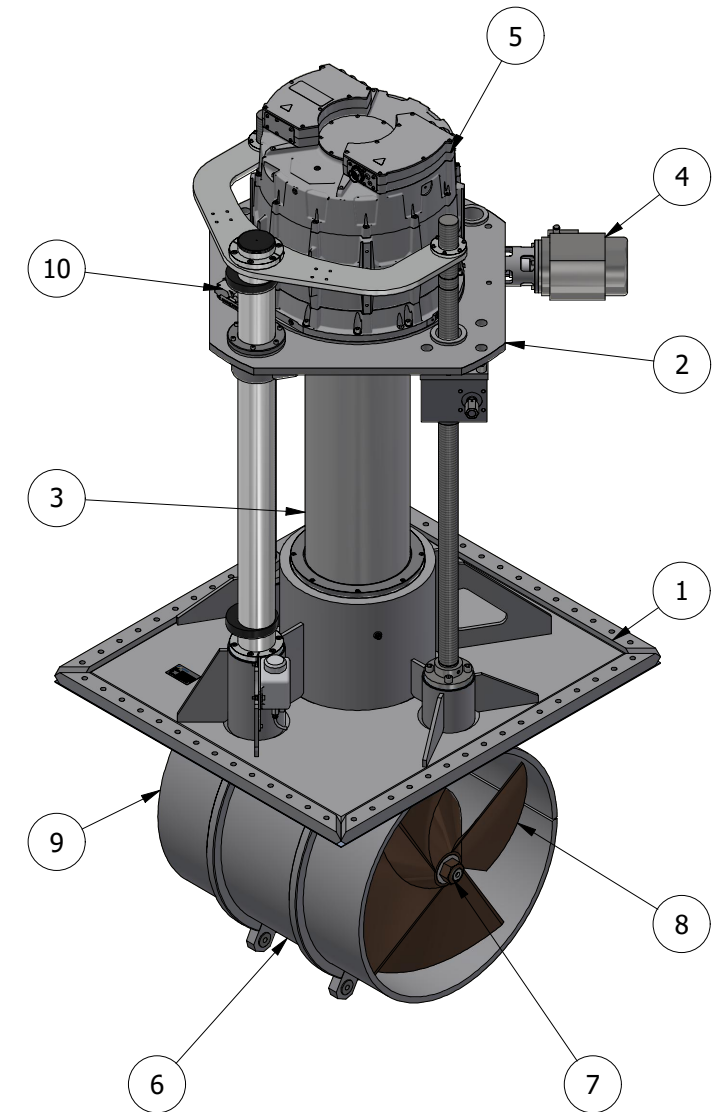
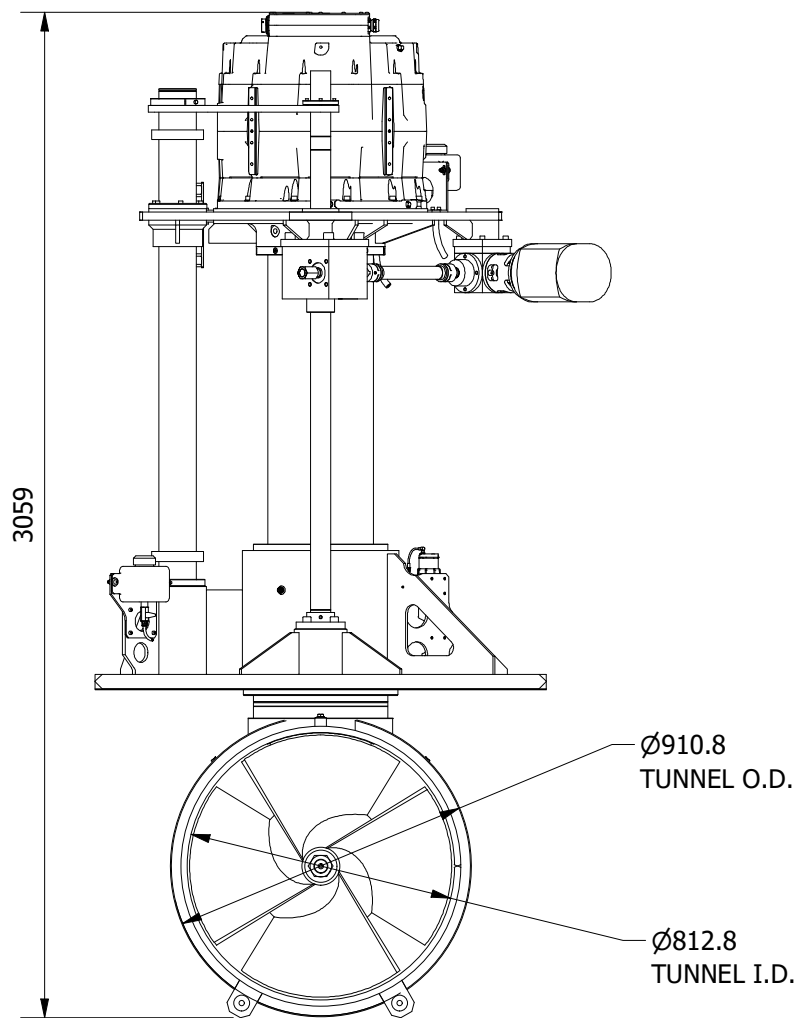
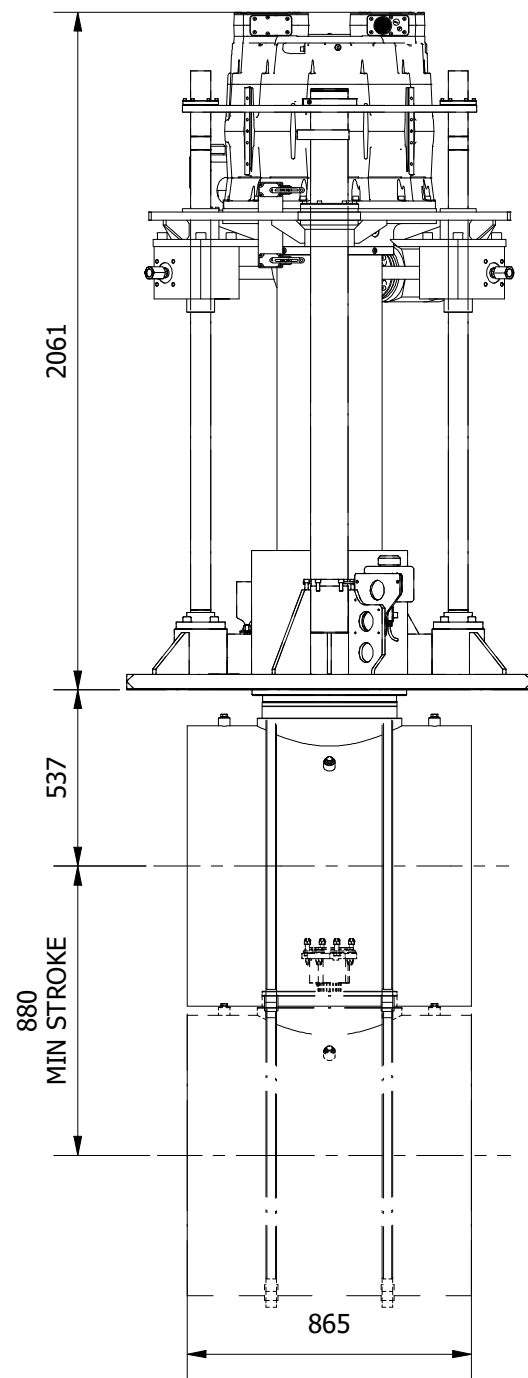
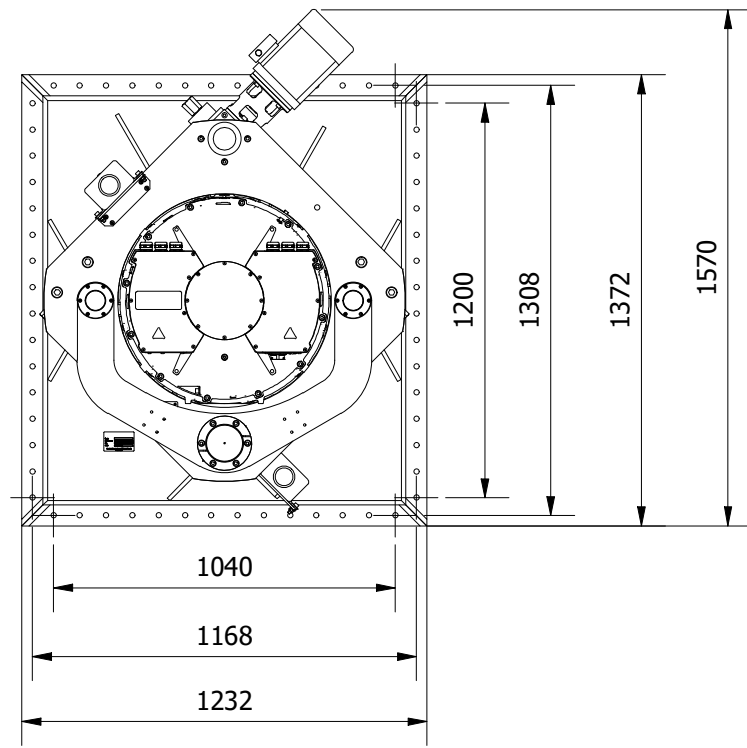


| ITEM | QTY | DESCRIPTION |
|------|-----|------------------------|
| 1 | 1 | MOUNTING BASE ASSEMBLY |
| 2 | 1 | LIFT PLATE ASSEMBLY |
| 3 | 1 | RETRACT TUBE ASSEMBLY |
| 4 | 1 | LIFTING SCREW ASSEMBLY |
| 5 | 1 | MOTOR ASSEMBLY |
| 6 | 1 | TUNNEL ASSEMBLY |
| 7 | 1 | POD ASSEMBLY |
| 8 | 1 | PROPELLER 1 |
| 9 | 1 | PROPELLER 2 |
| 10 | 2 | PROXIMITY SENSOR |

THIS THRUSTER REQUIRES A SUITABLY SIZED LIQUID COOLING SYSTEM FOR THE MAIN DRIVE MOTOR.

| | |
|----------------------|-----------------------------|
| NOMINAL PROP DIA | 813mm |
| POWER RANGE | 194-252 kW (260-338hp) |
| MIN / MAX THRUST | 2328-2772kgf (5154-6111lbf) |
| WEIGHT APPROXIMATELY | 1523 kg (3358lb) |



| | | |
|--|--------------------------|---|
| Title VERTICAL RETRACTING THRUSTER - ELECTRIC | | Revision 1 |
| Drawing No. E-0800-V | Date Drawn 09/11/2021 | By AL |
| Tel: +44 (0)1202 596630 www.oms.ltd | | © Copyright. All rights to this drawing and design are the sole property of OMS Ltd. This drawing must not be copied, communicated or loaned to any third party without the written consent of OMS Ltd. |