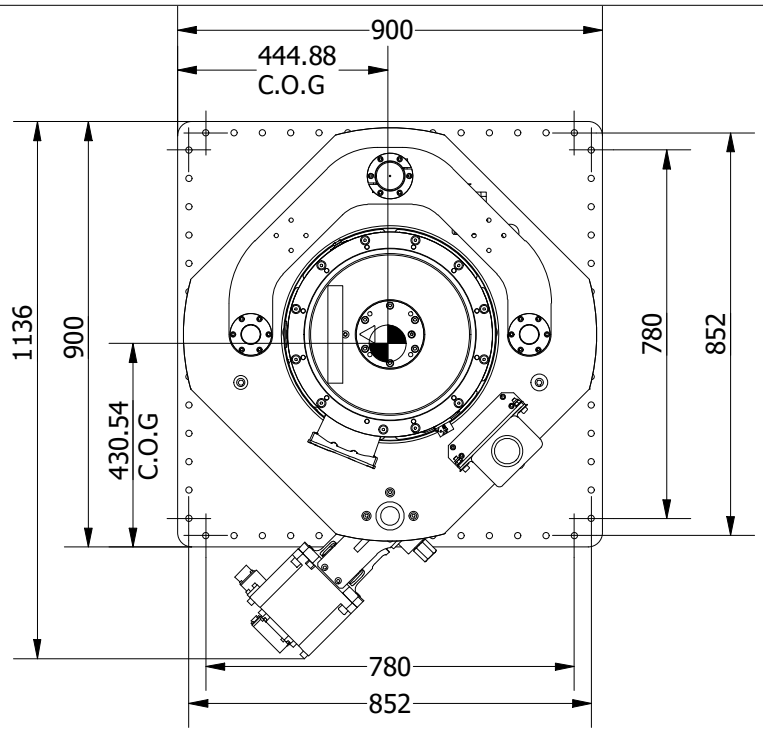
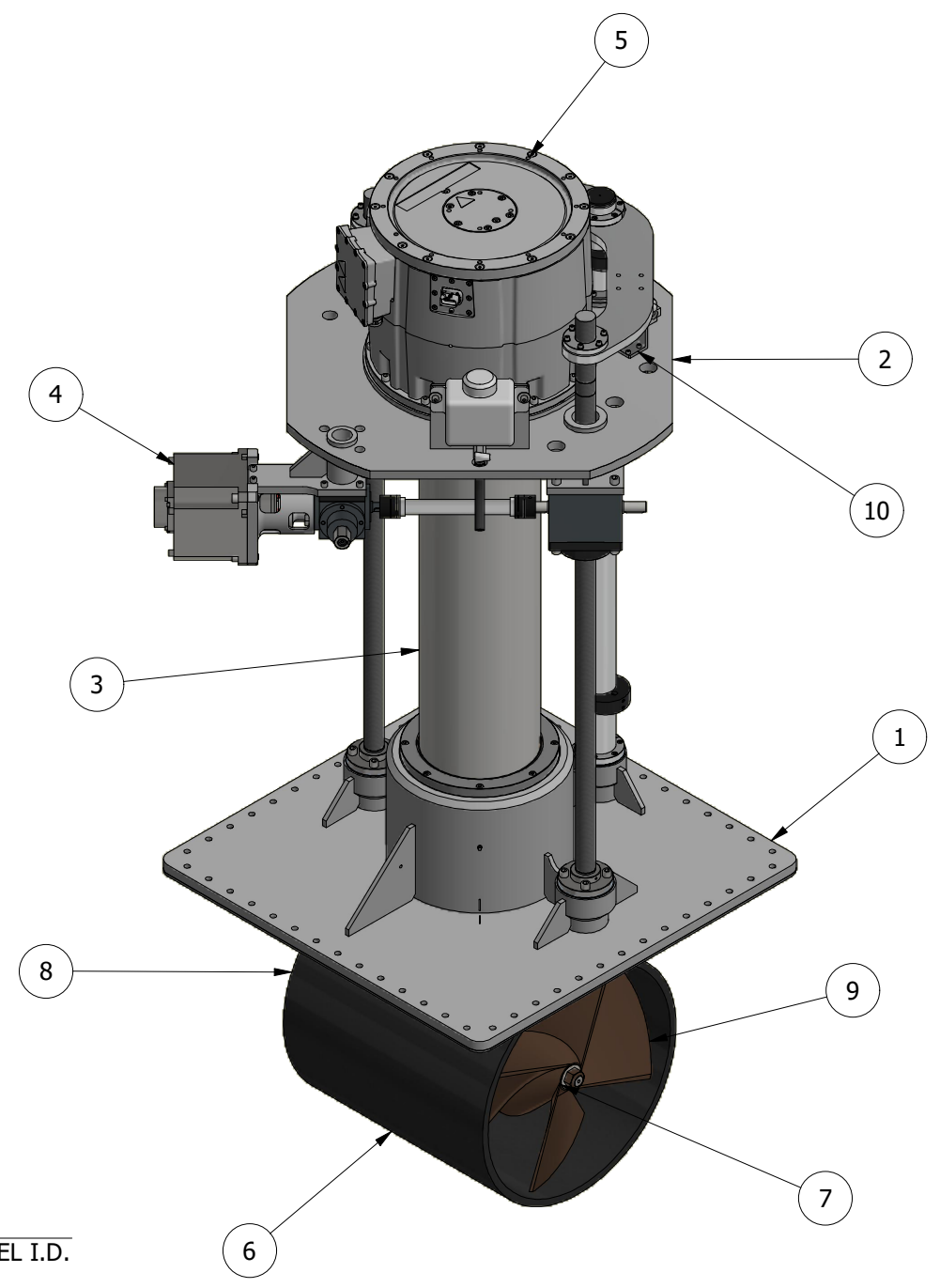
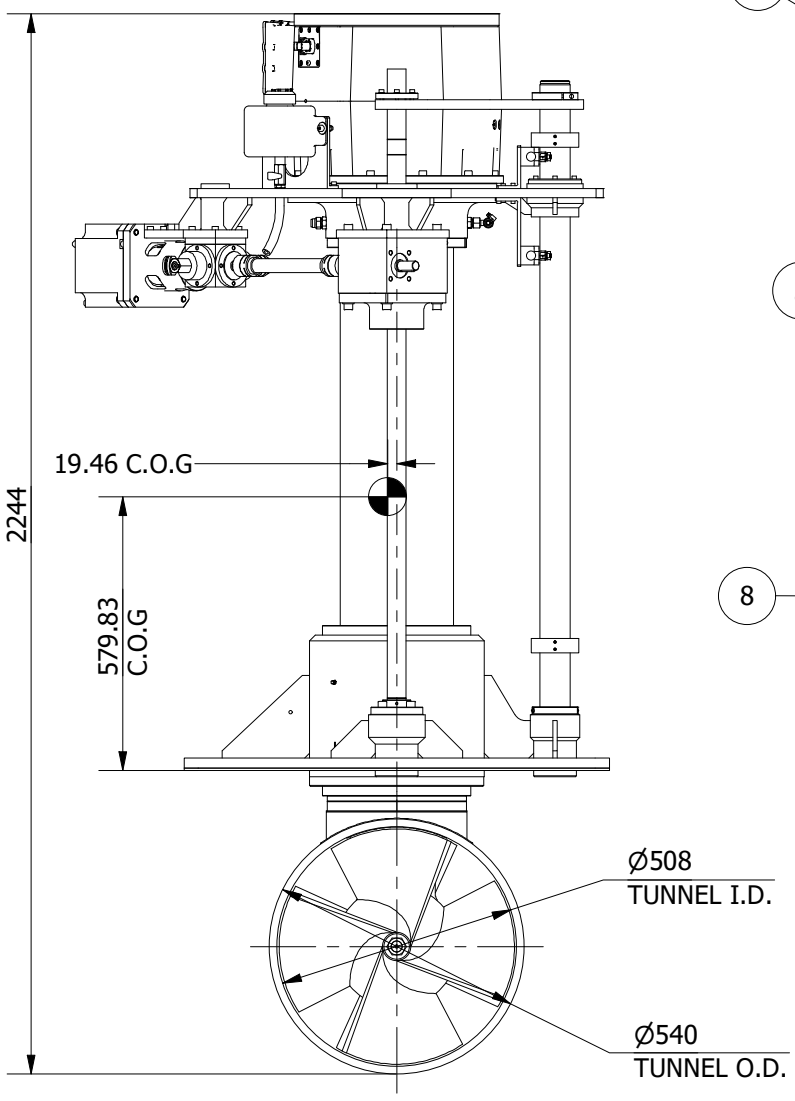
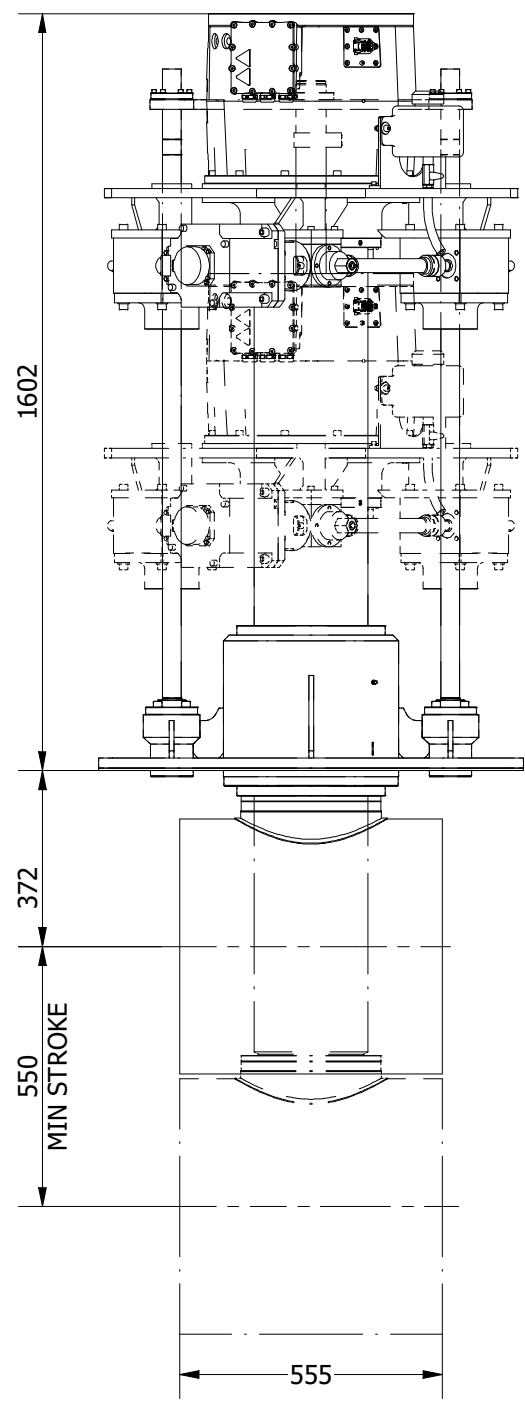


ITEM	QTY	DESCRIPTION
1	1	MOUNTING BASE ASSEMBLY
2	1	LIFT PLATE ASSEMBLY
3	1	RETRACT TUBE ASSEMBLY
4	1	LIFTING SCREW ASSEMBLY
5	1	MOTOR ASSEMBLY
6	1	TUNNEL ASSEMBLY
7	1	POD ASSEMBLY
8	1	PROPELLER 1
9	1	PROPELLER 2
10	2	PROXIMITY SENSOR



THIS THRUSTER REQUIRES A SUITABLY SIZED LIQUID COOLING SYSTEM FOR THE MAIN DRIVE MOTOR.

NOMINAL PROP DIA	500mm
POWER RANGE	63-99 kw (84-133 hp)
MIN / MAX THRUST	756-1188 kgf (1667-2619 lbf)
WEIGHT APPROXIMATELY	720 kg (1587lb)



**OMS**  
Ocean Marine Systems

Title VERTICAL RETRACTING THRUSTER - ELECTRIC		Revision 1
Drawing No. E-0500-V	Date Drawn 05/08/2015	By LR
Tel: +44 (0)1202 596630 www.oms.ltd		© Copyright. All rights to this drawing and design are the sole property of OMS Ltd. This drawing must not be copied, communicated or loaned to any third party without the written consent of OMS Ltd.