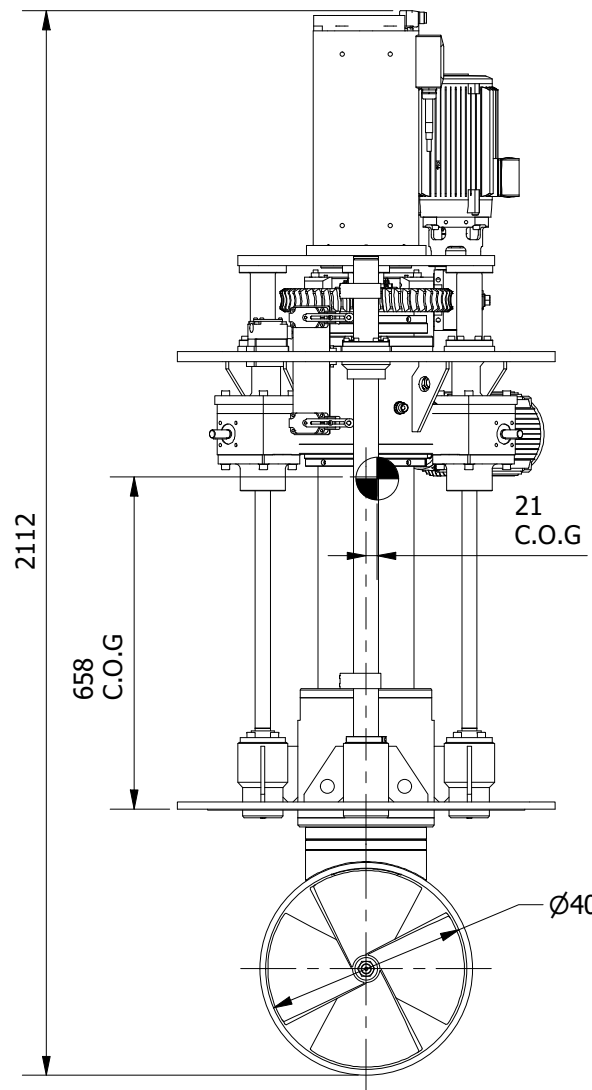
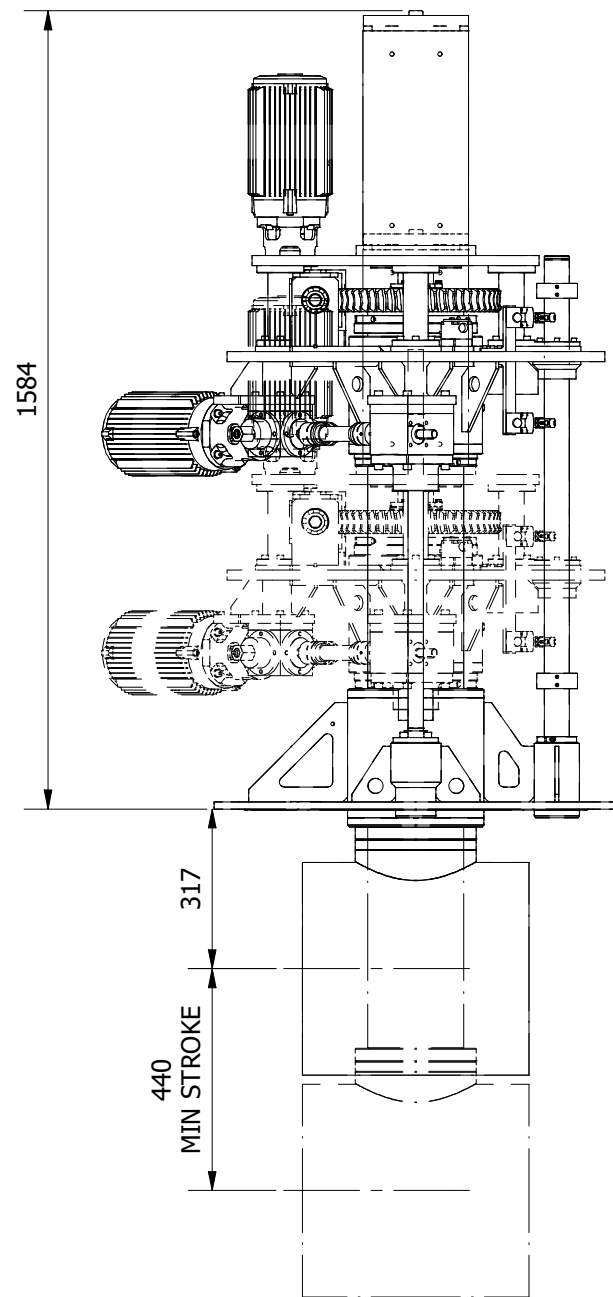
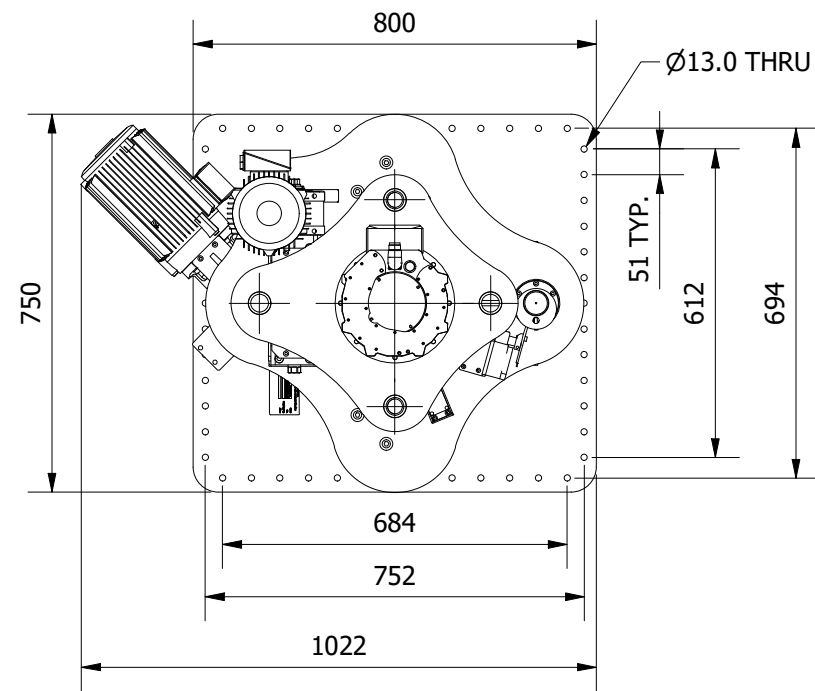
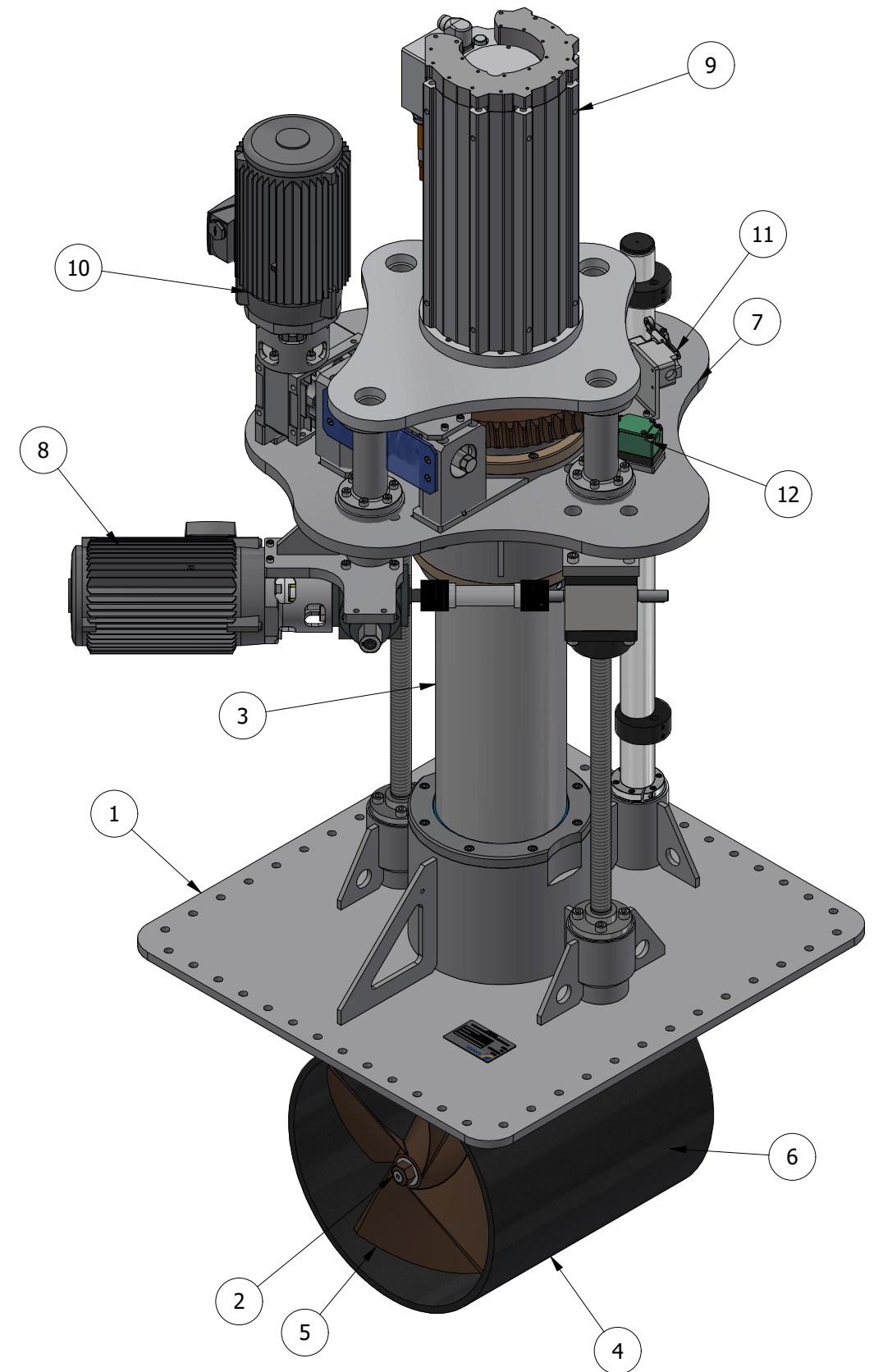


ITEM	DESCRIPTION
1	MOUNTING BASE ASSEMBLY
2	POD ASSEMBLY
3	TUBE ASSEMBLY
4	TUNNEL ASSEMBLY
5	PROPELLER
6	PROPELLER
7	LIFT PLATE ASSEMBLY
8	LIFTING SCREW ASSEMBLY
9	MOTOR DRIVE ASSEMBLY
10	ROTATING DRIVE ASSEMBLY
11	VERTICAL PROXIMITY SENSOR
12	ROTATE PROXIMITY SENSOR



THIS THRUSTER REQUIRES A SUITABLY SIZED LIQUID COOLING SYSTEM FOR THE MAIN DRIVE MOTOR.

NOMINAL PROP DIA	400mm
POWER RANGE	36-63kw (48-85hp)
MIN / MAX THRUST	432-756kgf (952-1667lbf)
WEIGHT APPROXIMATELY	420kg (926lb)



NOTE: ALTERNATIVE MOTOR VOLTAGES AVAILABLE ON REQUEST.



**OMS**  
Ocean Marine Systems

Title ELECTRIC VERTICAL RETRACTING ROTATING THRUSTER		Revision 1
Drawing No. E-0400-V-R		Date Drawn 01/06/2022
Tel: +44 (0)1202 596630 www.oms.ltd		By BG
© Copyright. All rights to this drawing and design are the sole property of OMS Ltd. This drawing must not be copied, communicated or loaned to any third party without the written consent of OMS Ltd.		