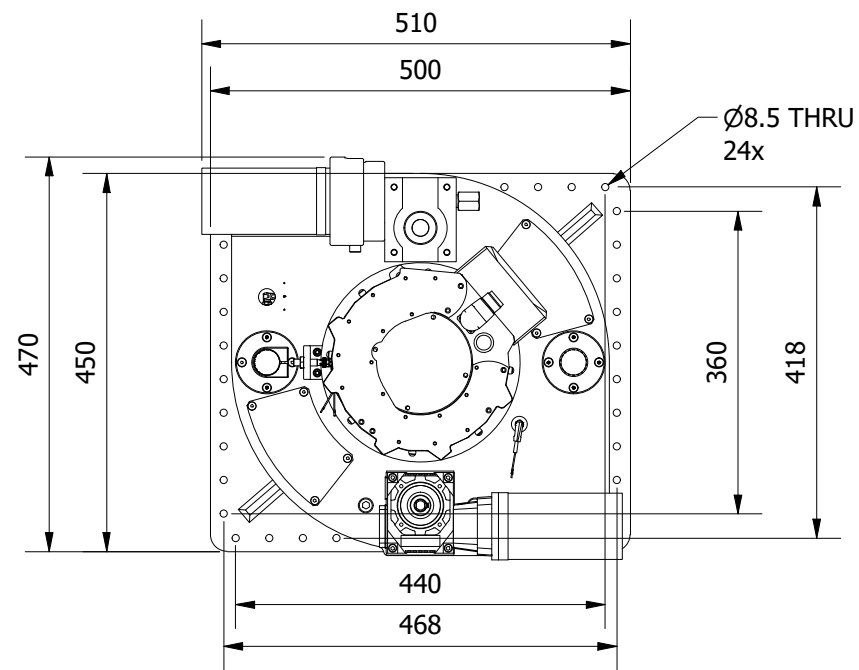
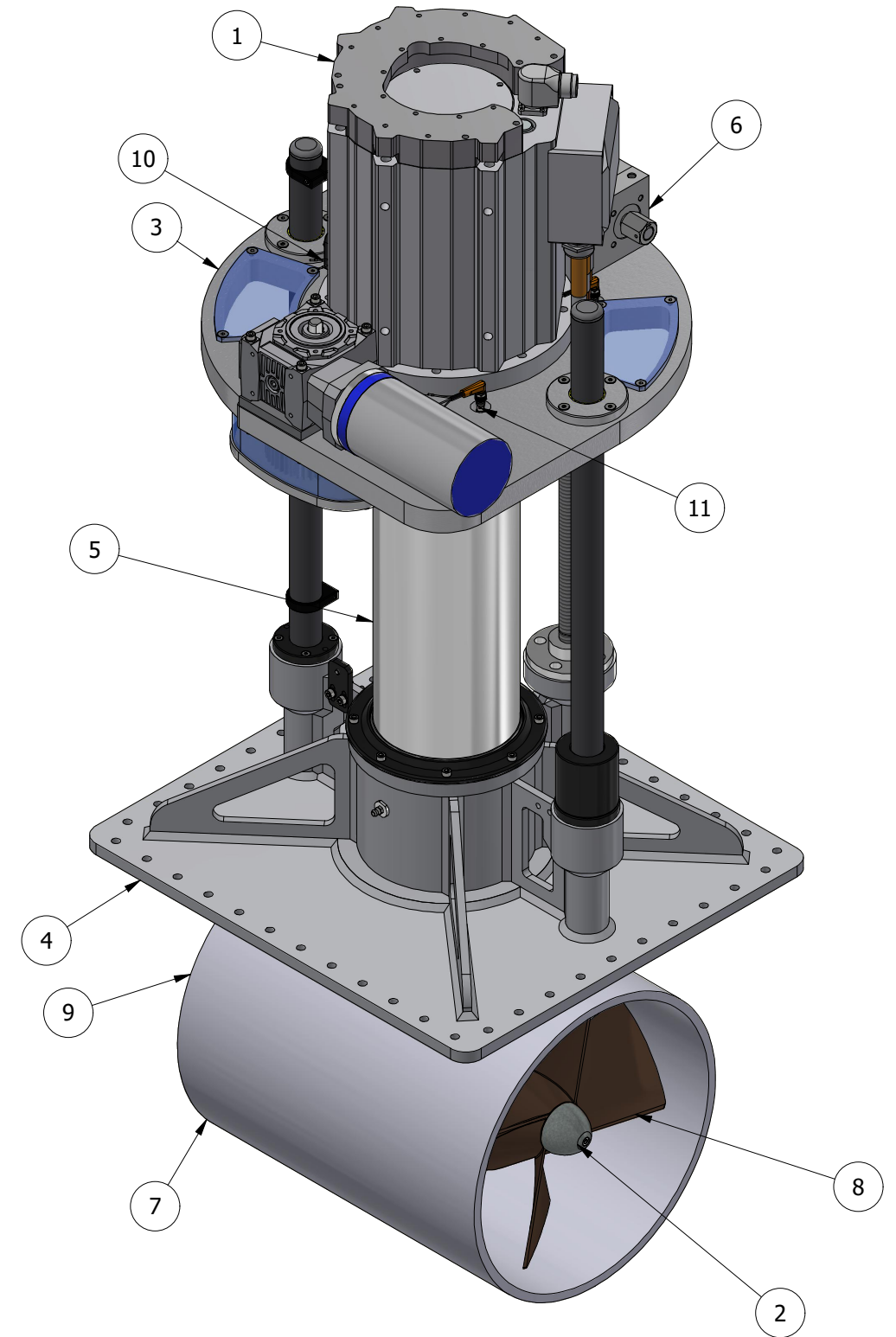
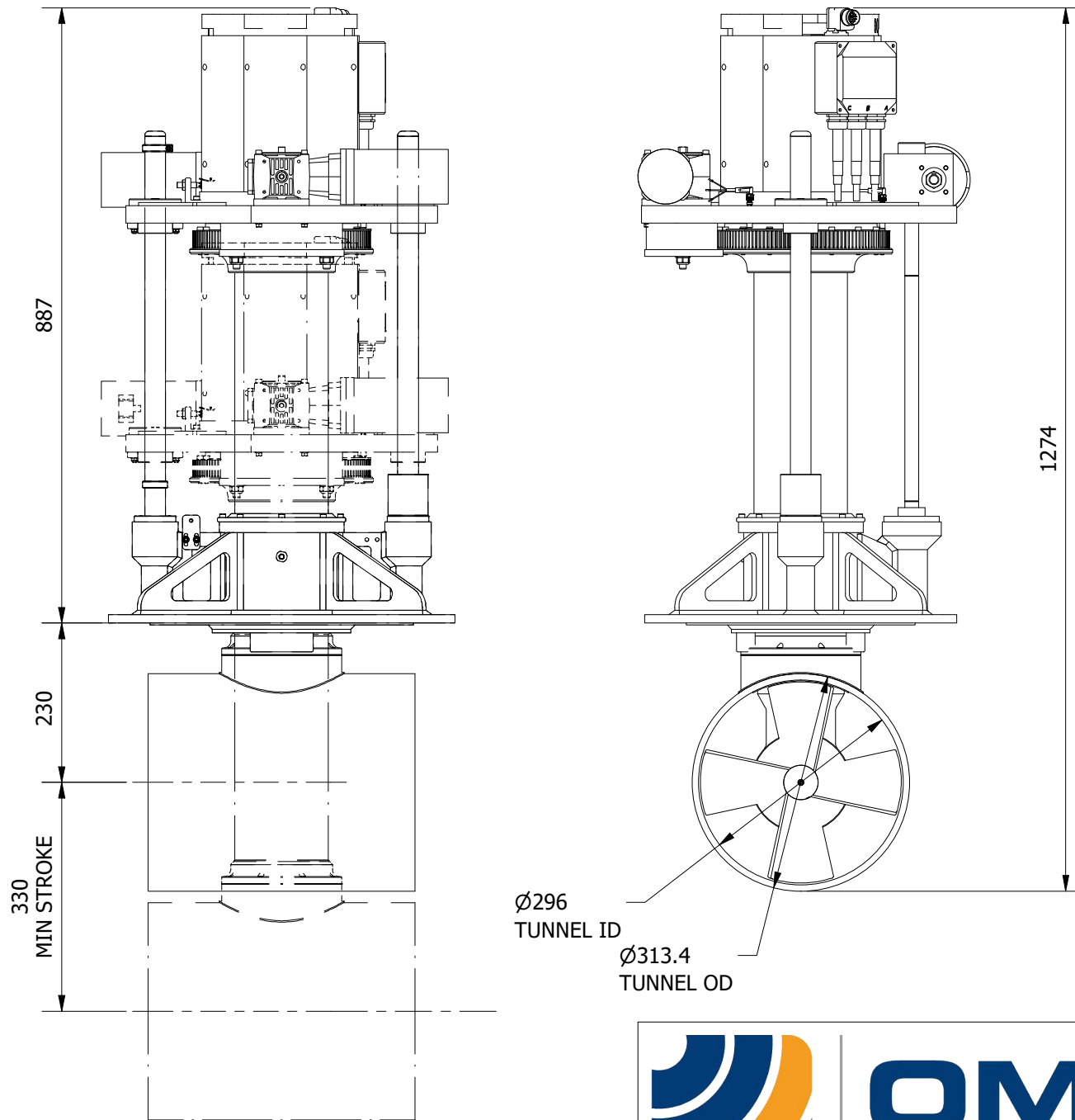


ITEM	DESCRIPTION
1	ELECTRIC DRIVE MOTOR 650 VDC
2	POD ASSEMBLY
3	TOP PLATE ROTATE ASSEMBLY
4	MAIN PLATE ASSEMBLY
5	RETRACT TUBE ASSEMBLY
6	LIFT MOTOR ASSEMBLY
7	TUNNEL ASSEMBLY
8	PROPELLER
9	PROPELLER
10	VERTICAL PROXIMITY SENSOR
11	ROTATE PROXIMITY SENSOR



THIS THRUSTER REQUIRES A SUITABLY SIZED LIQUID COOLING SYSTEM FOR THE MAIN DRIVE MOTOR.

NOMINAL PROP DIA	300mm
POWER RANGE	25-36kw (34-48hp)
MIN / MAX THRUST	300-432kgf (661-952lbf)
WEIGHT APPROXIMATELY	122kg (269lb)



NOTE: ALTERNATIVE MOTOR VOLTAGES AVAILABLE ON REQUEST.



Title ELECTRIC VERTICAL RETRACTING ROTATING THRUSTER		Revision 1
Drawing No. E-0300-V-R		Date Drawn By 05/04/2022 BG
Tel: +44 (0)1202 596630 www.oms.ltd		© Copyright. All rights to this drawing and design are the sole property of OMS Ltd. This drawing must not be copied, communicated or loaned to any third party without the written consent of OMS Ltd.