

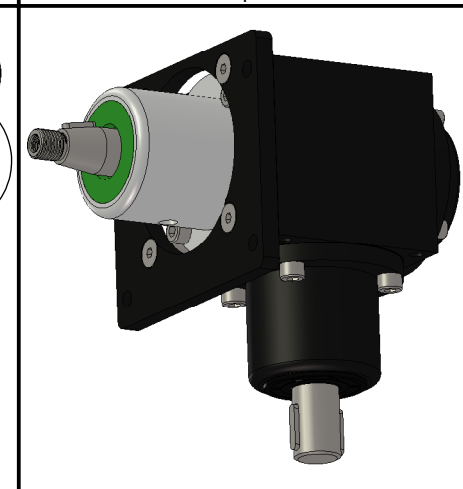
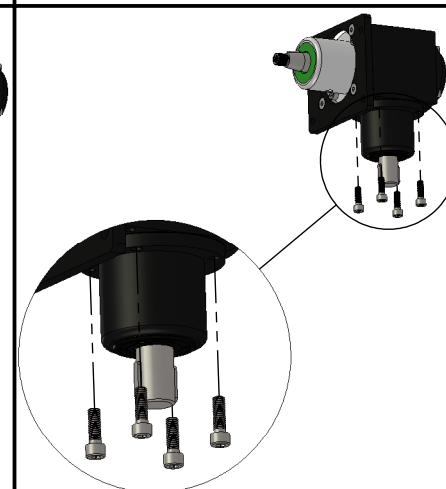
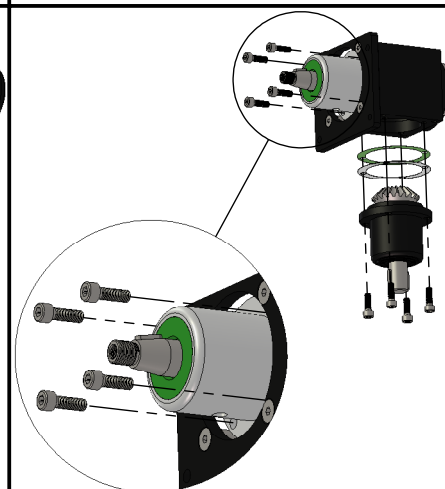
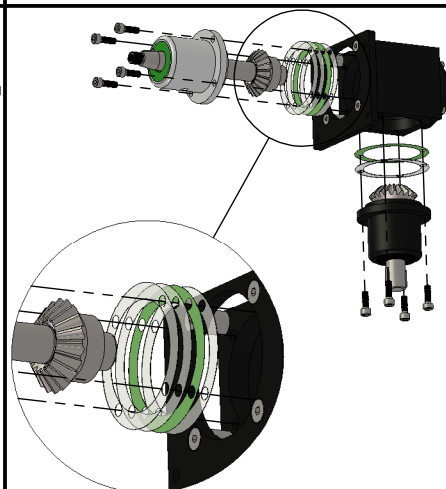
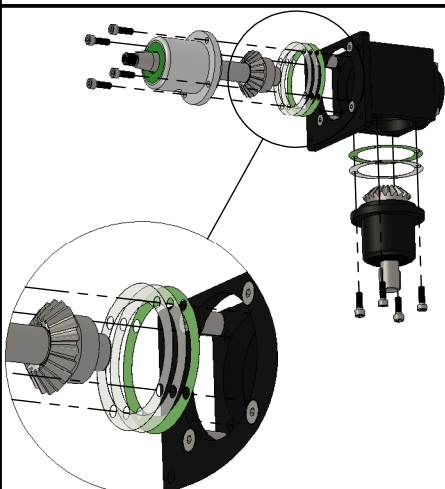
1. To remove play in your reverse bevel gearbox, use one 6mm Allen key to dismount 4pcs of M8x25mm screws from the input socket with a strait shaft.

2. Pull out input socket to reveal the shims between input socket and the box itself.

3. Reduce thickness between input socket and the box by removing only one shim. The shims have different thickness.

4. After removing the necessary shim you are ready to reassemble your bevel gearbox. Put needed shims on input socket and input socket on box. Use 6mm Allen key to mount 4pcs of M8x25mm screws.

5. If you believe your gearbox is okay, go to step 9 for control. If you still have play in your bevel gearbox use the same approach with the second input socket. But you have to remove the first input socket to dismount the second one. Use 6mm Allen key, dismount all 8pcs of screws.



6. Pull out both input sockets to reveal the shims between the second input socket and the box itself.

7. Add thickness between the second input socket and the box, by adding only one shim. The shims have different thickness.

8. Reassemble your bevel gearbox. Put needed shims on the second input socket and put the input socket's on the box. Use 6mm Allen key to mount all 8pcs of M8x25mm screws.

9. If you still have play in your bevel gearbox please go through the manual again from step 1, if the bevel gearbox is too hard then you need to add shim thickness. When you have a good feeling on the bevel gearbox shafts and you are just able to rotate the shaft by hand, then your re-shimming is a success. It's allowed to have a bit toothy feeling when rotating the shaft. Now the maintenance of your bevel gearbox is done.